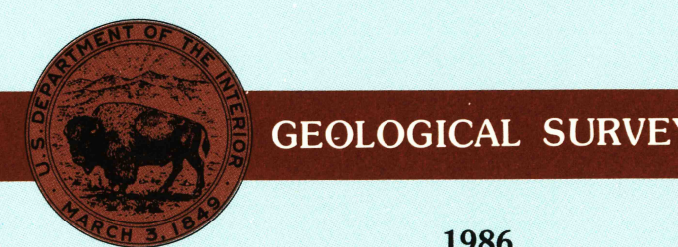


LA MOURE, NORTH DAKOTA

30 X 60 MINUTE SERIES (PLANIMETRIC)

La Moure
NORTH DAKOTA1:100 000-scale
planimetric map30 X 60 MINUTE QUADRANGLE
SHOWING

- Elevations in meters
- Highways, roads and other manmade structures
- Water features
- Woodland areas
- Geographic names



1986

Produced by the United States Geological Survey

Compiled from USGS 1:24 000-scale topographic maps dated 1952-1982. Planimetry revised from aerial photographs taken 1984 and other source data. Revised information not field checked. Map edited 1986.

Projection and 10 000-meter grid, zone 14.

Universal Transverse Mercator

25 000-foot grid ticks based on North Dakota coordinate system, south zone

1927 North American Datum

To place on the predicted North American Datum 1983, move the projection lines 6 meters north and 30 meters east

There may be private inholdings within the boundaries of the National or State reservations shown on this map

NATIONAL GEODETIC VERTICAL DATUM OF 1929
ELEVATIONS SHOWN TO THE NEAREST METER

THIS MAP COMPLIES WITH NATIONAL MAP ACCURACY STANDARDS

| CONVERSION TABLE | | DECLINATION DIAGRAM | | ADJOINING MAPS | | |
|--|---------|--|--|---|---|---|
| Meters | Feet | | | 1 | 2 | 3 |
| 1 | 3.2808 | | | 4 | 5 | |
| 2 | 6.5615 | | | 6 | 7 | 8 |
| 3 | 9.8423 | | | | | |
| 4 | 13.1234 | | | | | |
| 5 | 16.4042 | | | | | |
| 6 | 19.6850 | | | | | |
| 7 | 22.9658 | | | | | |
| 8 | 26.2467 | | | | | |
| 9 | 29.5275 | | | | | |
| 10 | 32.8084 | | | | | |
| To convert meters to feet multiply by 3.2808 | | UTM grid convergence (0°N and 180°N magnetic declination (MN) at center of map. Diagram is approximate | | 1 Steele 2 Jamestown 3 Casselton 4 Wishek 5 Lisbon 6 Eureka 7 Elm River 8 Sisseton | | |
| To convert feet to meters multiply by 0.3048 | | | | | | |

FOR SALE BY U.S. GEOLOGICAL SURVEY
DENVER, COLORADO 80225, OR RESTON, VIRGINIA 22092

USGS NMD HISTORICAL MAP

JUL 09 1986

REC'D FILE COPY

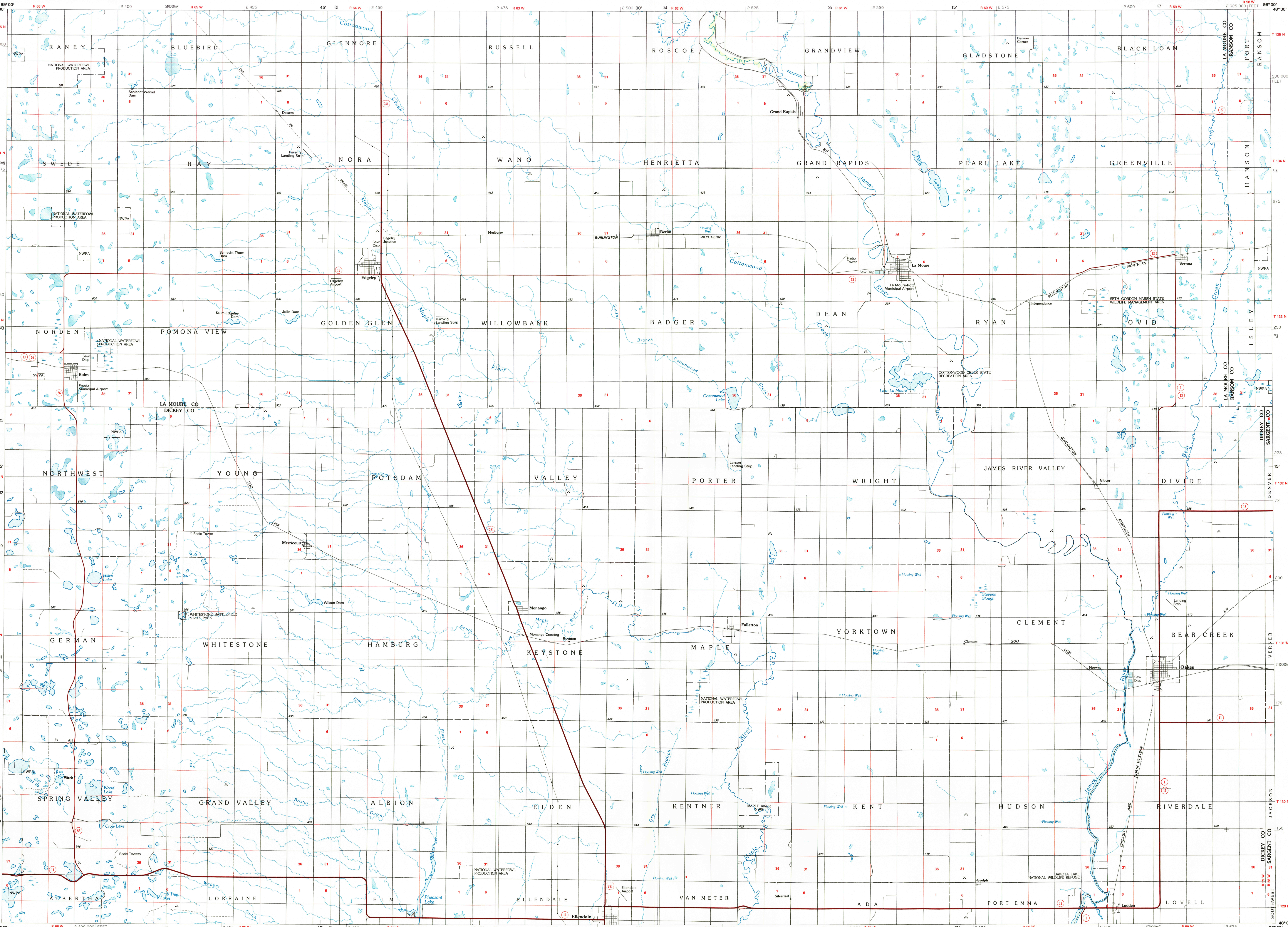
Topographic Map Symbols

| | |
|---|-------|
| Primary highway, hard surface | |
| Secondary highway, hard surface | |
| Light duty road, principal street, hard or improved surface | |
| Other road or street; trail | |
| Route marker: Interstate, U.S. State | |
| Railroad: standard gauge, narrow gauge | |
| Bridge: overpass, underpass | |
| Tunnel: road, railroad | |
| Built up area; locality; elevation | |
| Airport; landing field; landing strip | |
| National boundary | |
| State boundary | |
| County boundary | |
| National or State reservation boundary | |
| Land grant boundary | |
| U.S. public lands survey: range, township, section | |
| Range, township, section line: protracted | |
| Power transmission line: pipeline | |
| Dam; dam with lock | |
| Cemetery; building | |
| Windmill; water well; spring | |
| Mine shaft; adit or cave; mine, quarry; gravel pit | |
| Campground; picnic area; U.S. location monument | |
| Ruins; cliff dwelling | |
| Distorted surface: strip mine, lava, sand | |
| Contours: index; intermediate; supplementary | |
| Bathymetric contours: index; intermediate | |
| Stream, lake: perennial; intermittent | |
| Rapids, large and small; falls, large and small | |
| Area to be submerged; marsh, swamp | |
| Land subject to controlled inundation; woodland | |
| Scrub; mangrove | |
| Orchard; vineyard | |

A pamphlet describing topographic maps is available on request

LA MOURE, NORTH DAKOTA
46098-A1-PL-100

1986



• INTERIOR—GEOLOGICAL SURVEY, RESTON, VIRGINIA—1584