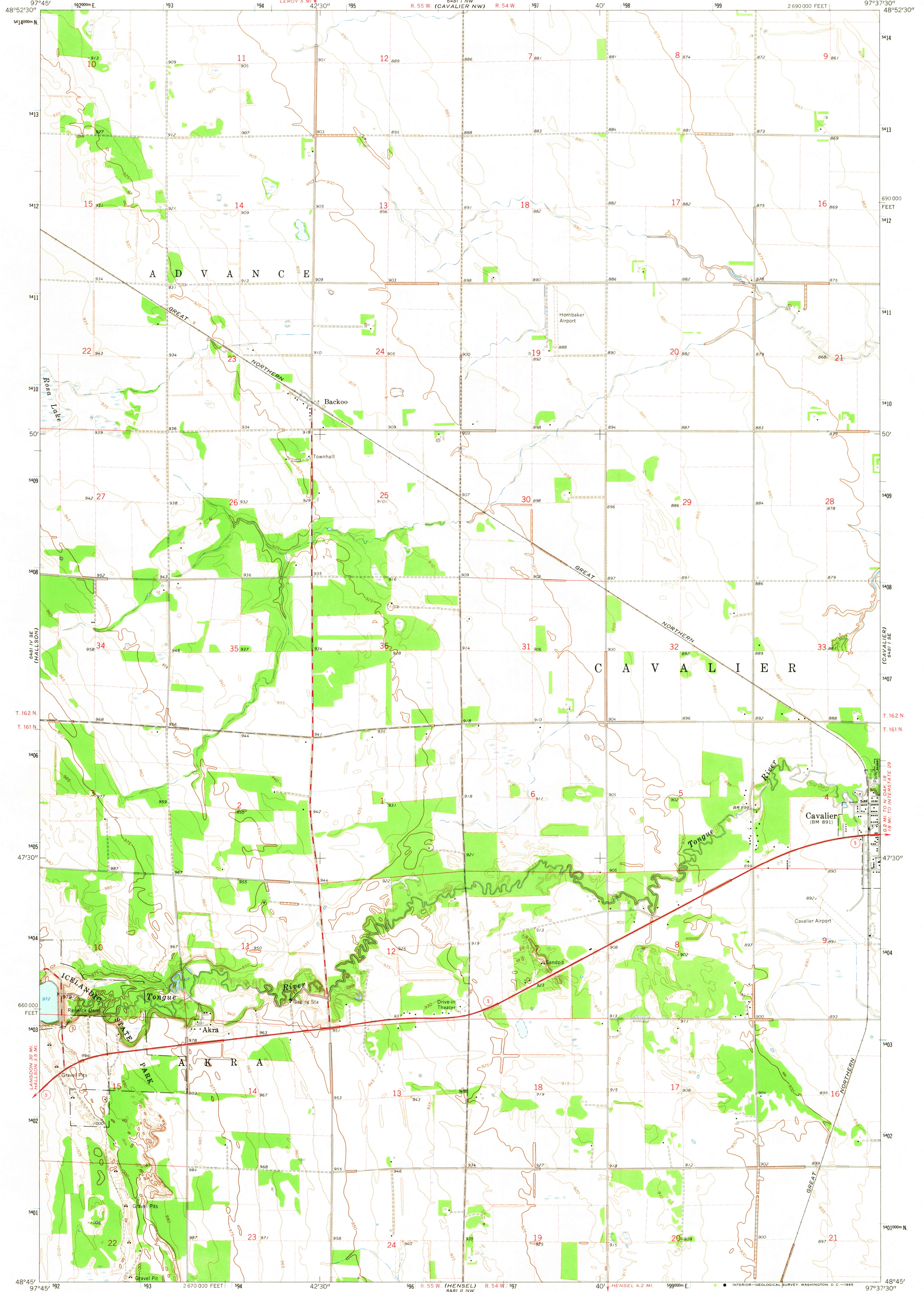


6481 I NW
LEROU 5 MI

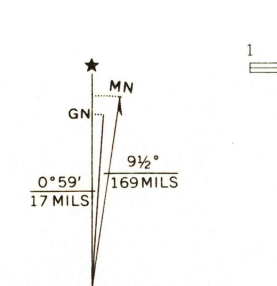
UNITED STATES
DEPARTMENT OF THE INTERIOR
GEOLOGICAL SURVEY

BACKOO QUADRANGLE
NORTH DAKOTA—PEMBINA CO.
7.5 MINUTE SERIES (TOPOGRAPHIC)
SW 1/4 CAVALIER 15' QUADRANGLE

6481 I SE
(CAVALIER)
4.2 MI



Mapped, edited, and published by the Geological Survey as part of the Department of the Interior program for the development of the Missouri River Basin Control by USGS and USC&GS
Planimetry by photogrammetric methods from aerial photographs taken 1963. Topography by planetable surveys 1964
Polyconic projection. 1927 North American datum
10,000-foot grid based on North Dakota coordinate system, north zone
1000-meter Universal Transverse Mercator grid ticks, zone 14, shown in blue
Fine red dashed lines indicate selected fence and field lines where generally visible on aerial photographs. This information is unchecked



SCALE 1:24,000
CONTOUR INTERVAL 5 FEET
DATUM IS MEAN SEA LEVEL
THIS MAP COMPLIES WITH NATIONAL MAP ACCURACY STANDARDS
FOR SALE BY U. S. GEOLOGICAL SURVEY, DENVER, COLORADO 80225 OR WASHINGTON, D. C. 20242
AND BY THE STATE WATER COMMISSION, BISMARCK, NORTH DAKOTA
A FOLDER DESCRIBING TOPOGRAPHIC MAPS AND SYMBOLS IS AVAILABLE ON REQUEST

USGS
Historical File
Topographic Division

ROAD CLASSIFICATION

Heavy-duty	Light-duty
Medium-duty	Unimproved dirt

State Route

BACKOO, N. DAK.
SW 1/4 CAVALIER 15' QUADRANGLE
N4845—W9737.5/7.5
1964
AMS 6481 I SW—SERIES V871

NOV 2 1965
2195
U.S.G.S.
FILE COPY
TOPOGRAPHIC DIVISION