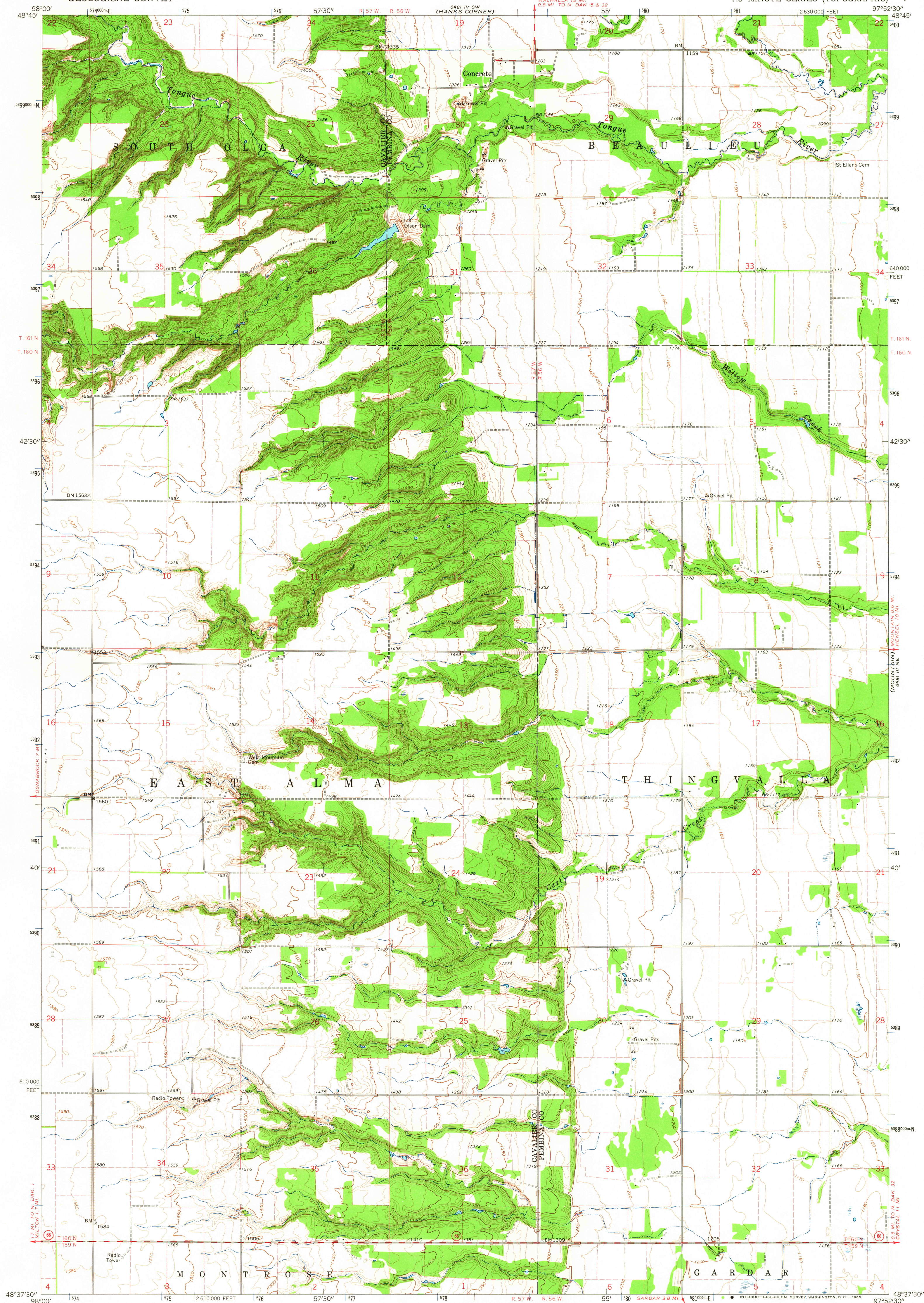


UNITED STATES
DEPARTMENT OF THE INTERIOR
GEOLOGICAL SURVEY

CONCRETE QUADRANGLE
NORTH DAKOTA
7.5 MINUTE SERIES (TOPOGRAPHIC)

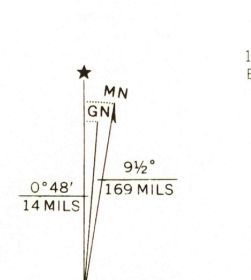


Mapped, edited, and published by the Geological Survey
as part of the Department of the Interior program
for the development of the Missouri River Basin
Control by USGS and USC&GS

Topography by photogrammetric methods from aerial
photographs taken 1963. Field checked 1964

Polyconic projection. 1927 North American datum
10,000-foot grid based on North Dakota coordinate system, north zone
1000-meter Universal Transverse Mercator grid ticks,
zone 14, shown in blue

Fine red dashed lines indicate selected fence and field lines where
generally visible on aerial photographs. This information is unchecked



SCALE 1:24,000
1000 0 1000 2000 3000 4000 5000 6000 7000 FEET
1 0 1 2 3 4 5 6 7 8 9 10 KILOMETER
CONTOUR INTERVAL 10 FEET
DATUM IS MEAN SEA LEVEL

USGS
Historical File
Topographic Division



ROAD CLASSIFICATION
Medium-duty
Unimproved dirt
State Route

CONCRETE, N. DAK.
N4837.5-W9752.5/7.5

1964

AMS 6481 III NW-SERIES V871

U.S.G.S.
FILE COPY
TOPOGRAPHIC DIVISION

NOV 23 1966

2325