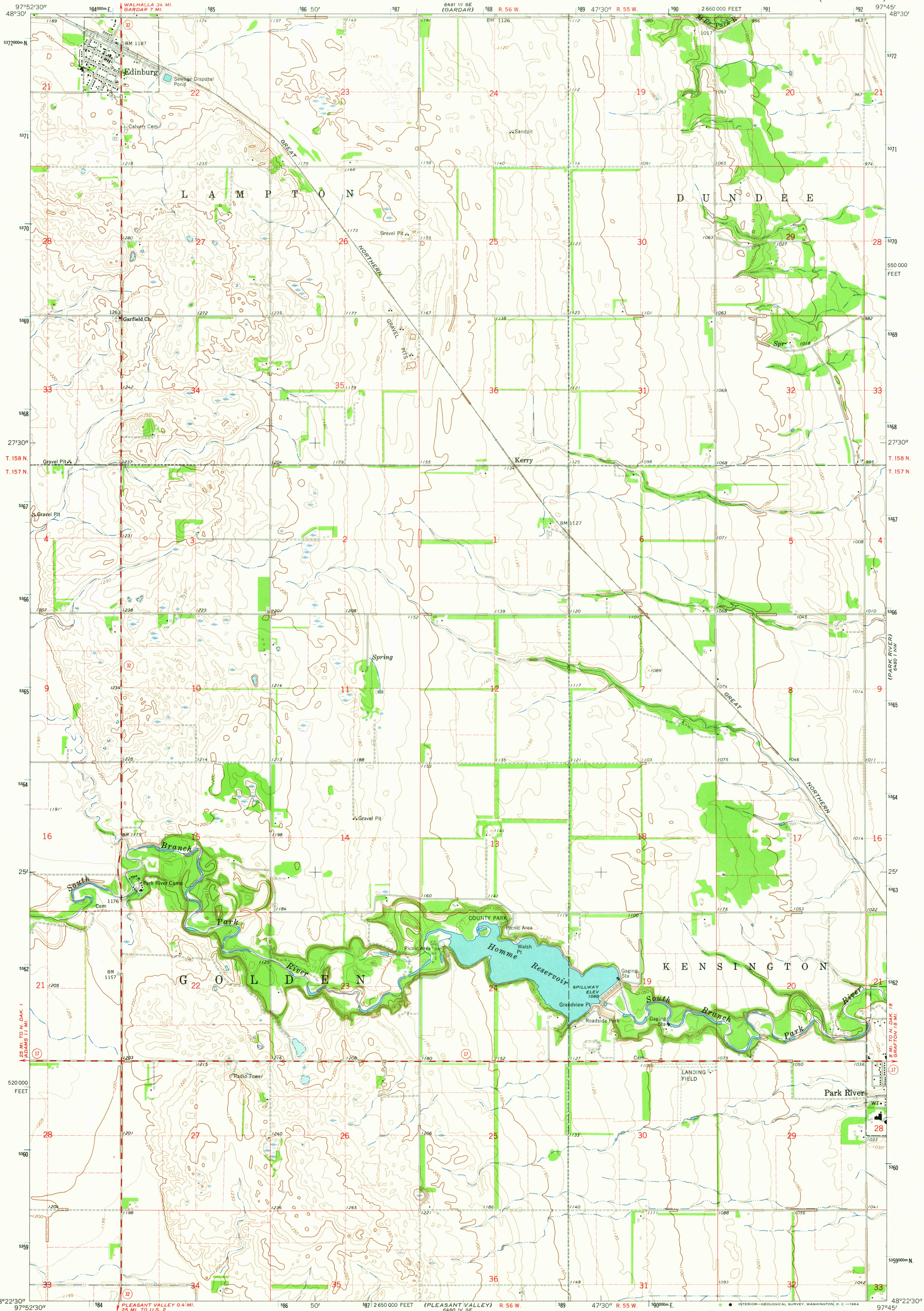


UNITED STATES  
DEPARTMENT OF THE INTERIOR  
GEOLOGICAL SURVEY

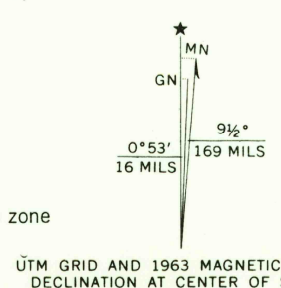
EDINBURG QUADRANGLE  
NORTH DAKOTA—WALSH CO.  
7.5 MINUTE SERIES (TOPOGRAPHIC)



Mapped, edited, and published by the Geological Survey  
as part of the Department of the Interior program  
for the development of the Missouri River Basin  
Control by USGS and USCGS

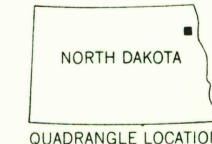
Topography by photogrammetric methods from aerial  
photographs taken 1961. Field checked 1963  
Polyconic projection. 1927 North American datum  
10,000-foot grid based on North Dakota coordinate system, north zone  
1000-meter Universal Transverse Mercator grid ticks,  
zone 14, shown in blue

Fine red dashed lines indicate selected fence and field lines where  
generally visible on aerial photographs. This information is unchecked



SCALE 1:24,000  
1 0 1000 2000 3000 4000 5000 6000 7000 FEET  
1 0 5 10 KILOMETER  
CONTOUR INTERVAL 10 FEET  
DOTTED LINES REPRESENT 5-FOOT CONTOURS  
DATUM IS MEAN SEA LEVEL

USGS  
Historical File  
Topographic Division  
ROAD CLASSIFICATION  
Medium-duty Light-duty  
Unimproved dirt  
State Route



THIS MAP COMPLIES WITH NATIONAL MAP ACCURACY STANDARDS  
FOR SALE BY U.S. GEOLOGICAL SURVEY, DENVER 25, COLORADO OR WASHINGTON 25, D. C.  
AND BY THE STATE WATER COMMISSION, BISMARCK, NORTH DAKOTA  
A FOLDER DESCRIBING TOPOGRAPHIC MAPS AND SYMBOLS IS AVAILABLE ON REQUEST

EDINBURG, N. DAK.  
N4822.5—W9745.7.5

1963

AMS 6480 IV NE—SERIES V87 I

U.S.G.S.  
FILE COPY  
TOPOGRAPHIC DIVISION  
NOV 24 1964

2200