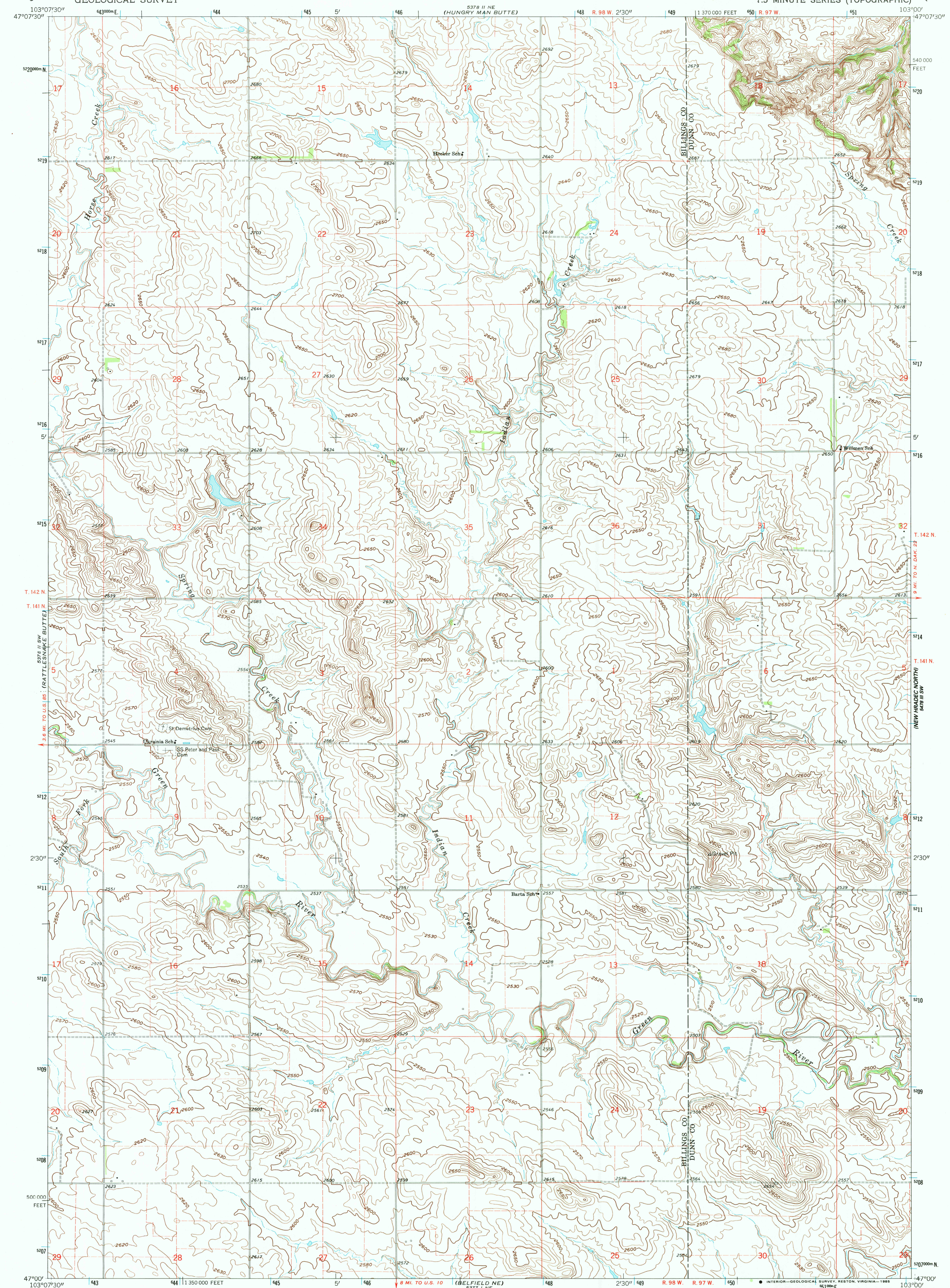


(5378 II NW)
(FAIRFIELD)

UNITED STATES
DEPARTMENT OF THE INTERIOR
GEOLOGICAL SURVEY

FAIRFIELD SE QUADRANGLE
NORTH DAKOTA
7.5 MINUTE SERIES (TOPOGRAPHIC)

(5478 II NW)
(MANNING NW)



Mapped, edited, and published by the Geological Survey
Control by USGS and USC&GS
Topography by photogrammetric methods from aerial
photographs taken 1961. Field checked 1963
Polyconic projection. 1927 North American datum
10,000-foot grid based on North Dakota coordinate system, south zone
1000-meter Universal Transverse Mercator grid ticks,
zone 13, shown in blue
To place on the predicted North American Datum 1983,
move the projection lines 4 meters north and
38 meters east as shown by dashed corner ticks
Find red dashed lines indicate selected fence and field lines where
generally visible on aerial photographs. This information is unchecked
Map photoinspected 1978
No major culture or drainage changes observed

SCALE 1:24,000
1"=25' 14" 249 MILES
1"=25' 14" 249 MILES
UTM GRID AND 1963 MAGNETIC NORTH
DECLINATION AT CENTER OF SHEET
THIS MAP COMPLIES WITH NATIONAL MAP ACCURACY STANDARDS
FOR SALE BY U. S. GEOLOGICAL SURVEY, DENVER, COLORADO 80225, OR RESTON, VIRGINIA 22092
AND NORTH DAKOTA WATER COMMISSION, BISMARCK, NORTH DAKOTA 58501
A FOLDER DESCRIBING TOPOGRAPHIC MAPS AND SYMBOLS IS AVAILABLE ON REQUEST

ROAD CLASSIFICATION
Light-duty Unimproved dirt
NORTH DAKOTA
QUADRANGLE LOCATION
FAIRFIELD SE, N. DAK.
47103-A1-TF-024
1963
PHOTOINSPECTED 1978
DMA 5378 II SE--SERIES V871

RETURN TO:
USGS AND HISTORICAL MAP ARCHIVES