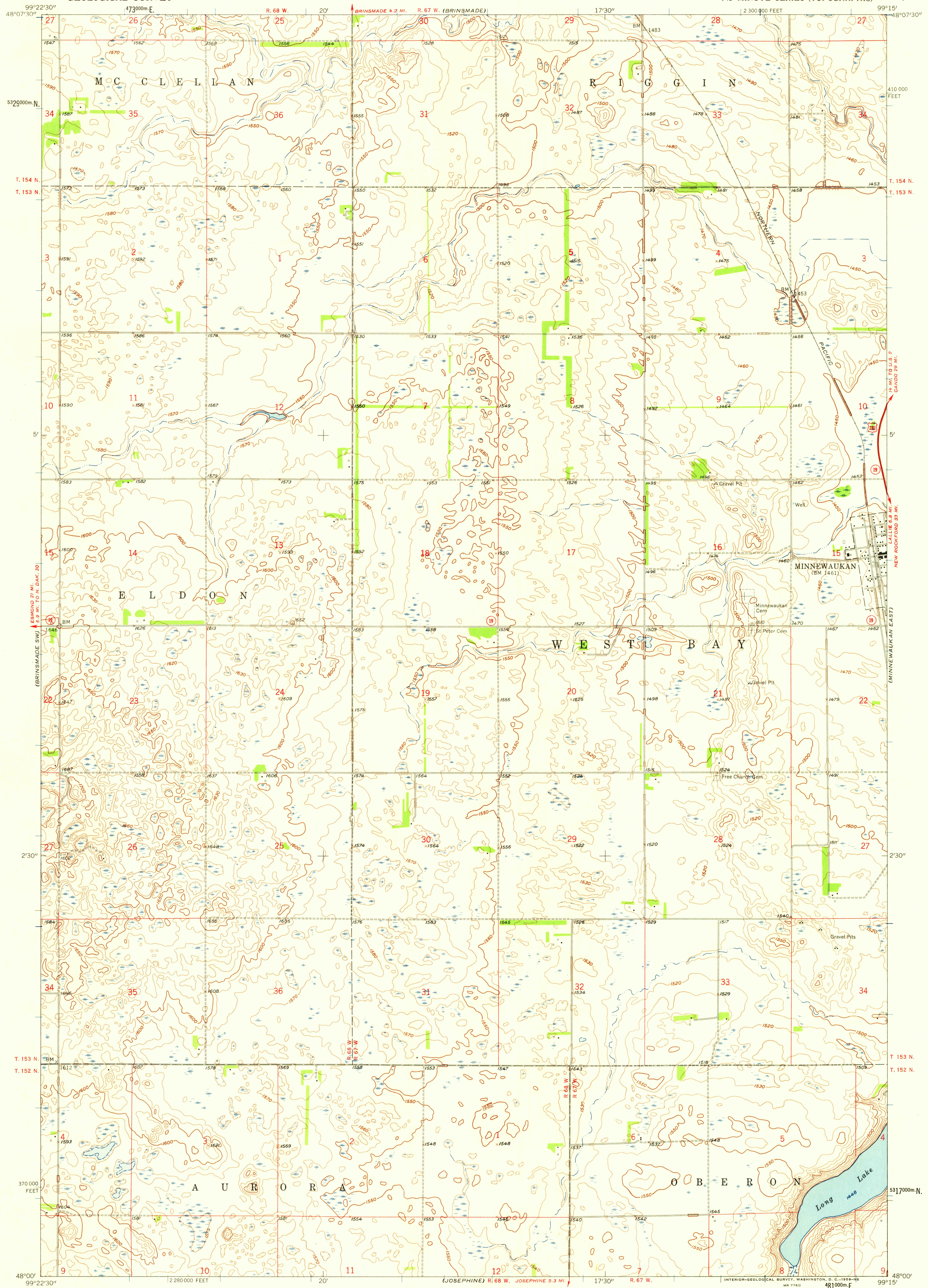


(COMSTOCK)

UNITED STATES
DEPARTMENT OF THE INTERIOR
GEOLOGICAL SURVEY

MINNEWAUKAN WEST QUADRANGLE
NORTH DAKOTA-BENSON CO.
7.5 MINUTE SERIES (TOPOGRAPHIC)

(TILDEN)



Maped, edited, and published by the Geological Survey
as part of the Department of the Interior program
for the development of the Missouri River Basin
Control by USGS and USC&GS

Topography from aerial photographs by photogrammetric methods
and by planetable surveys 1958. Aerial photographs taken 1956

Polyconic projection. 1927 North American datum
10,000-foot grid based on North Dakota coordinate system,
north zone

1000-meter Universal Transverse Mercator grid ticks,
zone 14, shown in blue

TRUE NORTH
MAGNETIC NORTH
APPROXIMATE MEAN
DECLINATION, 1958

SCALE 1:24,000
1 1000 0 1000 2000 3000 4000 5000 6000 7000 FEET
1 5 0 1 KILOMETER
CONTOUR INTERVAL 10 FEET
DATUM IS MEAN SEA LEVEL

THIS MAP COMPLIES WITH NATIONAL MAP ACCURACY STANDARDS
FOR SALE BY U. S. GEOLOGICAL SURVEY, DENVER 25, COLORADO OR WASHINGTON 25, D. C.
AND BY THE STATE WATER CONSERVATION COMMISSION, BISMARCK, NORTH DAKOTA
A FOLDER DESCRIBING TOPOGRAPHIC MAPS AND SYMBOLS IS AVAILABLE ON REQUEST

USGS
Historical File
Topographic Division
NORTH DAKOTA
QUADRANGLE LOCATION

ROAD CLASSIFICATION
Heavy-duty — Light-duty
Unimproved dirt —
U. S. Route — State Route

MINNEWAUKAN WEST, N. DAK.
N 4800—W 9915/7.5

1958

U.S.G.S.
FILE COPY
TOPOGRAPHIC DIVISION

SEP - 3 1959

2280