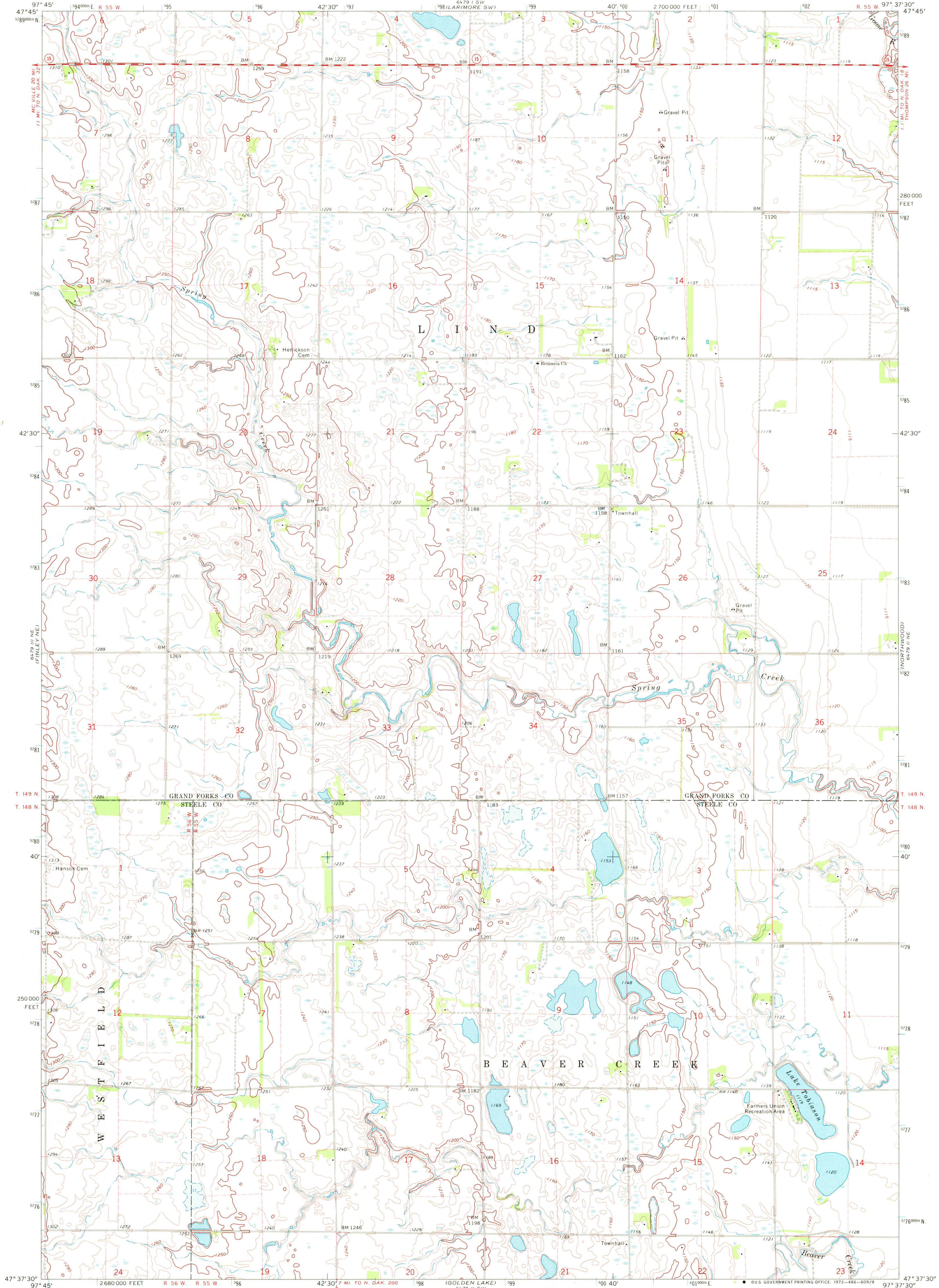


UNITED STATES  
DEPARTMENT OF THE INTERIOR  
GEOLOGICAL SURVEY

NORTHWOOD NW QUADRANGLE  
NORTH DAKOTA  
7.5 MINUTE SERIES (TOPOGRAPHIC)



Mapped, edited, and published by the Geological Survey

Control by USGS and USC&GS

Topography by photogrammetric methods from aerial

photographs taken 1965. Field checked 1970.

Polyconic projection. 1927 North American datum

10,000-foot grid based on North Dakota coordinate system, north zone

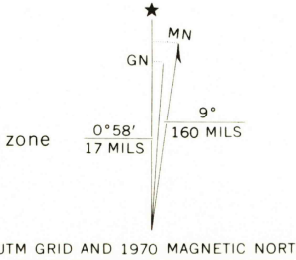
1000-meter Universal Transverse Mercator grid ticks,

zone 14, shown in blue

Fine red dashed lines indicate selected fence and field lines where

generally visible on aerial photographs

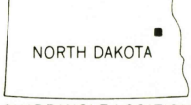
This information is unchecked



CONTOUR INTERVAL 10 FEET  
DOTTED LINES REPRESENT 5-FOOT CONTOURS  
DATUM IS MEAN SEA LEVEL

FOR SALE BY U.S. GEOLOGICAL SURVEY, DENVER, COLORADO 80225, OR WASHINGTON, D. C. 20242  
AND BY THE STATE WATER COMMISSION, BISMARCK, NORTH DAKOTA 58501  
A FOLDER DESCRIBING TOPOGRAPHIC MAPS AND SYMBOLS IS AVAILABLE ON REQUEST

ROAD CLASSIFICATION  
Secondary highway, all weather. Light-duty road, all weather,  
hard surface. Improved surface.  
Unimproved road, fair or dry  
weather.  
State Route



NORTHWOOD NW, N. DAK.  
N4737.5—W9737.5/7.5

1970

AMS 6479 II NW—SERIES V871

W4H.  
2500  
Sopani  
JAN 8 0 1973