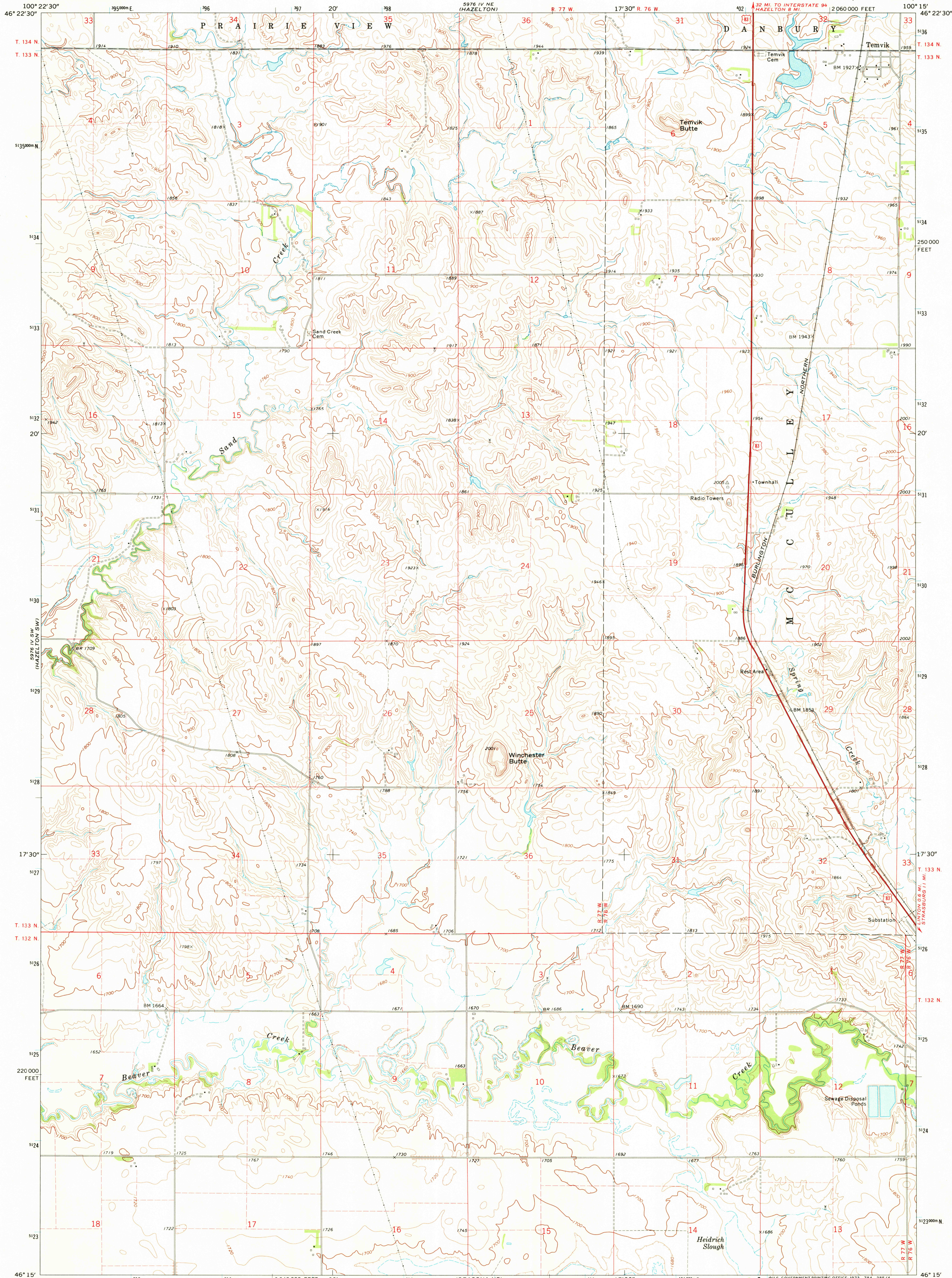


UNITED STATES
DEPARTMENT OF THE INTERIOR
GEOLOGICAL SURVEY

TEMIK QUADRANGLE
NORTH DAKOTA—EMMONS CO.
7.5 MINUTE SERIES (TOPOGRAPHIC)



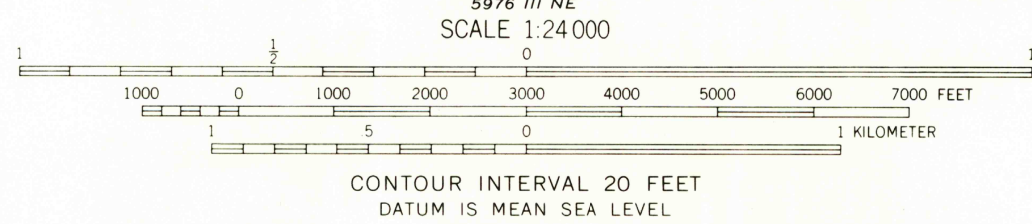
Mapped, edited, and published by the Geological Survey

Control by USGS and USC&GS

Topography by photogrammetric methods from aerial
photographs taken 1969. Field checked 1971

Polyconic projection. 1927 North American datum
10,000-foot grid based on North Dakota coordinate system,
south zone
1000-meter Universal Transverse Mercator grid ticks,
zone 14, shown in blue

Fine red dashed lines indicate selected fence and field lines
where generally visible on aerial photographs
This information is unchecked



ROAD CLASSIFICATION
Primary highway, hard surface
Secondary highway, hard surface
Unimproved road
Interstate Route
U. S. Route
State Route



13 AUG 1971
TEMIK, N. DAK.
N4615-W10015/7.5
1971

AMS 5976 IV SE—SERIES V871