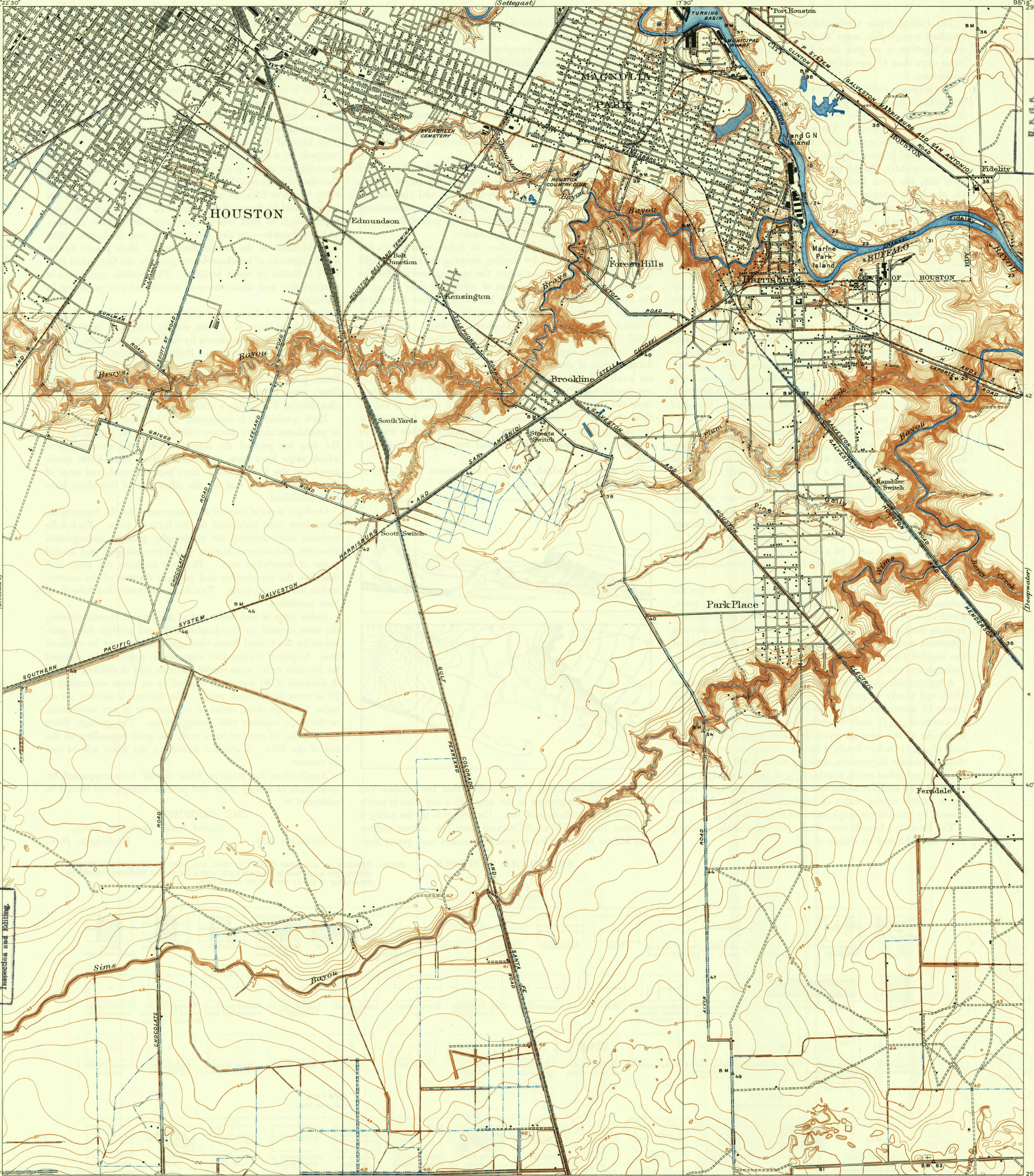


U.S.G.S.
FILE COPY
Inspection and Editing.

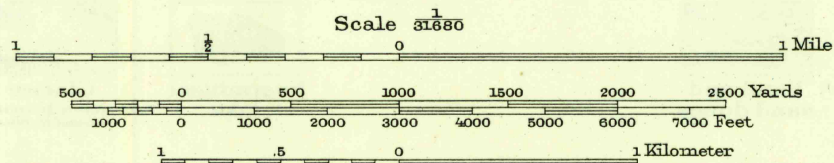


U.S.G.S.
FILE COPY
Inspection and Editing.

R.B. Marshall, Chief Geographer.
Sledge Tatum, Geographer in charge.
Topography by C.H. Birdseye and E.R. Bartlett, and O.G. Taylor.
Control by U.S. Coast and Geodetic Survey.
E.L. McNair and R.R. Monbeck.
Surveyed in 1915.

SURVEYED IN COOPERATION WITH HARRIS COUNTY.

Taylor
Birdseye
Bartlett



Contour interval 1 foot, changing to 5 feet in Houston City.
Datum is mean sea level.

TRUE NORTH
MAGNETIC NORTH
APPROXIMATE MEAN
DECLINATION, 1915

Polyconic projection, North American datum.

U.S.G.S.
FILE COPY
Inspection and Editing.

TEX.
PARK PLACE
Edition of 1922.
reprinted 1949
N2937.5-W9515/7.5

USGS Library
Reston, VA.
Topo Archive