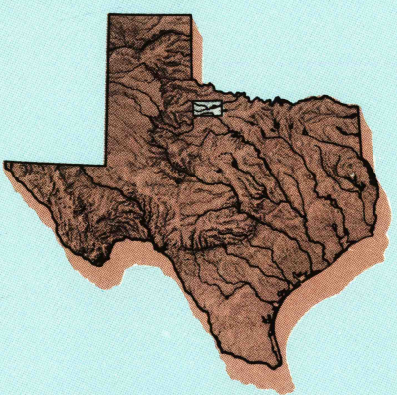


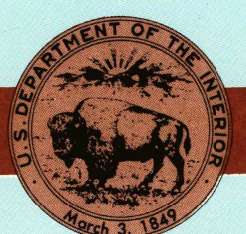
Lake Kemp
TEXAS

1:100 000-scale metric
topographic map



30 X 60 MINUTE QUADRANGLE
SHOWING

- Contours and elevations in meters
- Highways, roads and other manmade structures
- Water features
- Woodland areas
- Geographic names



GEOLOGICAL SURVEY

1985/94

Produced by the United States Geological Survey

Compiled from USGS 1:24 000-scale topographic maps dated 1966-1981. Planimetry revised from aerial photographs taken 1983 and other source data. Revised information not field checked. Map edited 1985

North American Datum of 1927 (NAD 27). Projection and 10 000-meter grid: Universal Transverse Mercator, zone 14. 25 000-foot ticks: Texas coordinate system north central zone. The values of the shift between NAD 27 and North American Datum of 1983 (NAD 83) for 7.5-minute intersections are obtainable from National Geodetic Survey NADCON software

CONTOUR INTERVAL 10 METERS
NATIONAL GEODETIC VERTICAL DATUM OF 1929
ELEVATIONS SHOWN TO THE NEAREST METER

THIS MAP COMPLIES WITH NATIONAL MAP ACCURACY STANDARDS

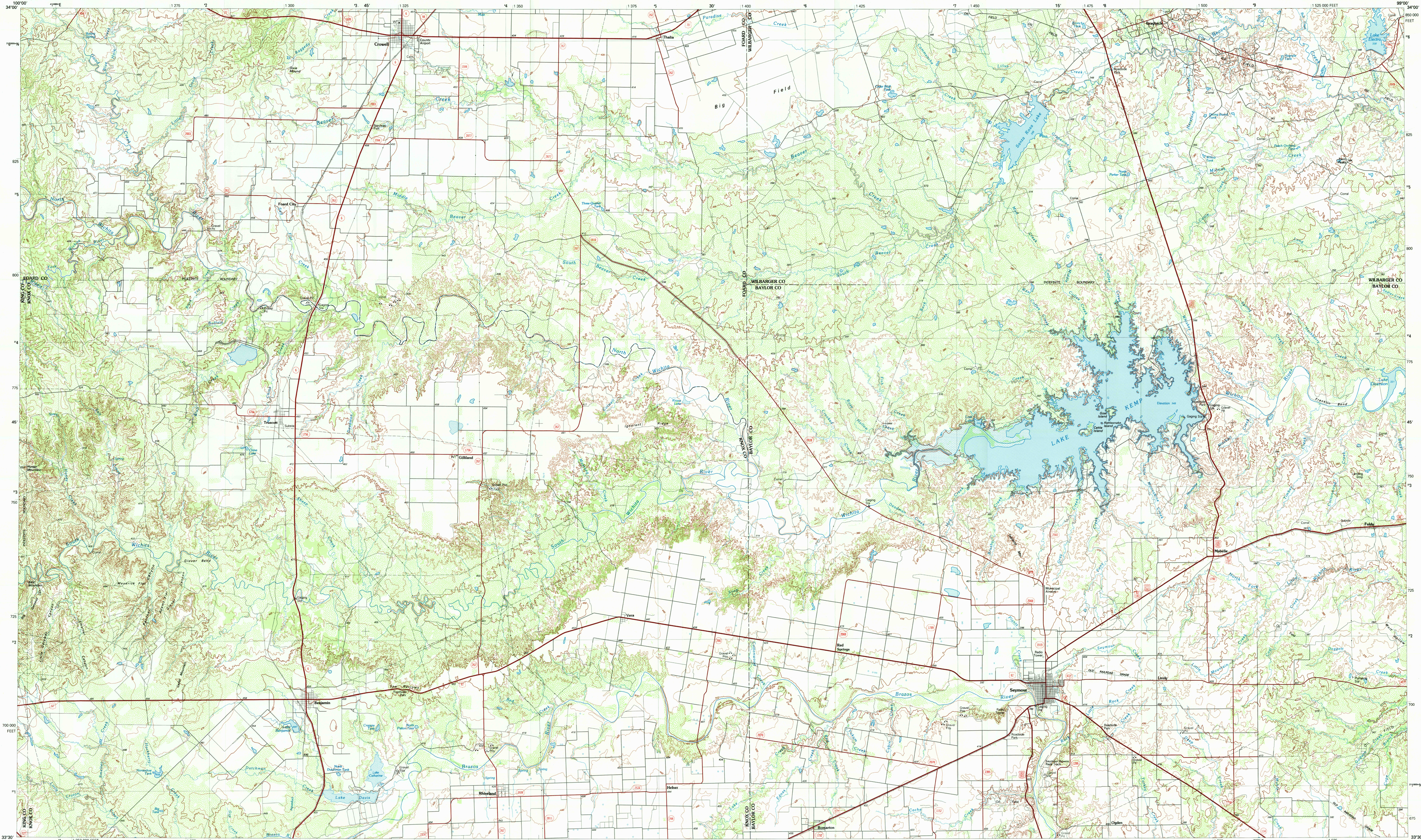
CONVERSION TABLE		DECLINATION DIAGRAM	ADJOINING MAPS
Meters	Feet		1 2 3
1	3.2808		4 5
2	6.5617		6 7 8
3	9.8425		
4	13.1234		
5	16.4042		
6	19.6850		
7	22.9659		
8	26.2467		
9	29.5275		
10	32.8084		
To convert meters to feet multiply by 3.2808		UTM grid convergence (GN) and 1985 magnetic declination (MD) at center of map. Diagram is approximate	1 Childress 2 Vernon 3 Burkhart 4 Dickens 5 Wichita Falls 6 Ackerly 7 Haskell 8 Graham
To convert feet to meters multiply by 0.3048			

FOR SALE BY U.S. GEOLOGICAL SURVEY
DENVER, COLORADO 80225, OR RESTON, VIRGINIA 22092

Topographic Map Symbols

Primary highway, hard surface	
Secondary highway, hard surface	
Light duty road, principal street, hard or improved surface	
Other road or street; trail	
Route marker: Interstate, U. S., State	
Railroad: standard gauge; narrow gauge	
Bridge: overpass; underpass	
Tunnel: road; railroad	
Built up area; locality; elevation	
Airport; landing field; landing strip	
National boundary	
State boundary	
County boundary	
National or State reservation boundary	
Land grant boundary	
U. S. public-lands survey: range, township, section	
Range, township, section line; protected	
Power transmission line; pipeline	
Dam; dam with lock	
Cemetery; building	
Windmill; water well; spring	
Mine shaft; salt or cave; mine; quarry; gravel pit	
Campground; picnic area; U. S. location monument	
Ruin; cliff dwelling	
Disturbed surface: strip mine, lava, sand	
Contours: index; intermediate; supplementary	
Bathymetric contours: index; intermediate	
Stream, lake: perennial; intermittent	
Rapids, large and small; falls, large and small	
Area to be submerged; marsh; swamp	
Land subject to controlled incursion; woodland	
Scrub; mangrove	
Orchard; vineyard	

A pamphlet describing topographic maps is available on request



SCALE 1:100 000

CONTOUR INTERVAL 10 METERS

LAKE KEMP, TEXAS

33099-E1-TM-10

1985