

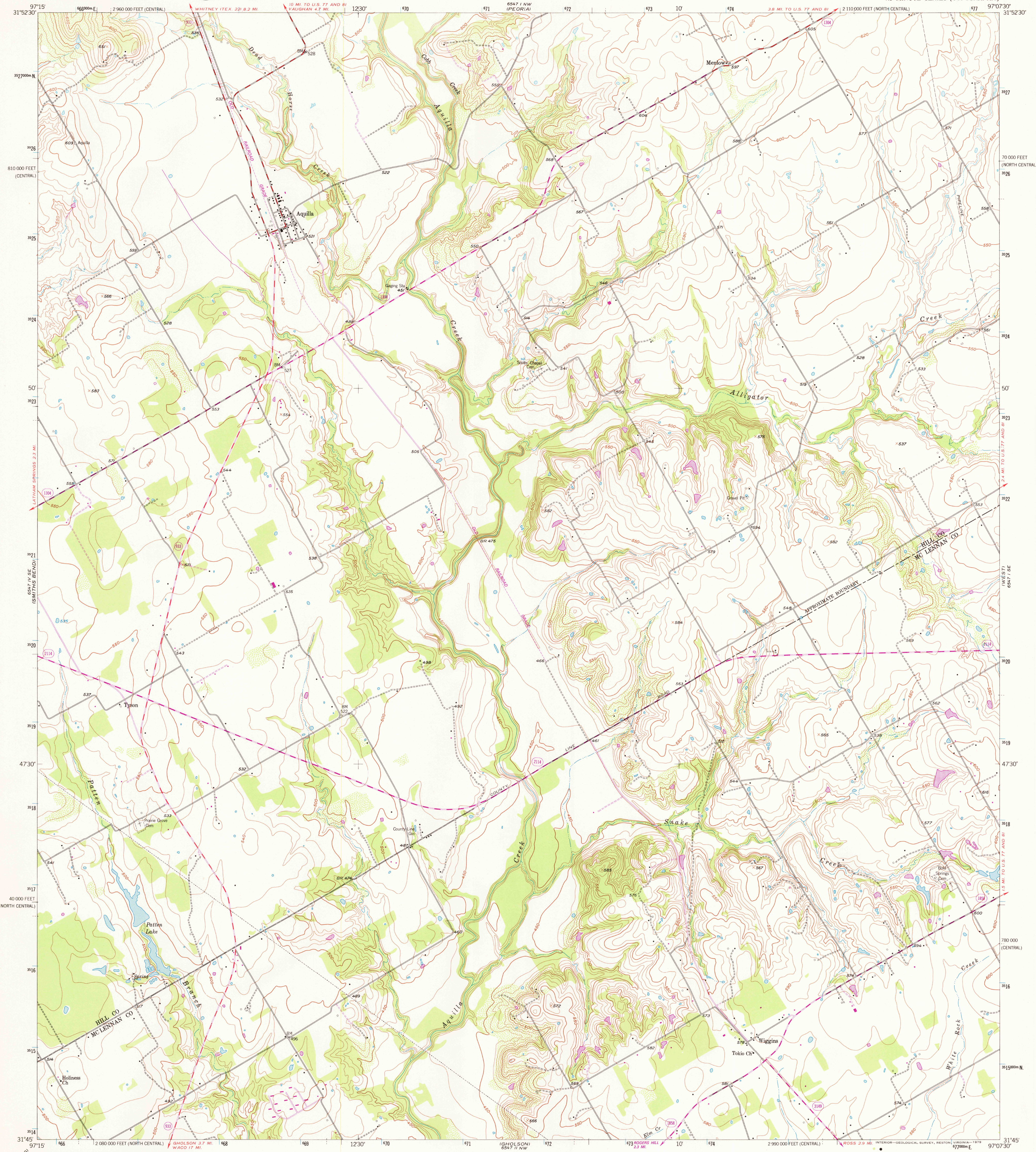
6547 I NE  
(WHITNEY)

UNITED STATES  
DEPARTMENT OF THE INTERIOR  
GEOLOGICAL SURVEY

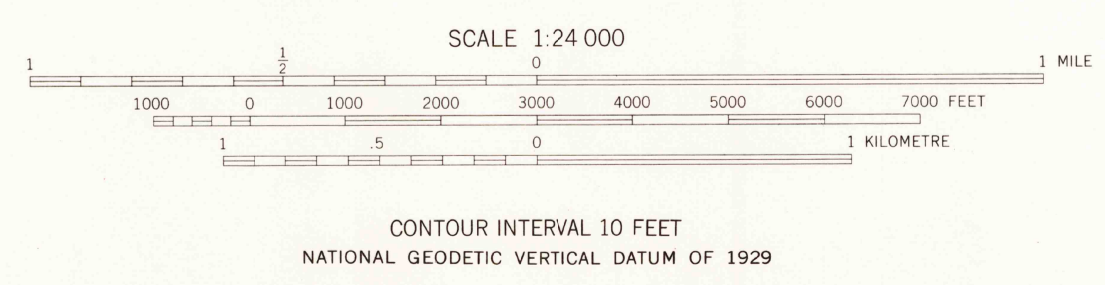
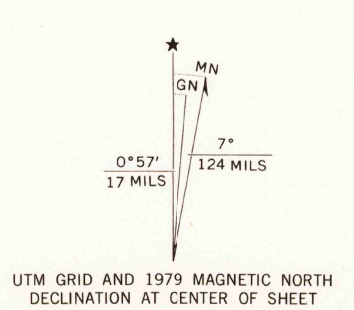


AQUILLA QUADRANGLE  
TEXAS  
7.5 MINUTE SERIES (TOPOGRAPHIC)

6547 I NE  
(ABSO 11)



Maped, edited, and published by the Geological Survey  
Control by USGS and USC&GS  
Topography from aerial photographs by ER-55 plotter  
Aerial photographs taken 1955. Field check 1957  
Polyconic projection. 1927 North American datum  
10,000 foot grid based on Texas coordinate system,  
north-central and central zones  
1000-metre Universal Transverse Mercator grid ticks,  
zone 14, shown in blue  
Revisions shown in purple and woodland compiled from  
aerial photographs taken 1976 and other source data  
This information not field checked. Map edited 1979



ROAD CLASSIFICATION  
Primary highway, all weather, hard surface  
Secondary highway, all weather, hard surface  
Light-duty road, all weather, improved surface  
Unimproved road, fair or dry weather  
Interstate Route  
U. S. Route  
State Route  
USGS  
Historical File  
Topographic Division  
AQUILLA, TEX.  
N3145-W9707.5/7.5  
1957  
PHOTOREVISED 1979  
AMS 6547 I SW-SERIES V882  
AUG 3 1979

THIS MAP COMPLIES WITH NATIONAL MAP ACCURACY STANDARDS  
FOR SALE BY U. S. GEOLOGICAL SURVEY, DENVER, COLORADO 80225, OR RESTON, VIRGINIA 22092  
A FOLDER DESCRIBING TOPOGRAPHIC MAPS AND SYMBOLS IS AVAILABLE ON REQUEST

3197-442

1500