

6544 III NW
UTILEY



U.S. DEPARTMENT OF THE INTERIOR
U.S. GEOLOGICAL SURVEY

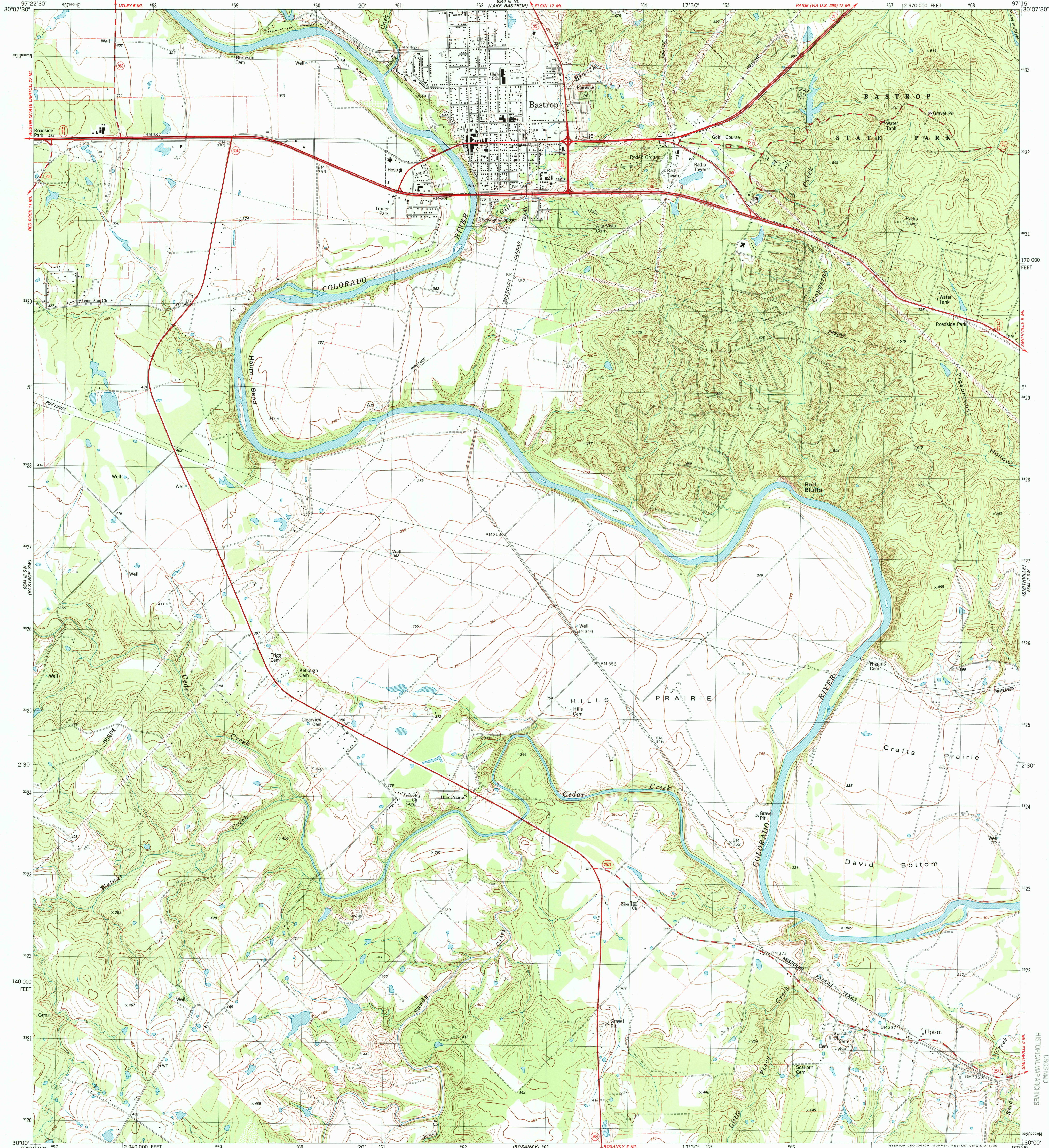
BASTROP QUADRANGLE

TEXAS-BASTROP CO.

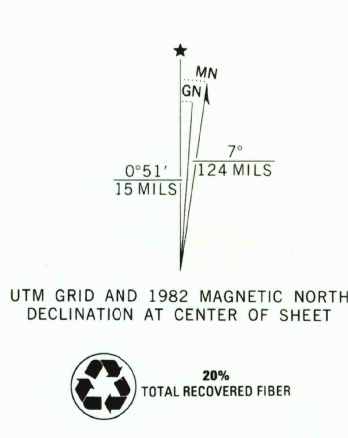
7.5 MINUTE SERIES (TOPOGRAPHIC)

SE/4 BASTROP 15' QUADRANGLE

6544 III NW
SMITHVILLE



Mapped, edited, and published by the Geological Survey
Control by USGS and NOS/NOAA
Topography by photogrammetric methods from aerial photographs
taken 1974. Field checked 1976. Map edited 1982
Projection and 10,000-foot grid ticks: Texas
coordinate system, central zone (Lambert conformal conic)
1000-meter Universal Transverse Mercator grid, zone 14
1927 North American Datum
To place on the predicted North American Datum 1983
move the projection lines 19 meters south and
27 meters east as shown by dashed corner ticks
Fine red dashed lines indicate selected fence lines
There may be private inholdings within the boundaries of
the National or State reservations shown on this map



SCALE 1:24 000
CONTOUR INTERVAL 10 FEET
DOTTED LINES REPRESENT 5-FOOT CONTOURS
NATIONAL GEODETIC VERTICAL DATUM OF 1929
THIS MAP COMPLIES WITH NATIONAL MAP ACCURACY STANDARDS
FOR SALE BY U.S. GEOLOGICAL SURVEY, P.O. BOX 25286, DENVER, COLORADO 80225
A FOLDER DESCRIBING TOPOGRAPHIC MAPS AND SYMBOLS IS AVAILABLE ON REQUEST



ROAD CLASSIFICATION
Primary highway, hard surface
Secondary highway, hard surface
Unimproved road
Interstate Route
U. S. Route
State Route
BASTROP, TEX.
SE/4 BASTROP 15' QUADRANGLE
30097-A3-TF-024
1982
DMA 6544 III SE-SERIES V882

RECEIVED
MAR 3 1 2000
USGS MWD
HISTORICAL MAP ARCHIVES
0288671 09082 6
X-7589-N-707-D-N831