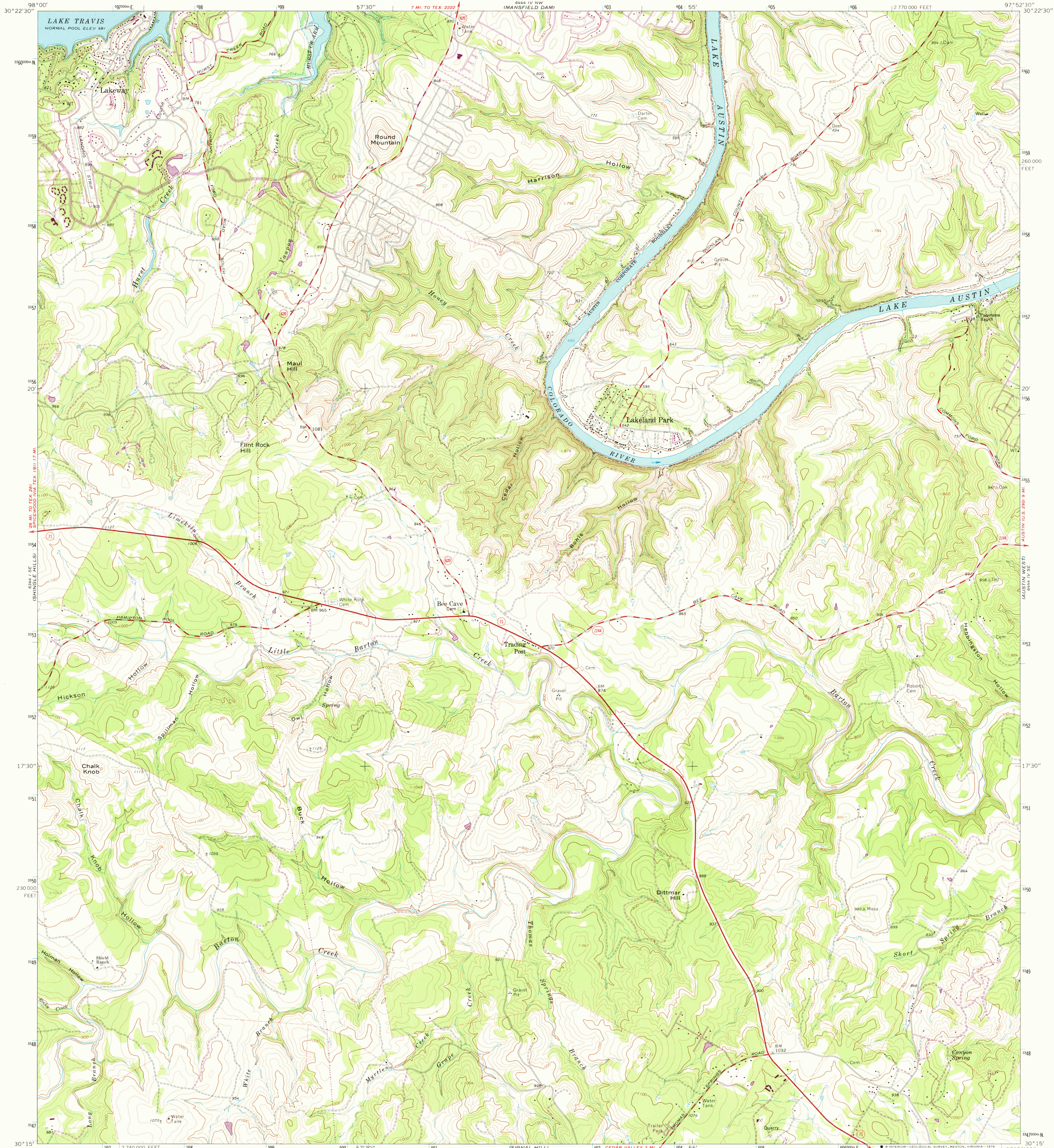
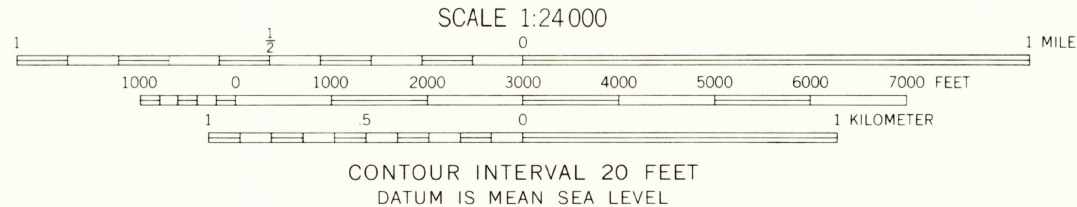
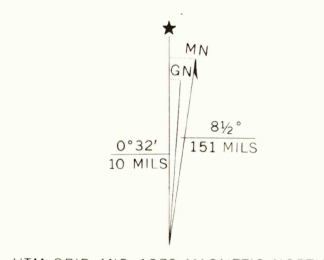


UNITED STATES  
DEPARTMENT OF THE INTERIOR  
GEOLOGICAL SURVEY

BEE CAVE QUADRANGLE  
TEXAS—TRAVIS CO.  
7.5 MINUTE SERIES (TOPOGRAPHIC)  
SW/4 LAKE TRAVIS 15 QUADRANGLE



Mapped, edited, and published by the Geological Survey  
Control by USGS and USC&GS  
Topography by photogrammetric methods from aerial photographs taken 1967. Field checked 1968  
Polyconic projection. 1927 North American datum 10,000-foot grid based on Texas coordinate system, central zone  
1000-meter Universal Transverse Mercator grid ticks, zone 14, shown in blue  
Fine red dashed lines indicate selected fence lines  
Areas covered by dashed light-blue pattern are subject to controlled inundation  
Revisions shown in purple compiled from aerial photographs taken 1973. This information not field checked



ROAD CLASSIFICATION  
Primary highway, hard surface  
Secondary highway, hard surface  
Unimproved road  
Light-duty road, hard or improved surface  
Interstate Route  
U. S. Route  
State Route



THIS MAP COMPLIES WITH NATIONAL MAP ACCURACY STANDARDS  
FOR SALE BY U. S. GEOLOGICAL SURVEY, DENVER, COLORADO 80225, OR RESTON, VIRGINIA 22092  
A FOLDER DESCRIBING TOPOGRAPHIC MAPS AND SYMBOLS IS AVAILABLE ON REQUEST

UCCS  
Historical File  
Topographic Division

BEE CAVE, TEX.  
SW/4 LAKE TRAVIS 15 QUADRANGLE  
N3015—W9752.5/7.5  
1968  
PHOTOREVISED 1973  
AMS 6444 IV SW—SERIES V882

MAR 18 1975  
2600