

UNITED STATES
DEPARTMENT OF THE INTERIOR
GEOLOGICAL SURVEY

BERRY SAND DRAW QUADRANGLE
TEXAS-POTTER CO.

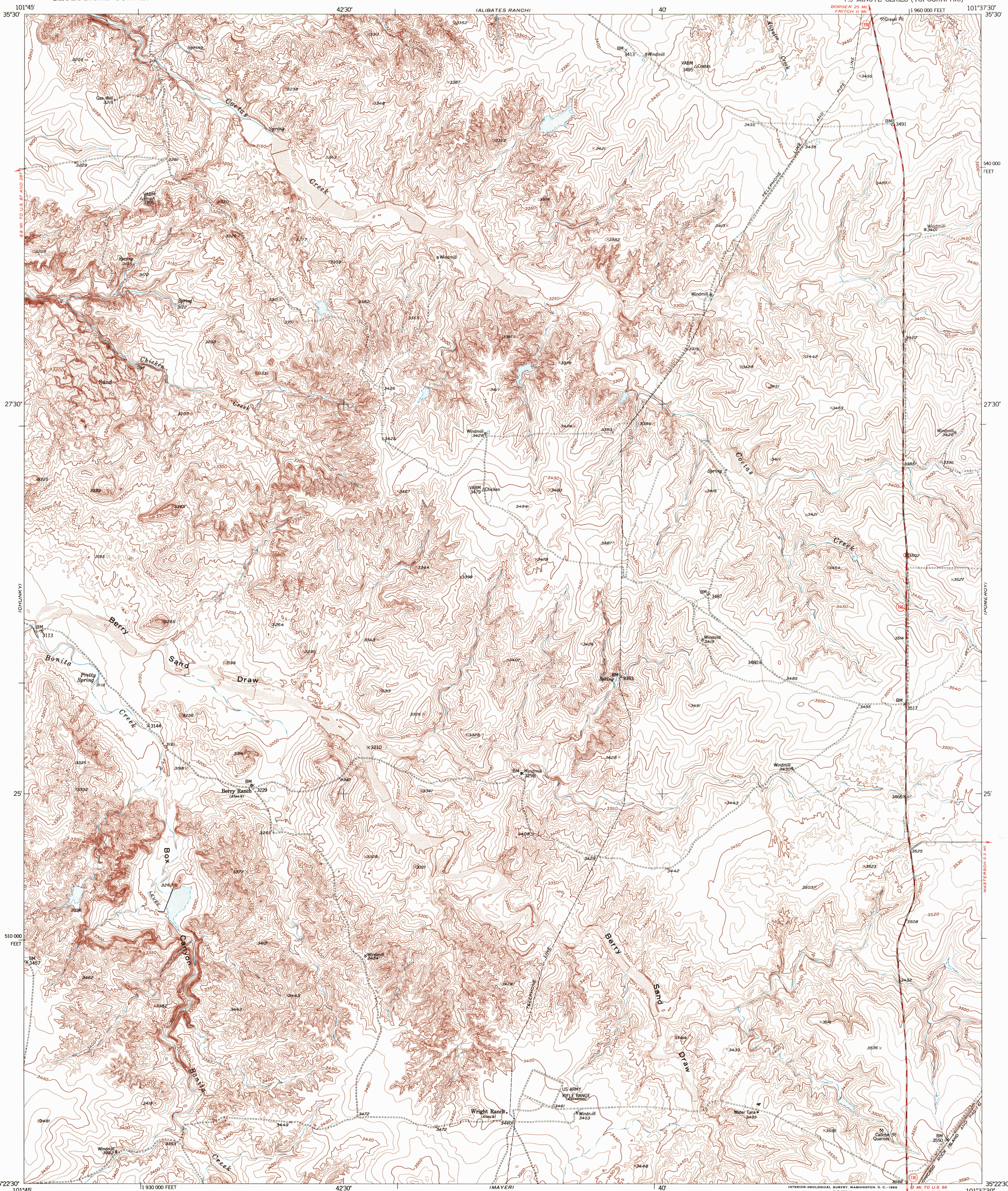
7.5 MINUTE SERIES (TOPOGRAPHIC)

BORGER 20 MI
FRITCH 11 MI

1:960 000 FEET

101°37'30"

100' 100' 100'

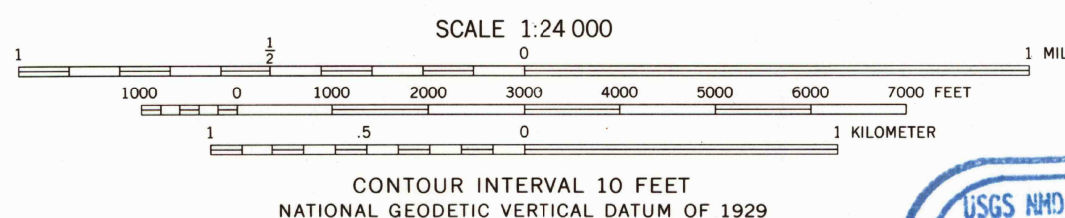


Mapped, edited, and published by the Geological Survey
Control by USGS and USC&GS

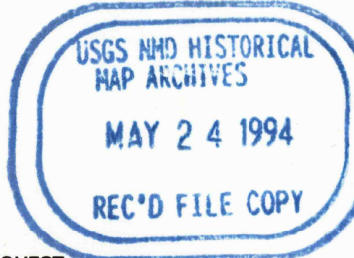
Topography from aerial photographs by multiplex methods
Aerial photographs taken 1951. Field check 1953

Polyconic projection. 1927 North American datum
10,000-foot grid based on Texas coordinate system,
north zone

TRUE NORTH
MAGNETIC NORTH
APPROXIMATE MEAN
DECLINATION, 1953



THIS MAP COMPLIES WITH NATIONAL MAP ACCURACY STANDARDS
FOR SALE BY U.S. GEOLOGICAL SURVEY
DENVER, COLORADO 80225, OR RESTON, VIRGINIA 22092
A FOLDER DESCRIBING TOPOGRAPHIC MAPS AND SYMBOLS IS AVAILABLE ON REQUEST



QUADRANGLE LOCATION

ROAD CLASSIFICATION
Heavy-duty 1 LANE 16 LANE Light-duty
Medium-duty 1 LANE 16 LANE Unimproved dirt
U. S. Route State Route

BERRY SAND DRAW, TEX.
N3522.5-W10137.5/7.5

1953