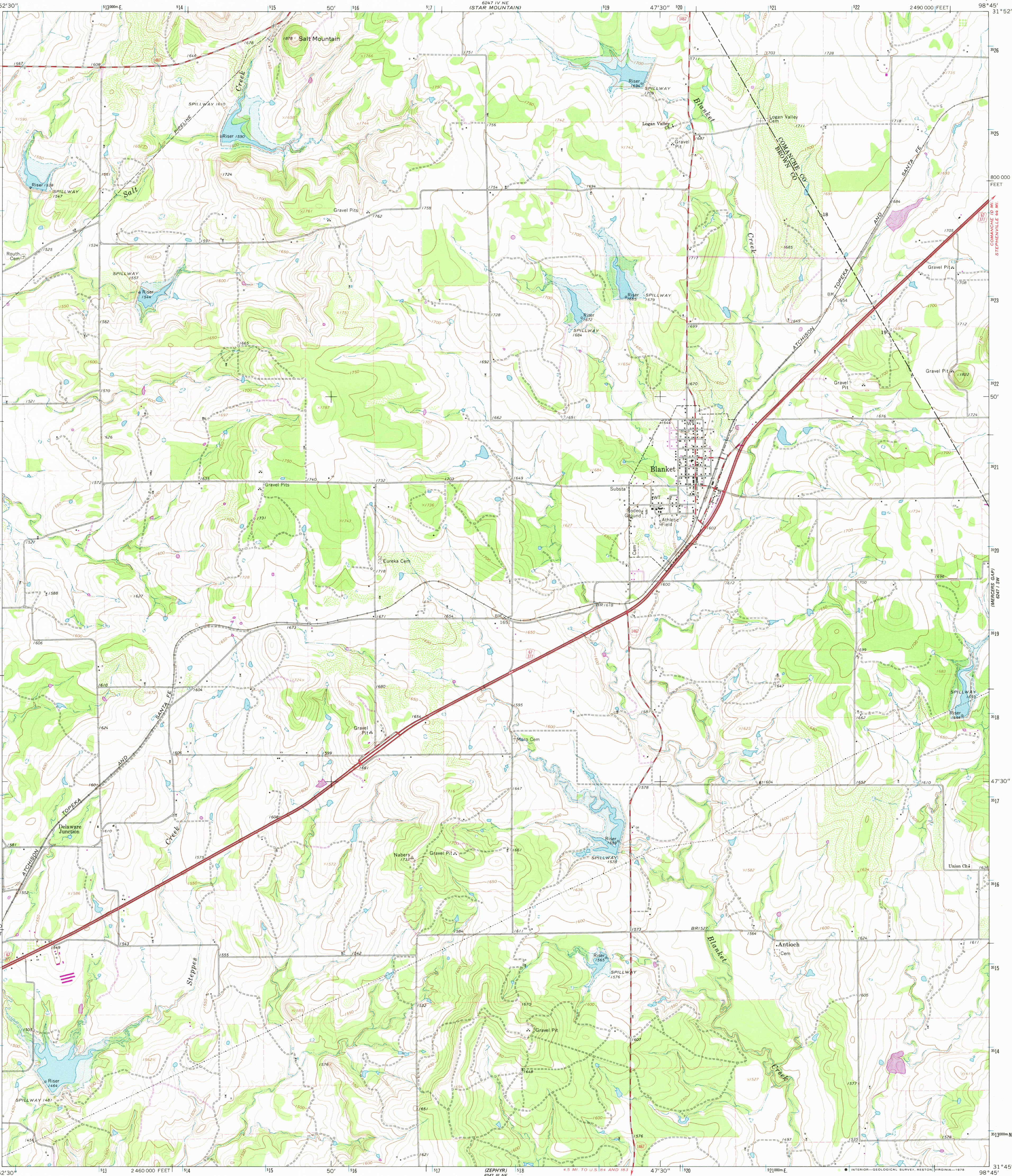


UNITED STATES
DEPARTMENT OF THE INTERIOR
GEOLOGICAL SURVEY

STATE OF TEXAS
TEXAS WATER DEVELOPMENT BOARD

BLANKET QUADRANGLE
TEXAS
7.5 MINUTE SERIES (TOPOGRAPHIC)



Mapped, edited, and published by the Geological Survey

Control by USGS and NOS/NOAA

Topography by photogrammetric methods from aerial

photographs taken 1965. Field checked 1966

Polyconic projection. 1927 North American datum

10,000-foot grid based on Texas coordinate system,

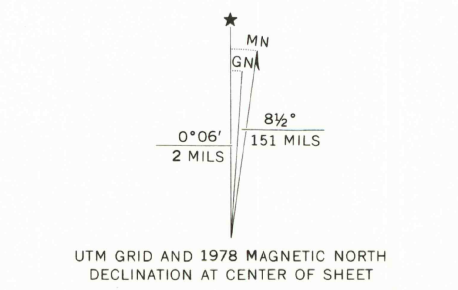
central zone. 1000-meter Universal Transverse Mercator grid ticks,

zone 14, shown in blue

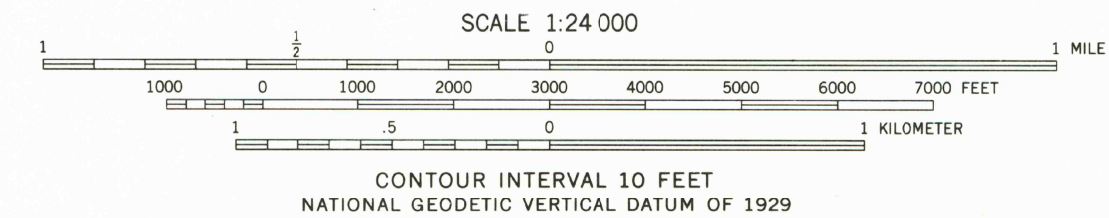
Fine red dashed lines indicate selected fence lines

Areas covered by dashed light-blue pattern are subject

to controlled inundation



Revisions shown in purple compiled from aerial
photographs taken 1976. Map edited 1978
This information not field checked

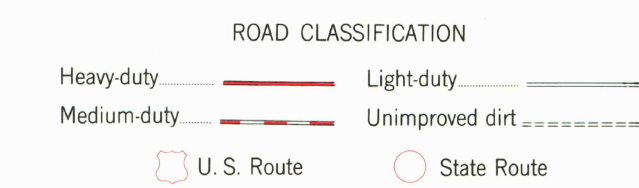


THIS MAP COMPLIES WITH NATIONAL MAP ACCURACY STANDARDS
FOR SALE BY U. S. GEOLOGICAL SURVEY, DENVER, COLORADO 80225, OR RESTON, VIRGINIA 22092
A FOLDER DESCRIBING TOPOGRAPHIC MAPS AND SYMBOLS IS AVAILABLE ON REQUEST



QUADRANGLE LOCATION

3198-331



USGS
Historical File
Topographic Division

NOV 28 1978
BLANKET, TEX.
N3145-W9845/7.5

1966
PHOTOREVISED 1978
AMS 6247 IV SE-SERIES V882