

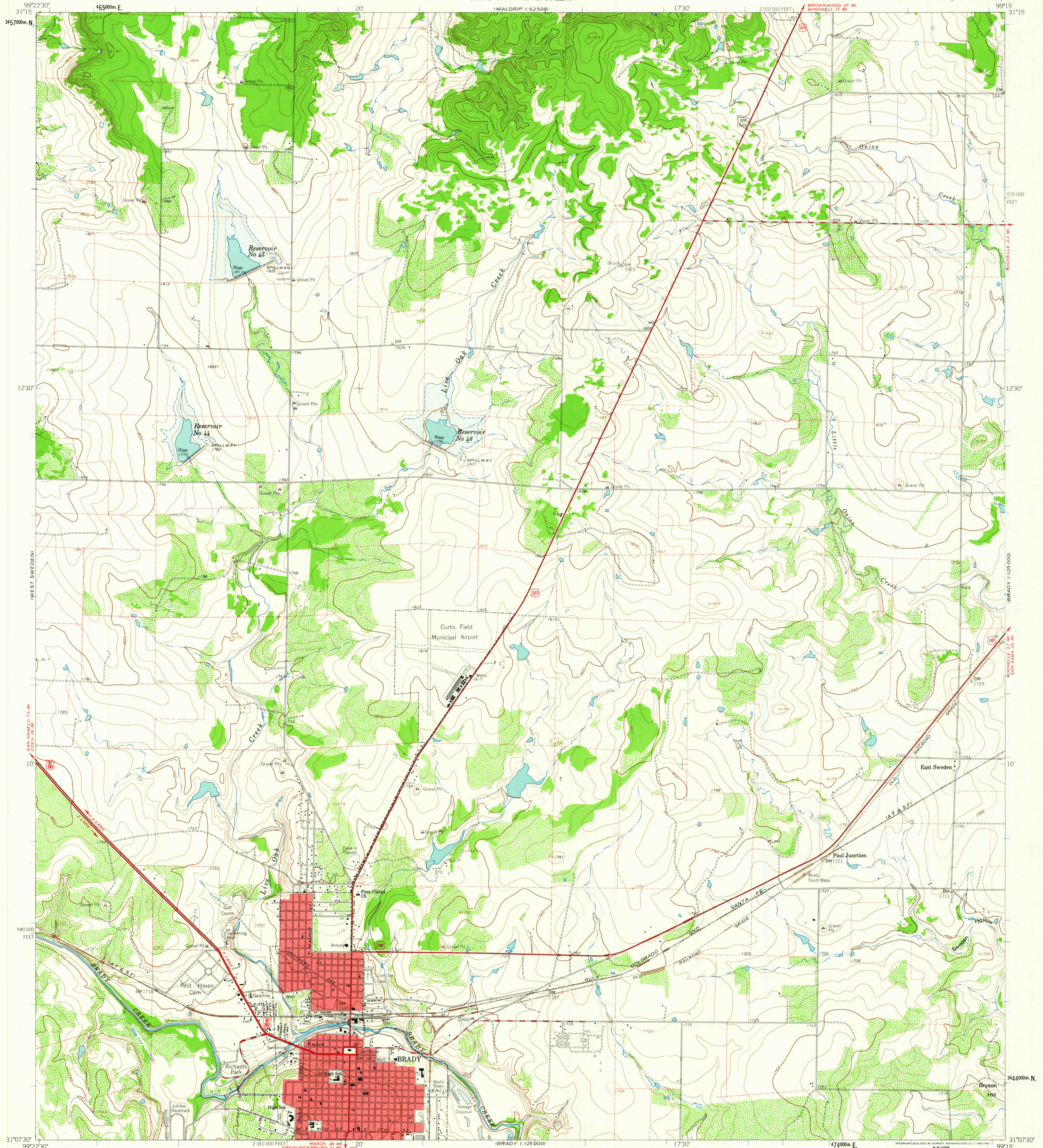
WALDRIP  
1:62,500

UNITED STATES  
DEPARTMENT OF THE INTERIOR  
GEOLOGICAL SURVEY

STATE OF TEXAS  
BOARD OF WATER ENGINEERS

BRADY NORTH QUADRANGLE  
TEXAS-MCCULLOCH CO.  
7.5 MINUTE SERIES (TOPOGRAPHIC)

MERCURY  
1:62,500



Mapped, edited, and published by the Geological Survey  
Control by USGS and USC&GS  
Topography from aerial photographs by photogrammetric methods  
Aerial photographs taken 1958. Field check 1960  
Polyconic projection. 1927 North American datum  
10,000-foot grid based on Texas coordinate system,  
central zone  
1000-meter Universal Transverse Mercator grid ticks,  
zone 14, shown in blue  
Fine red dashed lines indicate selected fence and field lines  
where generally visible on aerial photographs  
This information is unchecked  
Red tint indicates areas in which only landmark buildings are shown  
Areas covered by dashed light blue pattern are subject  
to controlled inundation.

TRUE NORTH  
MAGNETIC NORTH  
APPROXIMATE MEAN  
DECLINATION, 1960

SCALE 1:24,000  
1000 0 1000 2000 3000 4000 5000 6000 7000 FEET  
1 KILOMETER  
CONTOUR INTERVAL 10 FEET  
DOTTED LINES REPRESENT 5-FOOT CONTOURS  
DATUM IS MEAN SEA LEVEL

THIS MAP COMPLIES WITH NATIONAL MAP ACCURACY STANDARDS  
FOR SALE BY U.S. GEOLOGICAL SURVEY, DENVER 25, COLORADO OR WASHINGTON 25, D.C.  
A FOLDER DESCRIBING TOPOGRAPHIC MAPS AND SYMBOLS IS AVAILABLE ON REQUEST



ROAD CLASSIFICATION  
Heavy-duty ——— Light-duty ———  
Medium-duty ——— Unimproved dirt ———  
U.S. Route

U.S.G.S.  
FILE COPY  
TOPOGRAPHIC DIVISION

BRADY NORTH, TEX.  
N31075-W9915/7.5  
1960

FEB - 5 1962  
1990