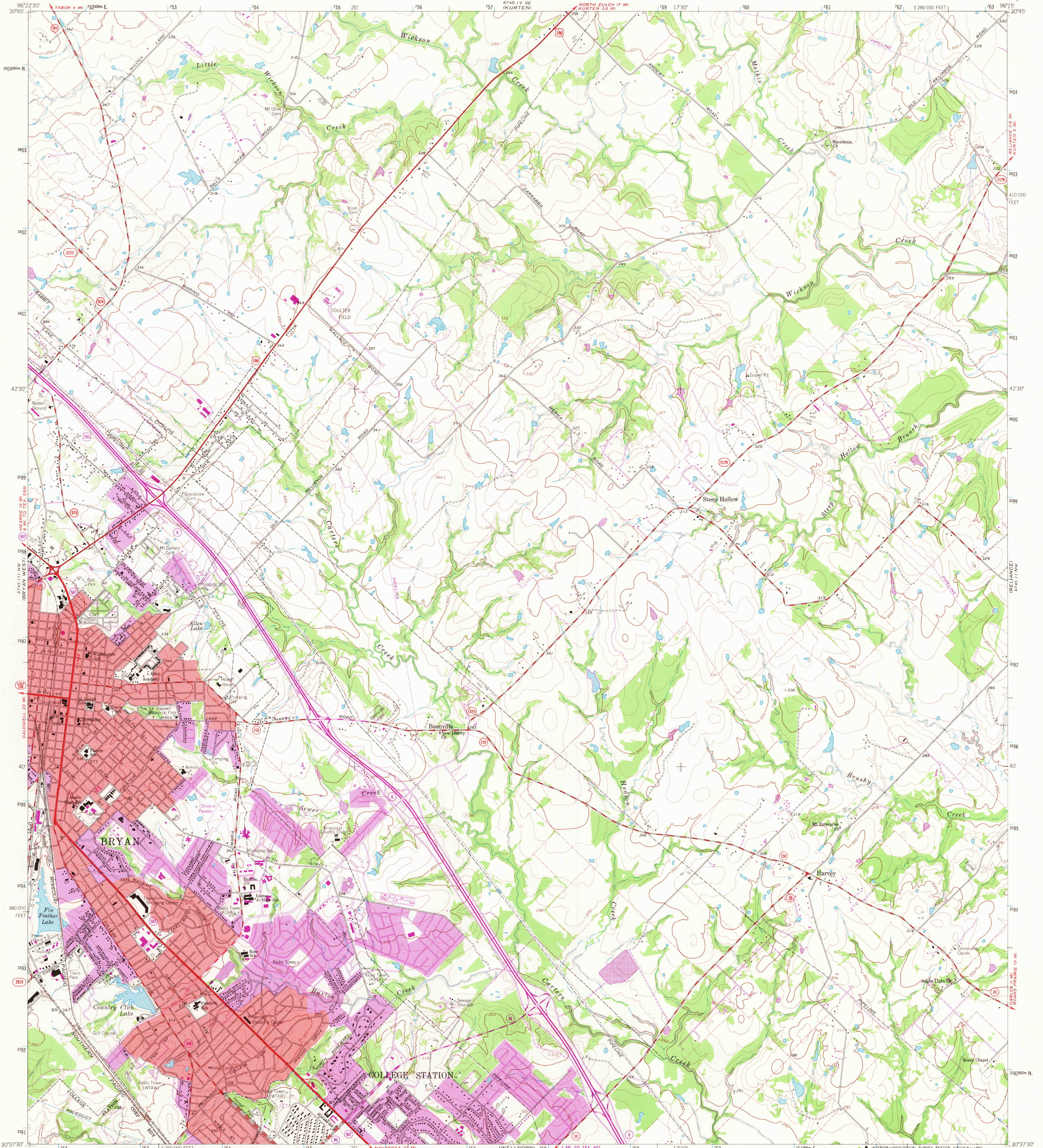


UNITED STATES  
DEPARTMENT OF THE INTERIOR  
GEOLOGICAL SURVEY

BRYAN EAST QUADRANGLE  
TEXAS-BRAZOS CO.  
7.5 MINUTE SERIES (TOPOGRAPHIC)



Mapped, edited, and published by the Geological Survey

Control by USGS and NOS/NOAA

Topography by photogrammetric methods from aerial  
photographs taken 1961. Field checked 1962

Polyconic projection. 1927 North American datum  
10,000-foot grid based on Texas coordinate system, central zone  
1000-meter Universal Transverse Mercator grid ticks,  
zone 14, shown in blue

Red tint indicates area in which only landmark buildings are shown

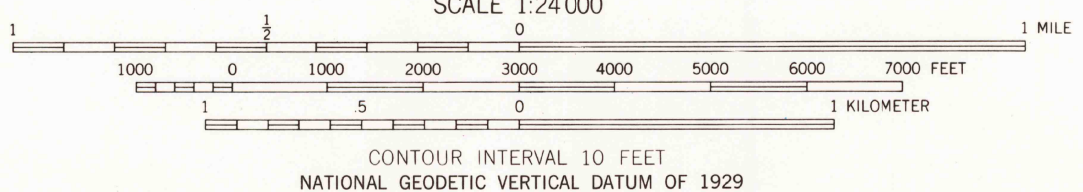
Fine red dashed lines indicate selected fence lines

To place on the predicted North American Datum 1983  
move the projection lines 17 meters south and  
24 meters east as shown by dashed corner ticks

Purple tint indicates extension of urban areas

Revisions shown in purple compiled from aerial photographs  
taken 1977 and other source data. This information not  
field checked. Map edited 1980

UTM GRID AND 1980 MAGNETIC NORTH  
DECLINATION AT CENTER OF SHEET



THIS MAP COMPLIES WITH NATIONAL MAP ACCURACY STANDARDS  
FOR SALE BY U. S. GEOLOGICAL SURVEY, DENVER, COLORADO 80225, OR RESTON, VIRGINIA 22092  
A FOLDER DESCRIBING TOPOGRAPHIC MAPS AND SYMBOLS IS AVAILABLE ON REQUEST



QUADRANGLE LOCATION

3096-424

USGS  
Historical File  
Topographic Division

BRYAN EAST, TEX.  
N3037.5-W9615.7 5

1962  
PHOTOREVISED 1980  
DMA 6745 III NE-SERIES V882

NOV 17 1980