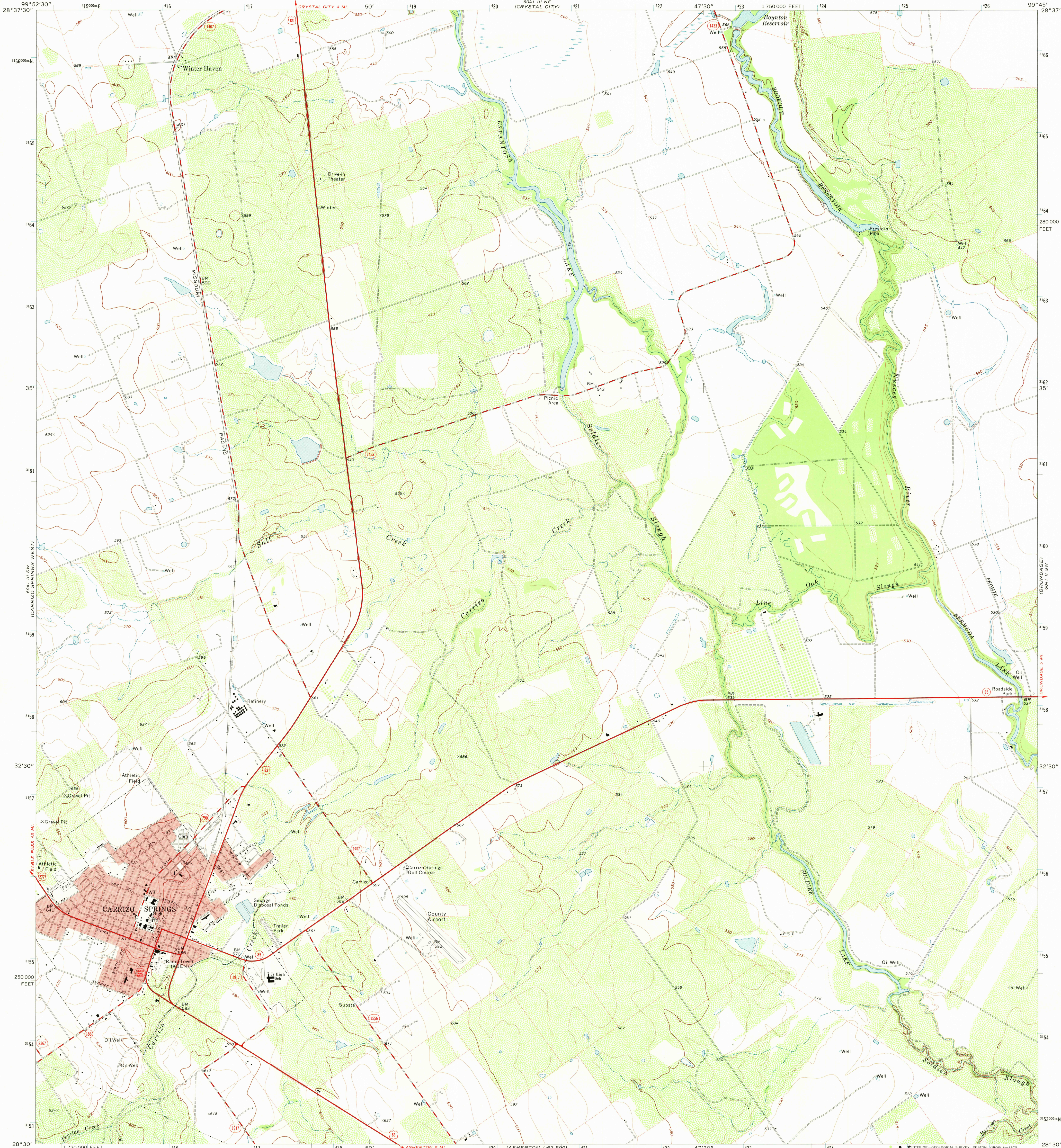


UNITED STATES  
DEPARTMENT OF THE INTERIOR  
GEOLOGICAL SURVEY

CARRIZO SPRINGS EAST QUADRANGLE  
TEXAS—DIMMIT CO.  
7.5 MINUTE SERIES (TOPOGRAPHIC)



Mapped, edited, and published by the Geological Survey

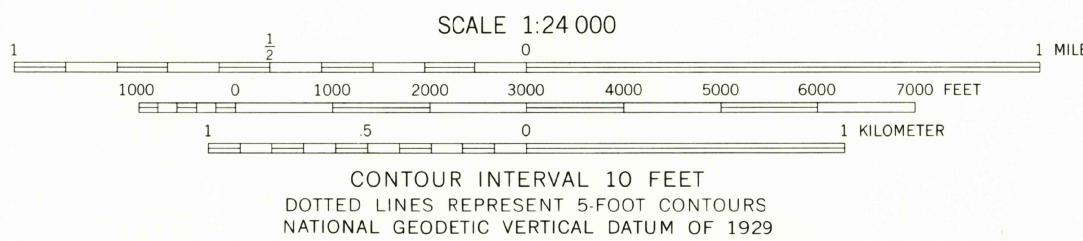
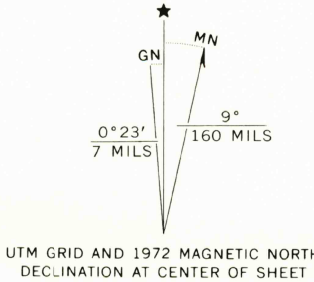
Control by USGS and USC&GS

Topography by photogrammetric methods from aerial  
photographs taken 1971. Field checked 1972

Projection and 10,000-foot grid ticks: Texas  
coordinate system, south central zone (Lambert conformal conic)  
1,000-meter Universal Transverse Mercator grid ticks,  
zone 14, shown in blue. 1927 North American datum

Red tint indicates areas in which only  
landmark buildings are shown

Fine red dashed lines indicate selected fence lines



QUADRANGLE LOCATION

USGS  
HISTORICAL FILE  
TOPOGRAPHIC DIVISION

ROAD CLASSIFICATION	
Primary highway, hard surface	Light-duty road, hard or improved surface
Secondary highway, hard surface	Unimproved road
Interstate Route	U. S. Route
	State Route

CARRIZO SPRINGS EAST, TEX.  
N2830—W9945/7.5

1972

AMS 6041 III SE—SERIES V882

JUN 30 1975

2950