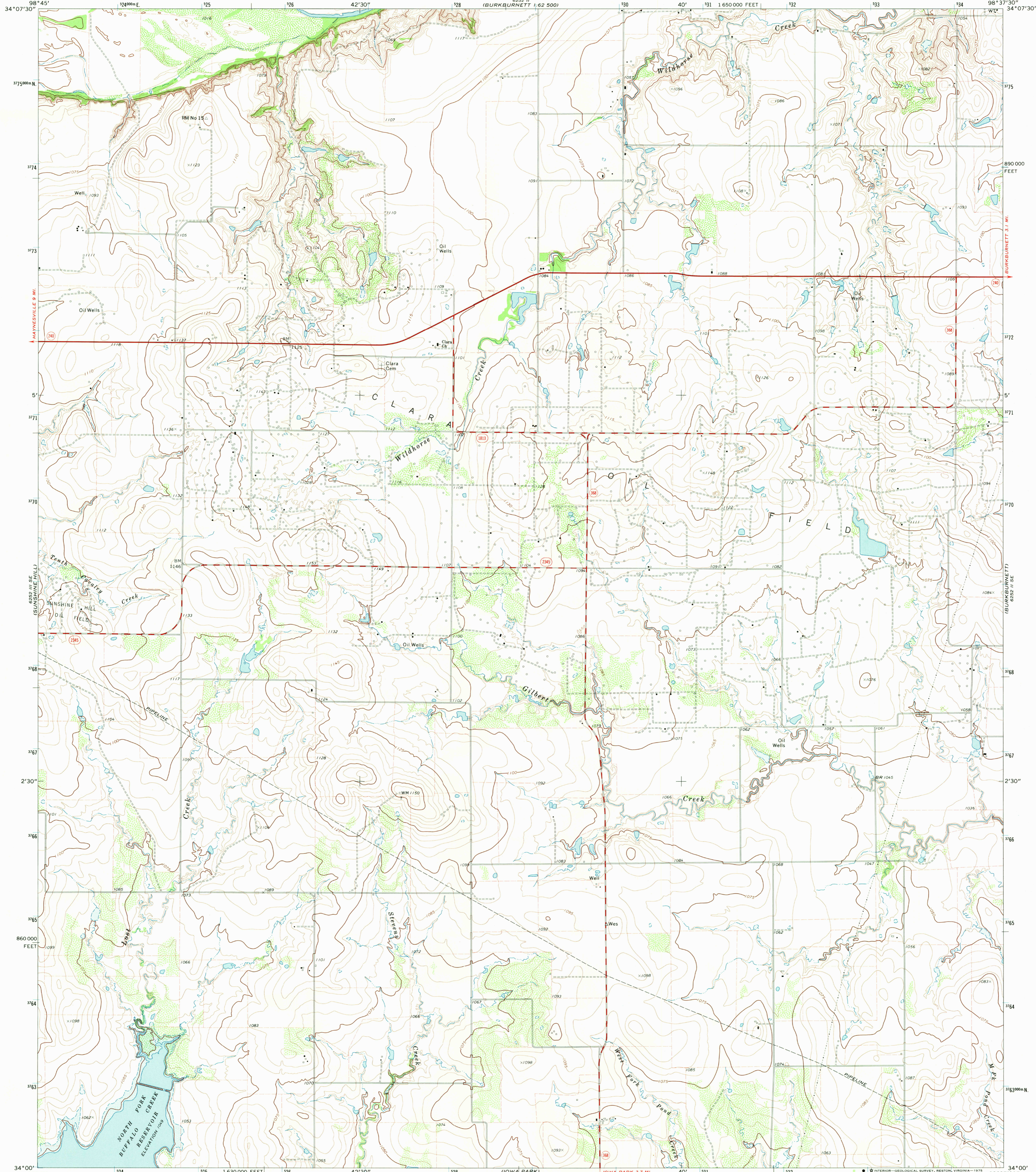


5252 II SW-162 5000
ELECTRA 1/62 5000

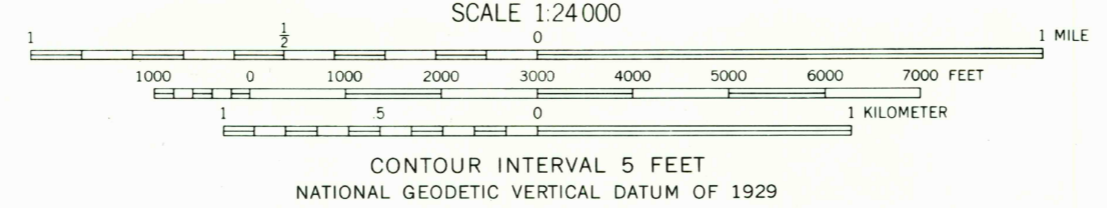
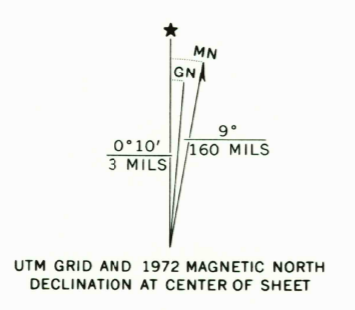
UNITED STATES
DEPARTMENT OF THE INTERIOR
GEOLOGICAL SURVEY

CLARA QUADRANGLE
TEXAS-WICHITA CO.
7.5 MINUTE SERIES (TOPOGRAPHIC)
SW 1/4 BURKBURNETT 15' QUADRANGLE

5252 II SW-162 5000
BURKBURNETT 1/62 5000



Maped, edited, and published by the Geological Survey
Control by USGS and USC&GS
Topography by photogrammetric methods from aerial
photographs taken 1971. Field checked 1972
Supersedes Clara map dated 1915
Projection and 10,000-foot grid ticks: Texas
coordinate system, north central zone (Lambert conformal conic)
1000-meter Universal Transverse Mercator grid ticks,
zone 14, shown in blue. 1927 North American datum
Fine red dashed lines indicate selected fence lines
Areas covered by light-blue pattern are
subject to controlled inundation



| ROAD CLASSIFICATION | |
|---------------------------------|---|
| Primary highway, hard surface | Light-duty road, hard or improved surface |
| Secondary highway, hard surface | Unimproved road |
| Interstate Route | U.S. Route |
| | State Route |

THIS MAP COMPLIES WITH NATIONAL MAP ACCURACY STANDARDS
FOR SALE BY U.S. GEOLOGICAL SURVEY, DENVER, COLORADO 80225, OR RESTON, VIRGINIA 22092
A FOLDER DESCRIBING TOPOGRAPHIC MAPS AND SYMBOLS IS AVAILABLE ON REQUEST

USGS
HISTORICAL FILE
TOPOGRAPHIC DIVISION

CLARA, TEX.
SW 1/4 BURKBURNETT 15' QUADRANGLE
N3400-W9837.5/7.5
1972
AMS 6252 II SW-SERIES V882

3150
JAN 31 1975
JAN 3 1975
WICHITA FALLS WEST