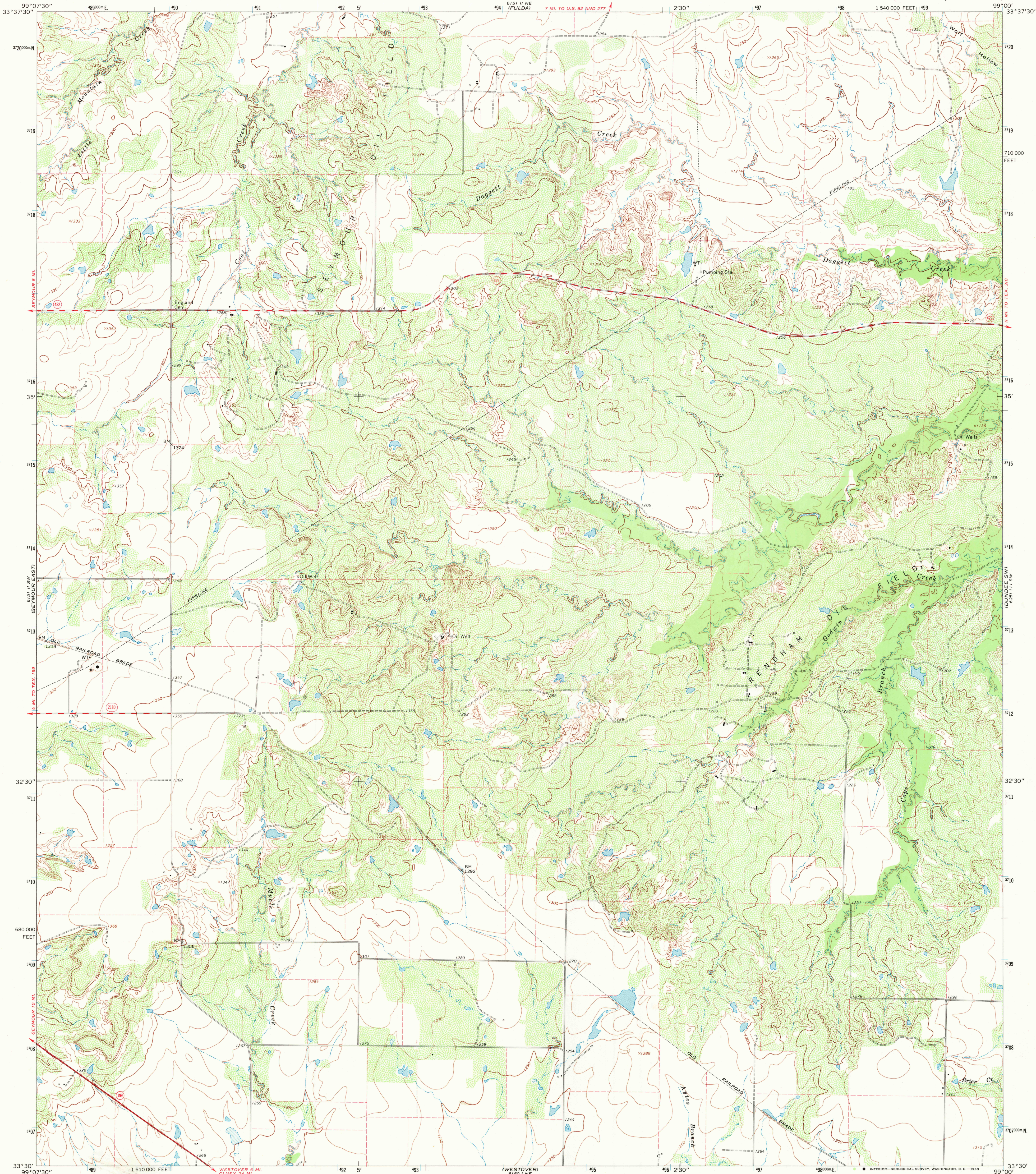
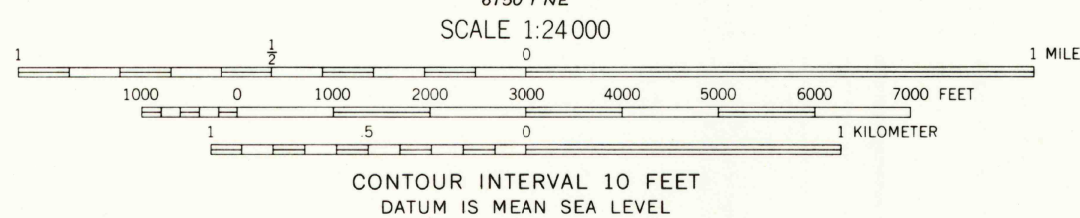
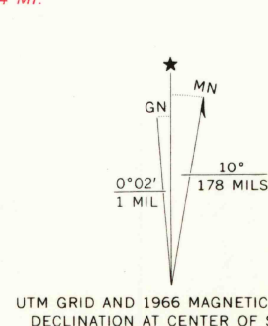


UNITED STATES
DEPARTMENT OF THE INTERIOR
GEOLOGICAL SURVEY

COPE BRANCH QUADRANGLE
TEXAS—BAYLOR CO.
7.5 MINUTE SERIES (TOPOGRAPHIC)



Mapped, edited, and published by the Geological Survey
Control by USGS and USC&GS
Topography by photogrammetric methods from aerial
photographs taken 1965. Field checked 1966
Polyconic projection. 1927 North American datum
10,000-foot grid based on Texas coordinate system,
north central zone
1000-meter Universal Transverse Mercator grid ticks,
zone 14, shown in blue
Fine red dashed lines indicate selected fence lines



U.S.G.S.
FILE COPY
TOPOGRAPHIC DIVISION

COPE BRANCH, TEX.
N3330—W9900/7.5

1966

AMS 6151 II SE—SERIES V882

2270

AUG 21 1968