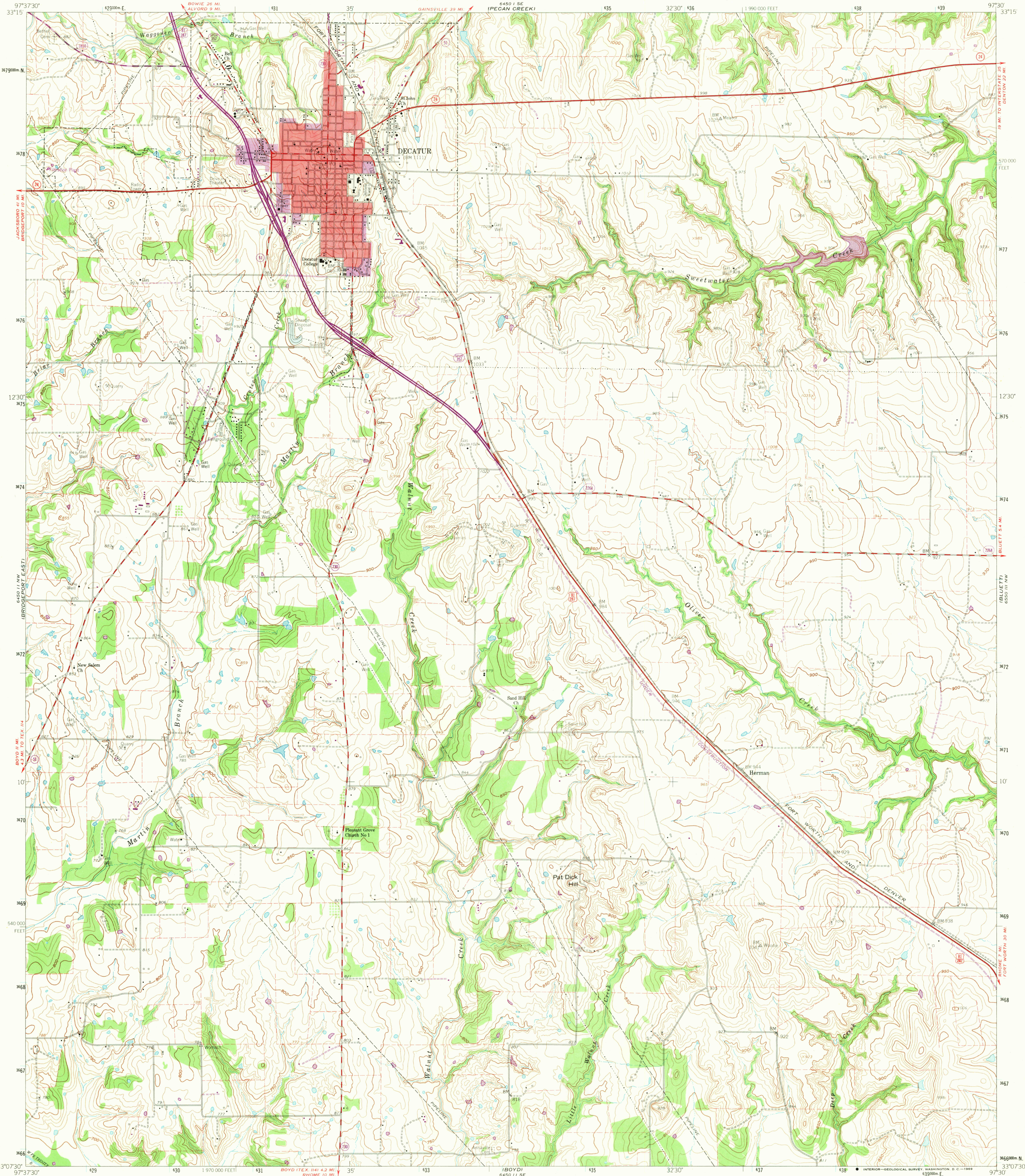


6450 11 NW
(ALVORD)

UNITED STATES
DEPARTMENT OF THE INTERIOR
GEOLOGICAL SURVEY

DECATUR QUADRANGLE
TEXAS—WISE CO.
7.5 MINUTE SERIES (TOPOGRAPHIC)
NE 1/4 BOYD 15' QUADRANGLE



Mapped, edited, and published by the Geological Survey
Control by USGS and USC&GS
Topography from aerial photographs by photogrammetric methods
Aerial photographs taken 1957. Field check 1960
Polyconic projection. 1927 North American datum
10,000-foot grid based on Texas coordinate system,
north central zone
1000-meter Universal Transverse Mercator grid ticks,
zone 14, shown in blue
Fine red dashed lines indicate selected fence and field lines
where generally visible on aerial photographs
This information is unchecked
Red tint indicates area in which only
landmark buildings are shown

Revisions shown in purple compiled by the Geological Survey from
aerial photographs taken 1968. This information not field checked
Purple tint indicates extension of urban areas

THIS MAP COMPLIES WITH NATIONAL MAP ACCURACY STANDARDS
FOR SALE BY U.S. GEOLOGICAL SURVEY, DENVER, COLORADO 80225, OR WASHINGTON, D.C. 20242
A FOLDER DESCRIBING TOPOGRAPHIC MAPS AND SYMBOLS IS AVAILABLE ON REQUEST



U.S.G.S.
FILE COPY
TOPOGRAPHIC DIVISION

ROAD CLASSIFICATION
Heavy-duty ——— U.S. Route
Medium-duty ——— State Route
Light-duty ———
Unimproved dirt ———

DECATUR, TEX.
N3307.5-W9730.7 5
1960
PHOTOREVISED 1968
AMS 6450 11 NE—SERIES V882

2745
MAR 6 1969