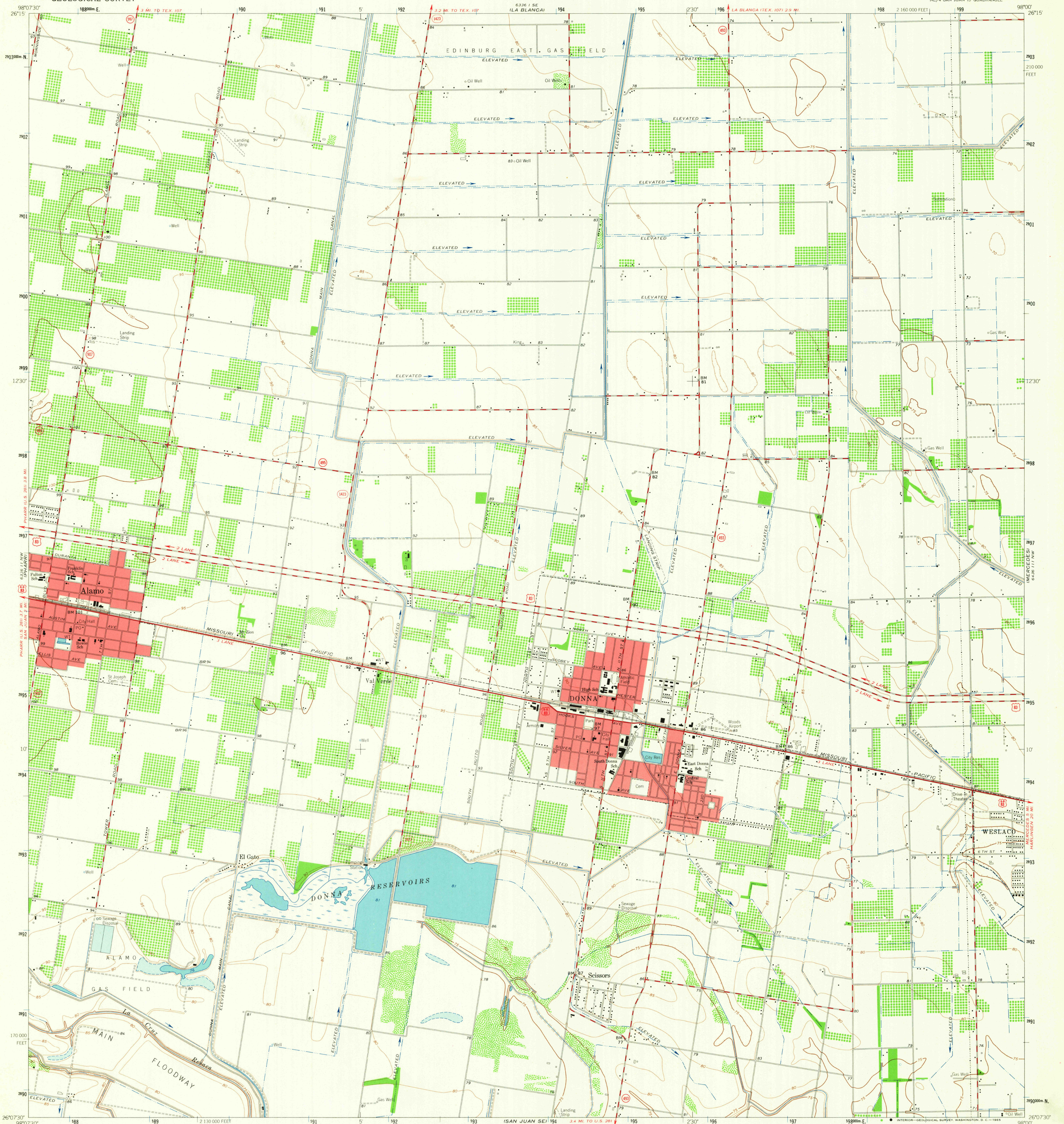


4 mi NW
EDINBURG

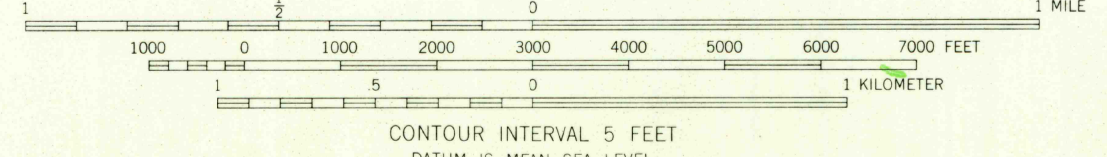
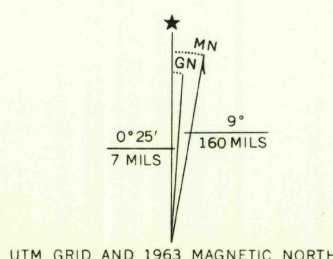
UNITED STATES
DEPARTMENT OF THE INTERIOR
GEOLOGICAL SURVEY

DONNA QUADRANGLE
TEXAS-HIDALGO CO.
7.5 MINUTE SERIES (TOPOGRAPHIC)
NE/4 SAN JUAN IS QUADRANGLE

4 mi NE
EDINBURG



Mapped, edited, and published by the Geological Survey
Control by USGS and USC&GS
Planimetry by photogrammetric methods from aerial photographs
taken 1961. Topography by planetable surveys 1963
Polyconic projection. 1927 North American datum
10,000-foot grid based on Texas coordinate system, south zone
1000-meter Universal Transverse Mercator grid ticks,
zone 14, shown in blue
Red tint indicates areas in which only landmark buildings are shown



ROAD CLASSIFICATION

Heavy duty	Light duty
Medium-duty	Unimproved dirt
U.S. Route	State Route



U.S.G.S.
FILE COPY
TOPOGRAPHIC DIVISION

DONNA, TEX.
NE/4 SAN JUAN IS QUADRANGLE
N2607 5-W9800/7-5
1963

2540
FEB 15 1965

THIS MAP COMPLIES WITH NATIONAL MAP ACCURACY STANDARDS
FOR SALE BY U.S. GEOLOGICAL SURVEY, DENVER 25, COLORADO OR WASHINGTON 25, D.C.
A FOLDER DESCRIBING TOPOGRAPHIC MAPS AND SYMBOLS IS AVAILABLE ON REQUEST

AMS 6336 11 NE-SERIES V882