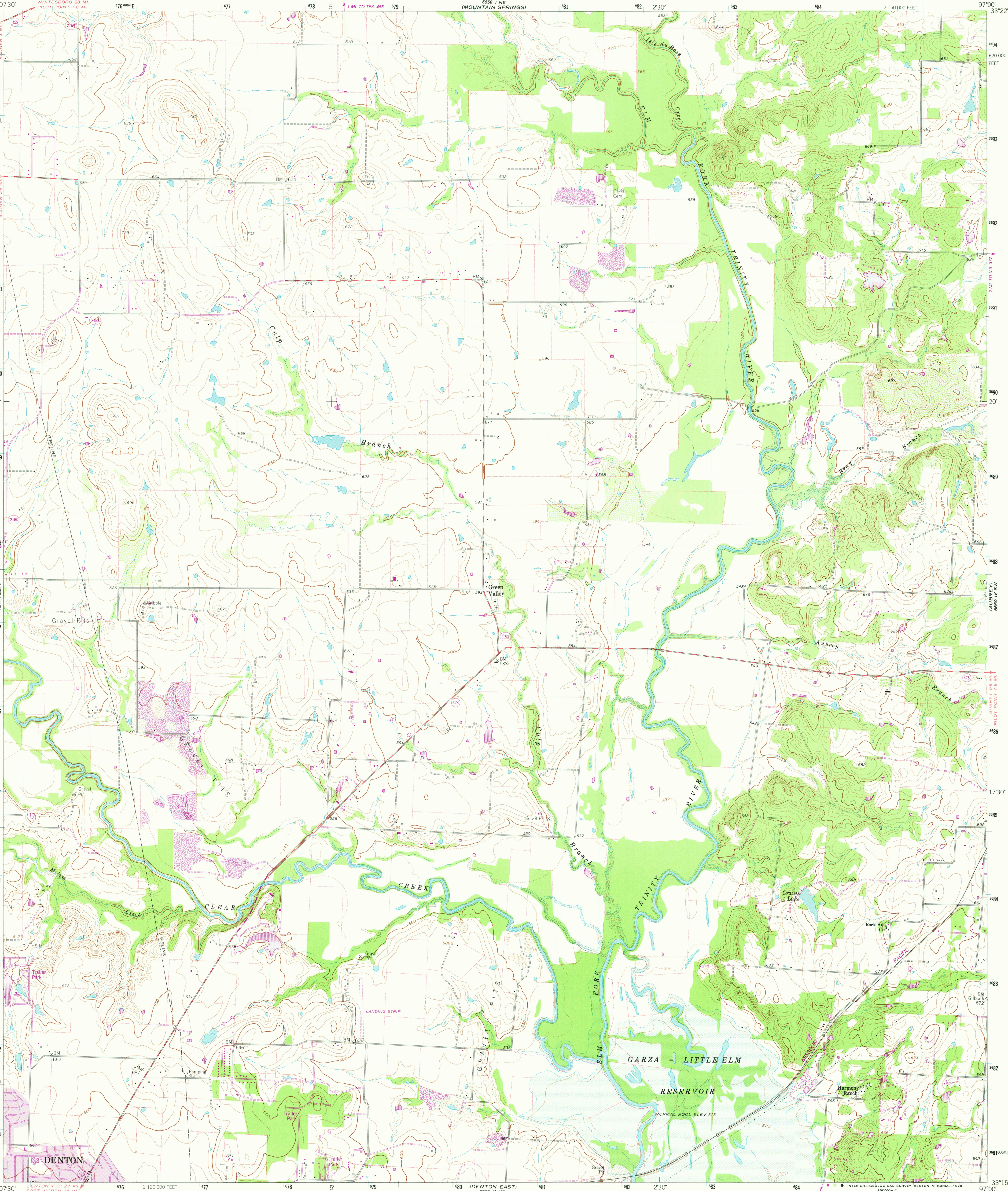


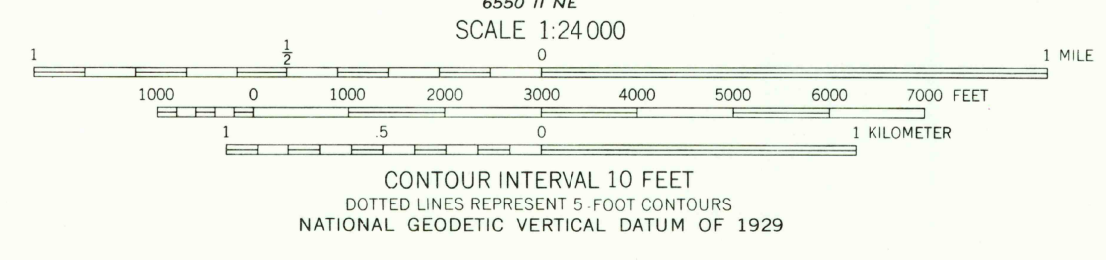
UNITED STATES  
DEPARTMENT OF THE INTERIOR  
GEOLOGICAL SURVEY

GREEN VALLEY QUADRANGLE  
TEXAS-DENTON CO  
7.5 MINUTE SERIES (TOPOGRAPHIC)



Mapped, edited, and published by the Geological Survey  
Control by USGS and USC&GS  
Topography from aerial photographs by photogrammetric methods  
Aerial photographs taken 1957. Field check 1960  
Polyconic projection. 1927 North American datum  
10,000 foot grid based on Texas coordinate system,  
north central zone  
1000 meter Universal Transverse Mercator grid ticks,  
zone 14, shown in blue  
Fine red dashed lines indicate selected fence and field lines  
where generally visible on aerial photographs  
This information is unchecked  
Area covered by dashed light-blue pattern is subject  
to controlled inundation to 532 feet

UTM GRID AND 1978 MAGNETIC NORTH  
DECLINATION AT CENTER OF SHEET  
71° 5' 13" N  
1° 04' 19" E  
Revisions shown in purple compiled from aerial  
photographs taken 1976. This information not  
field checked. Map edited 1978  
Purple tint indicates extension of urban areas



ROAD CLASSIFICATION  
Medium-duty ——— Light-duty ———  
Unimproved dirt ———  
State Route —○—

GREEN VALLEY, TEX.  
N3315-W9700/7.5  
1960  
PHOTO-REVISED 1978  
AMS 6550 I SE-SERIES V882

JAN 05 1979

3397-141