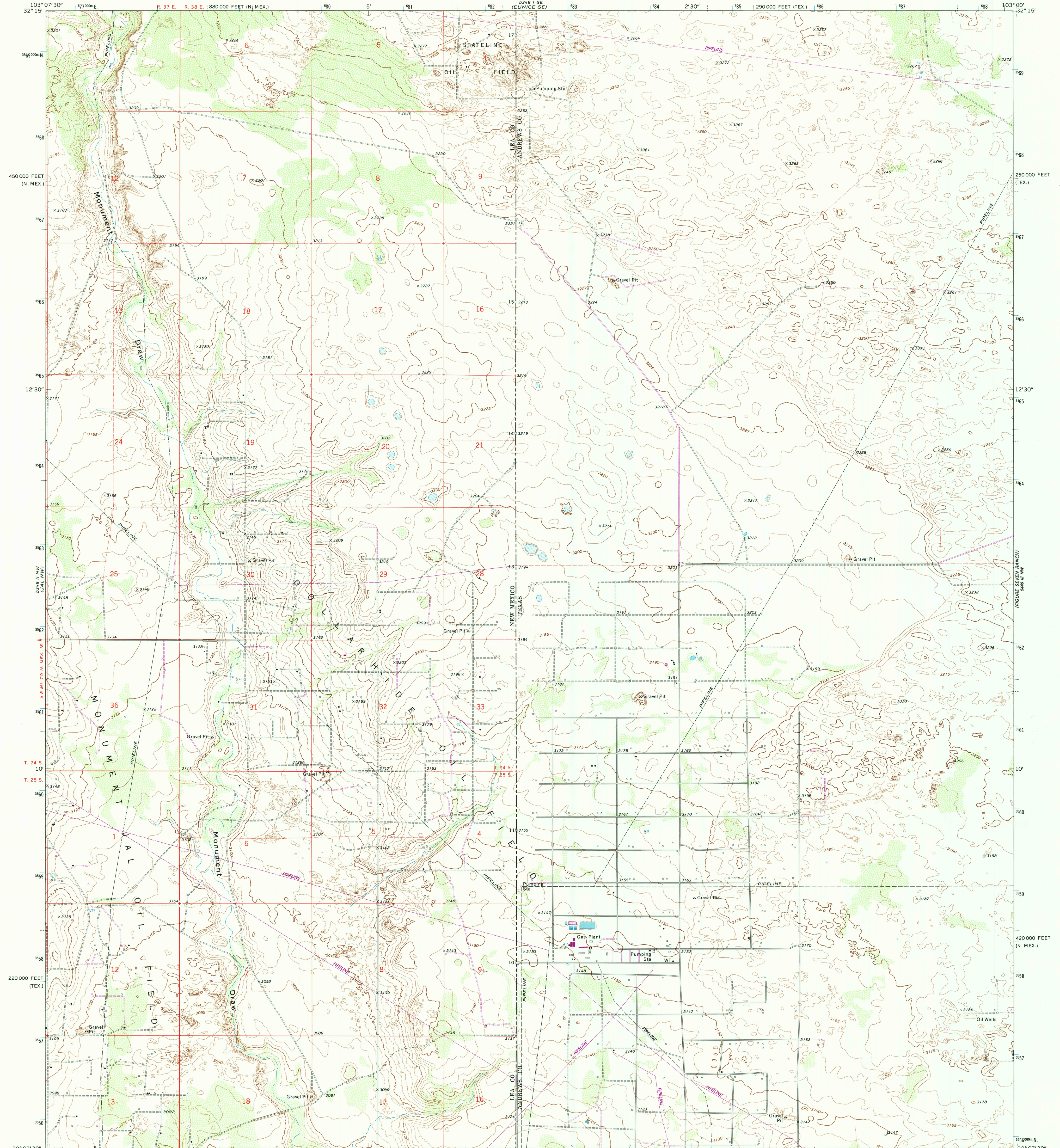


STATE OF TEXAS
COUNTY OF DALLAS

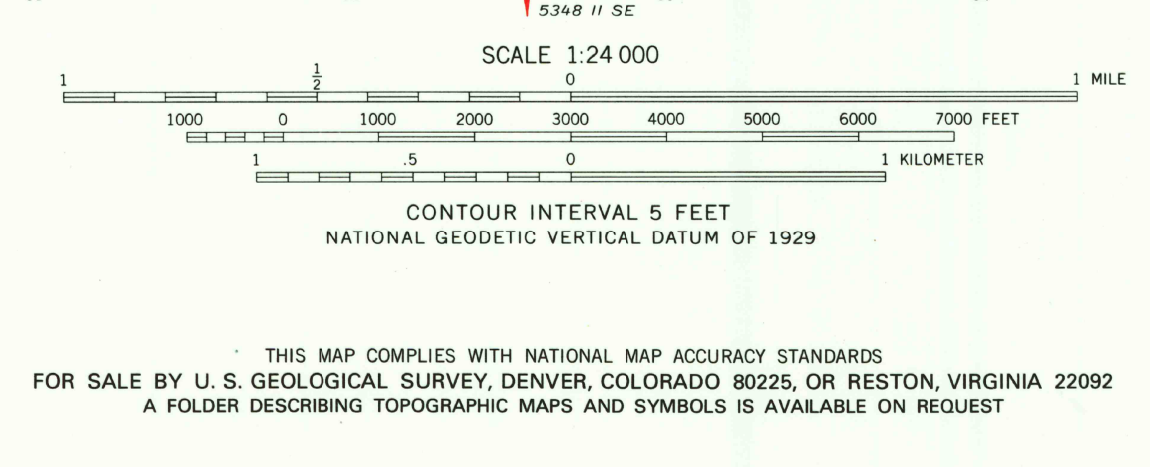
UNITED STATES
DEPARTMENT OF THE INTERIOR
GEOLOGICAL SURVEY

JAL NE QUADRANGLE
TEXAS-NEW MEXICO
7.5 MINUTE SERIES (TOPOGRAPHIC)

STATE OF NEW MEXICO
COUNTY OF SAGUARO



Mapped, edited, and published by the Geological Survey
Control by USGS and NOS/NOAA
Topography by photogrammetric methods from aerial
photographs taken 1968. Field checked 1969
Polyconic projection. 1927 North American Datum
10,000-foot grids based on Texas coordinate system,
north central zone and New Mexico coordinate system, east zone
1000-meter Universal Transverse Mercator grid ticks,
zone 13, shown in blue
Fine red dashed lines indicate selected fence lines
Revisions shown in purple compiled from aerial photographs
taken 1977 and other source data. This information not
field checked. Map edited 1979.
To place on the predicted North American Datum 1983
move the projection lines 10 meters south and
43 meters east as shown by dashed corner ticks



ROAD CLASSIFICATION
Light-duty road, all weather, improved surface
Unimproved road, fair or dry weather

TEXAS
QUADRANGLE LOCATION
3203-114

USGS NMD RESEARCH
DEC 12 1985
REFERENCE COLLECTION

JAL NE, TEX.-N. MEX.
32103-B1-TF-024
1969
PHOTOREVISED 1979
DMA 5348 II NE-SERIES V881