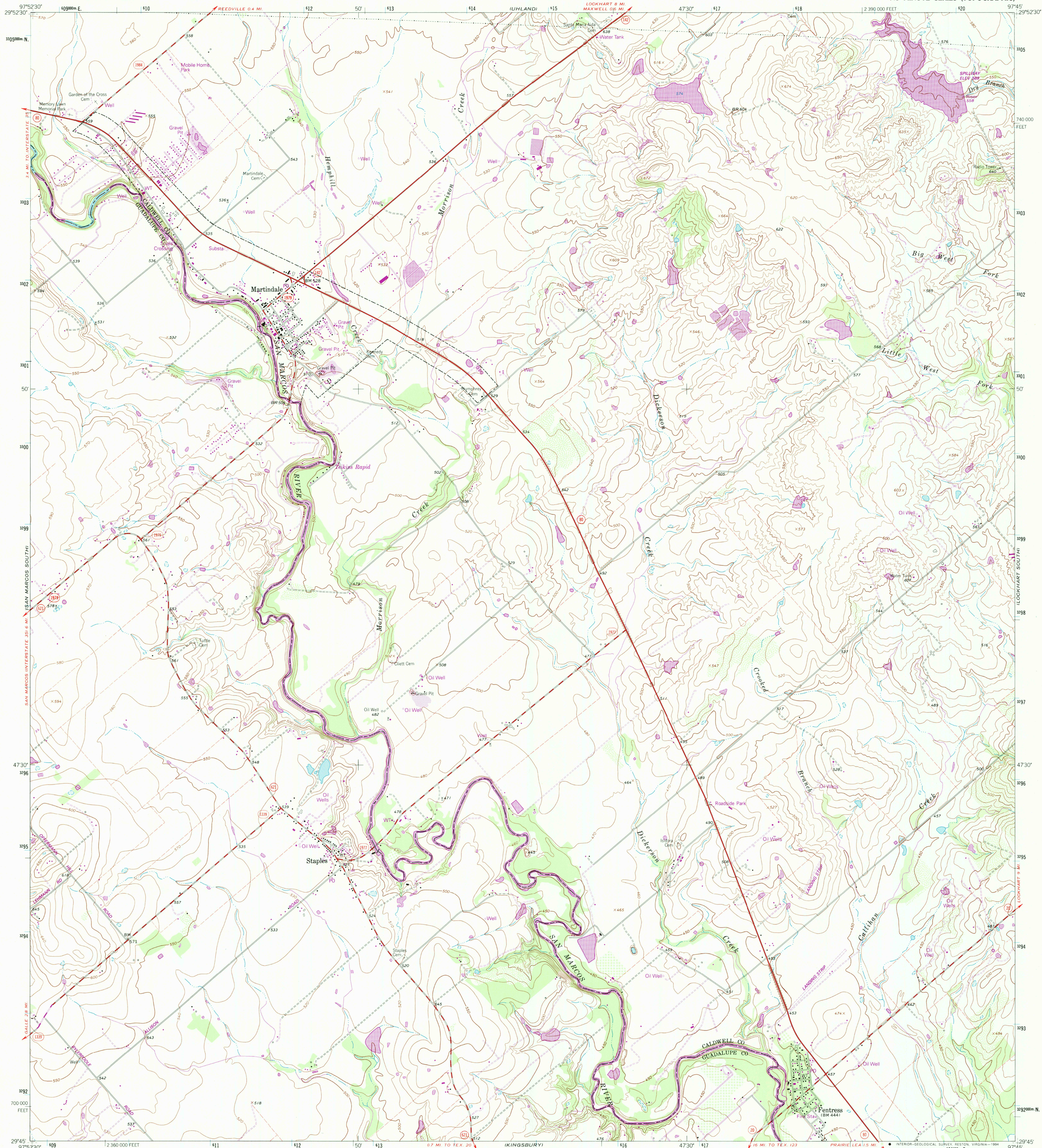


UNITED STATES
DEPARTMENT OF THE INTERIOR
GEOLOGICAL SURVEY

MARTINDALE QUADRANGLE
TEXAS
7.5 MINUTE SERIES (TOPOGRAPHIC)



Produced by the United States Geological Survey
Control by USGS, NOS/NOAA and USCE
Compiled by the Defense Mapping Agency from aerial photographs
taken 1958. Revisions shown in purple and woodland compiled from
aerial photographs taken 1986 and other sources and have been field
checked. Map edited 1994. Conflicts may exist between some updated
features and previously mapped contours.
North American Datum of 1927 (NAD 27). Projection and
1000-foot ticks: Texas Coordinate System, south central zone
(Lambert Conformal Conic)
Blue 1000-meter Universal Transverse Mercator ticks, zone 14
North American Datum of 1983 (NAD 83) is shown by dashed
corner ticks. The values of the shift between NAD 27 and NAD 83
for 7.5-minute intersections are obtainable from National Geodetic
Survey NADCON software.
Fine red dashed lines indicate selected fence lines

UTM GRID AND 1984 MAGNETIC NORTH
DECLINATION AT CENTER OF SHEET

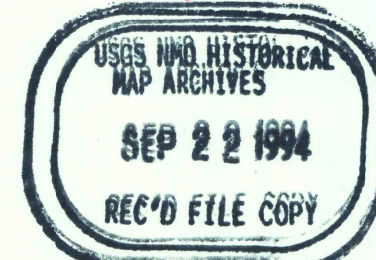
SCALE 1:24 000
1 000 0 1000 2000 3000 4000 5000 6000 7000 FEET
1 KILOMETER
CONTOUR INTERVAL 10 FEET
NATIONAL GEODETIC VERTICAL DATUM OF 1929

THIS MAP COMPLIES WITH NATIONAL MAP ACCURACY STANDARDS
FOR SALE BY U. S. GEOLOGICAL SURVEY, DENVER, COLORADO 80225, OR RESTON, VIRGINIA 22092
A FOLDER DESCRIBING TOPOGRAPHIC MAPS AND SYMBOLS IS AVAILABLE ON REQUEST



2997-331

ROAD CLASSIFICATION
Primary highway, hard surface
Secondary highway, hard surface
Interstate Route
Light-duty road, hard or improved surface
Unimproved road
U. S. Route
State Route



MARTINDALE, TEX.
29097-G7-TF-024
1964
REVISED 1994
DMA 6443 IV SE-SERIES V882