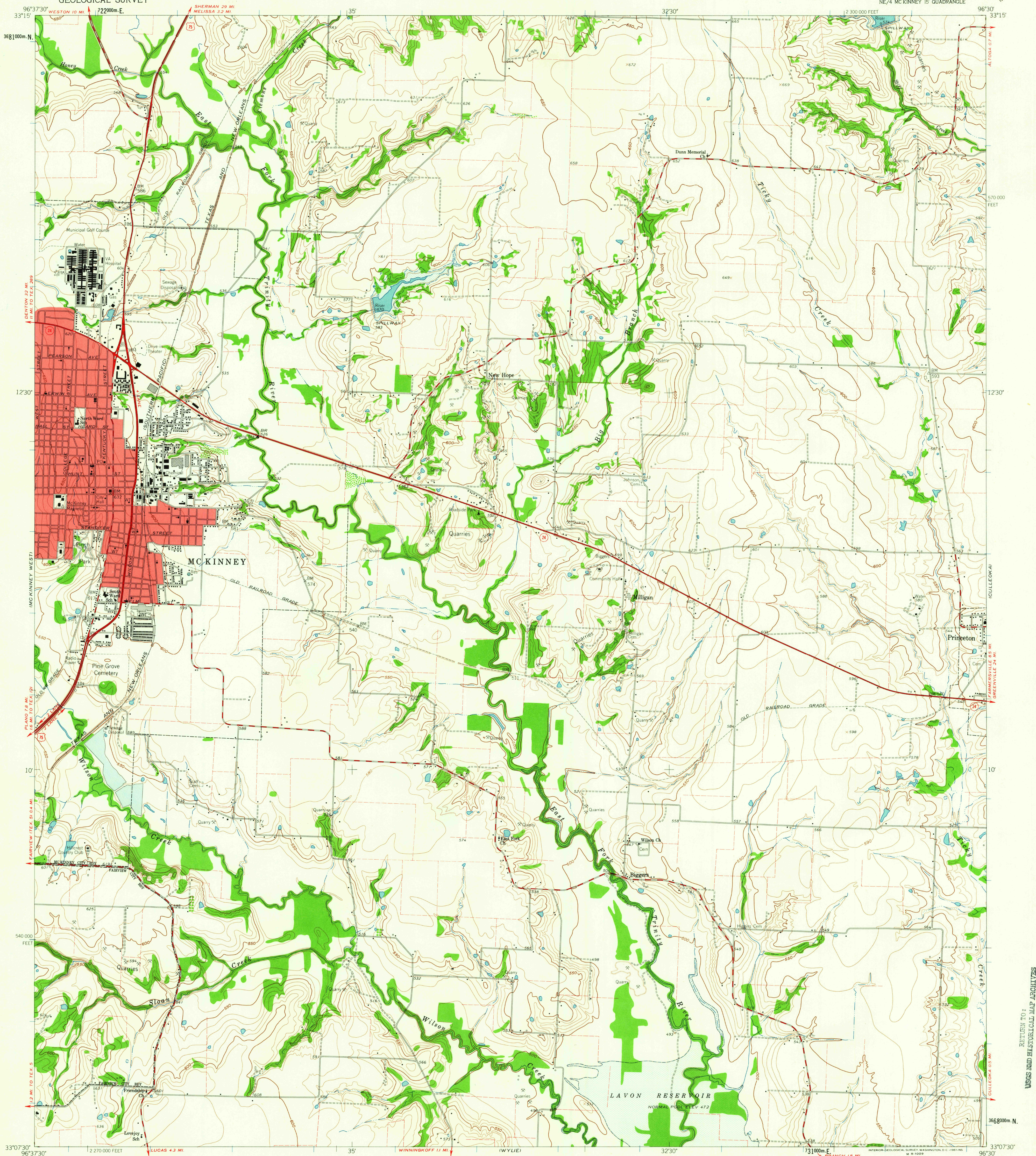


UNITED STATES
DEPARTMENT OF THE INTERIOR
GEOLOGICAL SURVEY

MC KINNEY EAST QUADRANGLE
TEXAS-COLLIN CO.
7.5 MINUTE SERIES (TOPOGRAPHIC)
NE/4 MC KINNEY 15' QUADRANGLE



Mapped, edited, and published by the Geological Survey
Control by USGS and USC&GS
Topography from aerial photographs by photogrammetric methods
Aerial photographs taken 1957. Field check 1960
Polyconic projection. 1927 North American datum
10,000-foot grid based on Texas coordinate system,
north central zone
1000-meter Universal Transverse Mercator grid ticks,
zone 14, shown in blue
Fine red dashed lines indicate selected fence and field lines
where generally visible on aerial photographs
This information is unchecked
Red tint indicates area in which only landmark buildings are shown
Areas of Lavon Reservoir covered by dashed light-blue pattern are
subject to controlled inundation to 490 feet

TRUE NORTH
MAGNETIC NORTH
APPROXIMATE MEAN
DECLINATION, 1960

SCALE 1:24,000
1 0 1000 2000 3000 4000 5000 6000 7000 FEET
1 0 1 2 3 4 5 6 7 8 9 10 KILOMETER
CONTOUR INTERVAL 10 FEET
DATUM IS MEAN SEA LEVEL



ROAD CLASSIFICATION
Heavy-duty ——— Light-duty ———
Medium-duty ——— Unimproved dirt ———
U.S. Route ——— State Route ———

MC KINNEY EAST, TEX.
NE/4 MC KINNEY 15' QUADRANGLE
N33075-W9630/7.5

U.S.G.S.
FILE COPY
TOPOGRAPHIC DIVISION

1960

RETURN TO:
USGS AND HISTORICAL MAP ARCHIVES

JAN 24 1982
2705