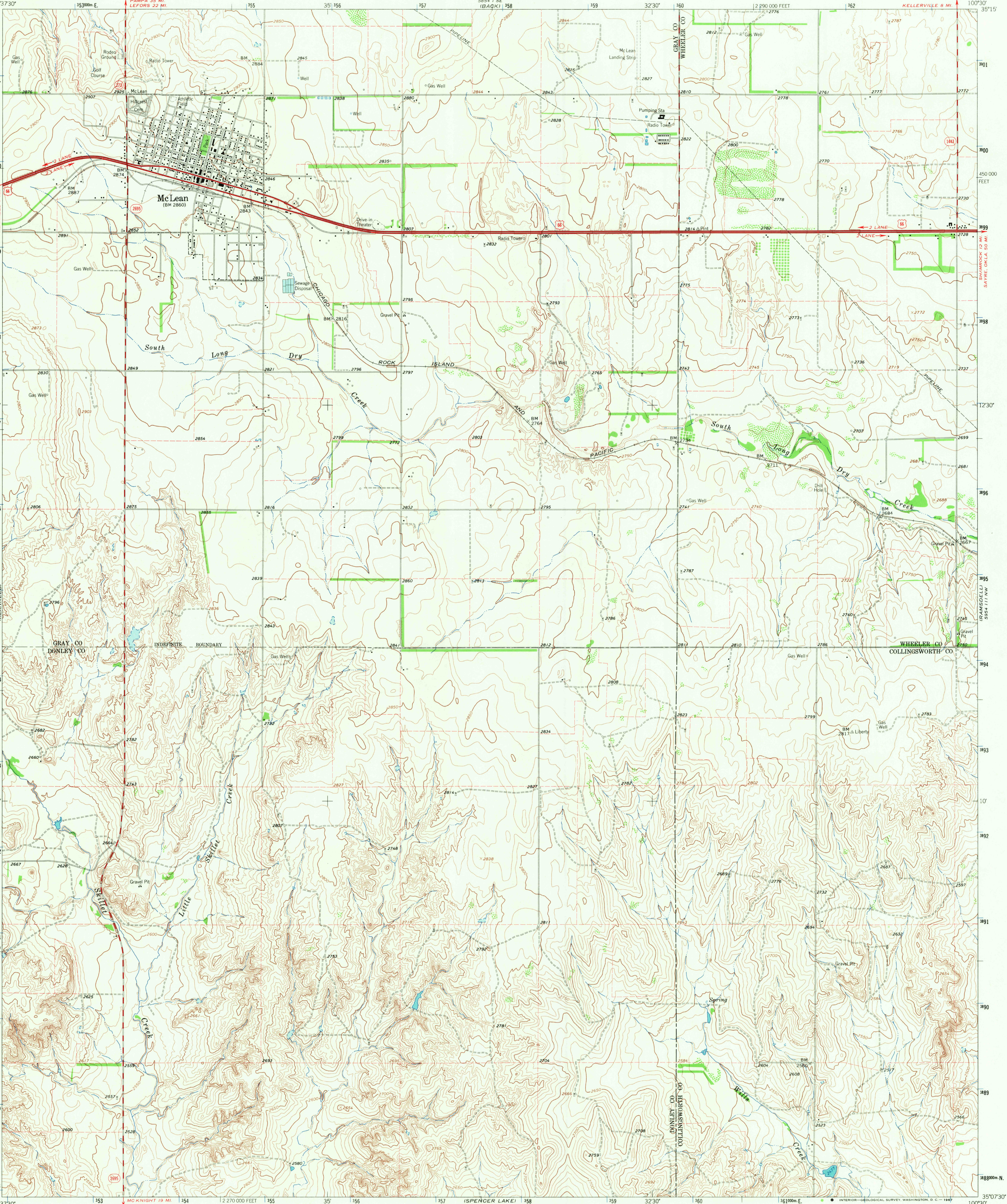
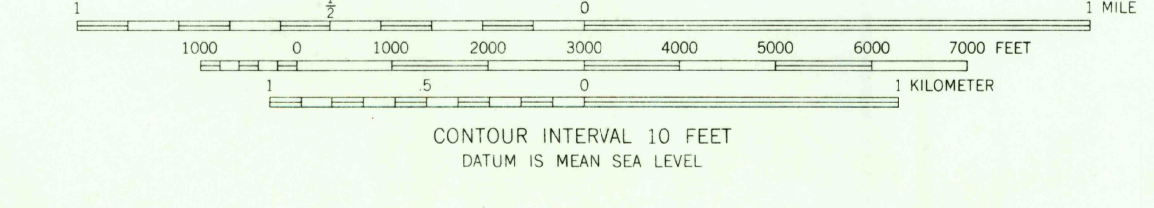
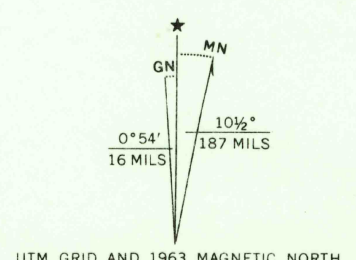


UNITED STATES  
DEPARTMENT OF THE INTERIOR  
GEOLOGICAL SURVEY

MC LEAN QUADRANGLE  
TEXAS  
7.5 MINUTE SERIES (TOPOGRAPHIC)



Maped, edited, and published by the Geological Survey  
Control by USGS and USC&GS  
Topography by photogrammetric methods from aerial  
photographs taken 1962. Field checked 1963  
Polyconic projection. 1927 North American datum  
10,000 foot grid based on Texas coordinate system, north zone  
1000-meter Universal Transverse Mercator grid ticks,  
zone 14, shown in blue  
Fine red dashed lines indicate selected fence lines



ROAD CLASSIFICATION	
Heavy-duty	Light-duty
Medium-duty	Unimproved dirt
U.S. Route	State Route

U.S.G.S.  
FILE COPY  
TOPOGRAPHIC DIVISION

MC LEAN, TEX.  
N3507.5-W10030/7.5  
1963  
AMS 5854 11 NE-SERIES V882

RETURN TO:  
USGS AND HISTORICAL MAP ARCHIVES

MAY 19 1967  
3250