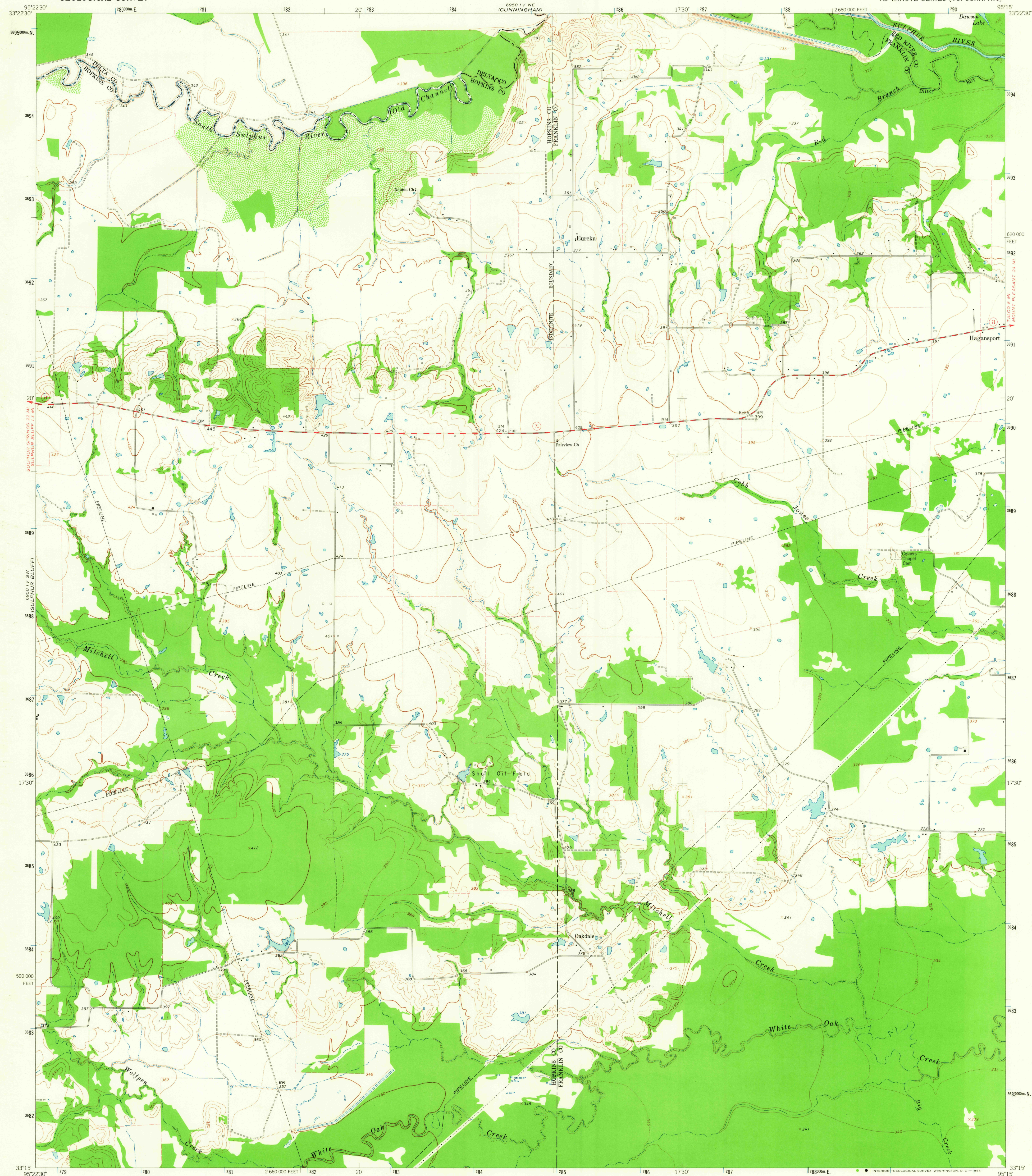


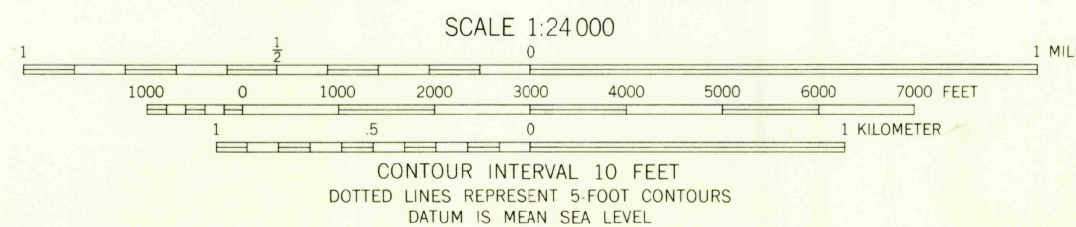
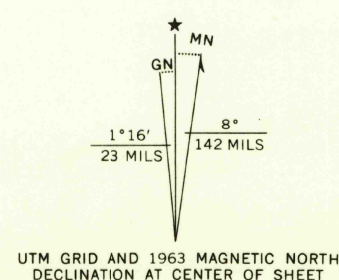
6950 IV NE  
WINTER

UNITED STATES  
DEPARTMENT OF THE INTERIOR  
GEOLOGICAL SURVEY

MITCHELL CREEK QUADRANGLE  
TEXAS  
7.5 MINUTE SERIES (TOPOGRAPHIC)



Mapped, edited, and published by the Geological Survey  
Control by USGS and USC&GS  
Topography by photogrammetric methods from aerial  
photographs taken 1961. Field checked 1963  
Polyconic projection. 1927 North American datum  
10 000-foot grid based on Texas coordinate system, north central zone  
1000-meter Universal Transverse Mercator grid ticks,  
zone 15, shown in blue  
Fine red dashed lines indicate selected fence lines



ROAD CLASSIFICATION  
Medium-duty — Light-duty —  
Unimproved dirt —  
State Route

NOV 23 1964

THIS MAP COMPLIES WITH NATIONAL MAP ACCURACY STANDARDS  
FOR SALE BY U.S. GEOLOGICAL SURVEY, DENVER 25, COLORADO OR WASHINGTON 25, D.C.  
A FOLDER DESCRIBING TOPOGRAPHIC MAPS AND SYMBOLS IS AVAILABLE ON REQUEST

U.S.G.S.  
FILE COPY  
TOPOGRAPHIC DIVISION

MITCHELL CREEK, TEX.  
N3315-W9515/7.5  
1963  
AMS 6950 IV SE-SERIES V882

RETURN TO:  
USGS AND HISTORICAL MAP ARCHIVES