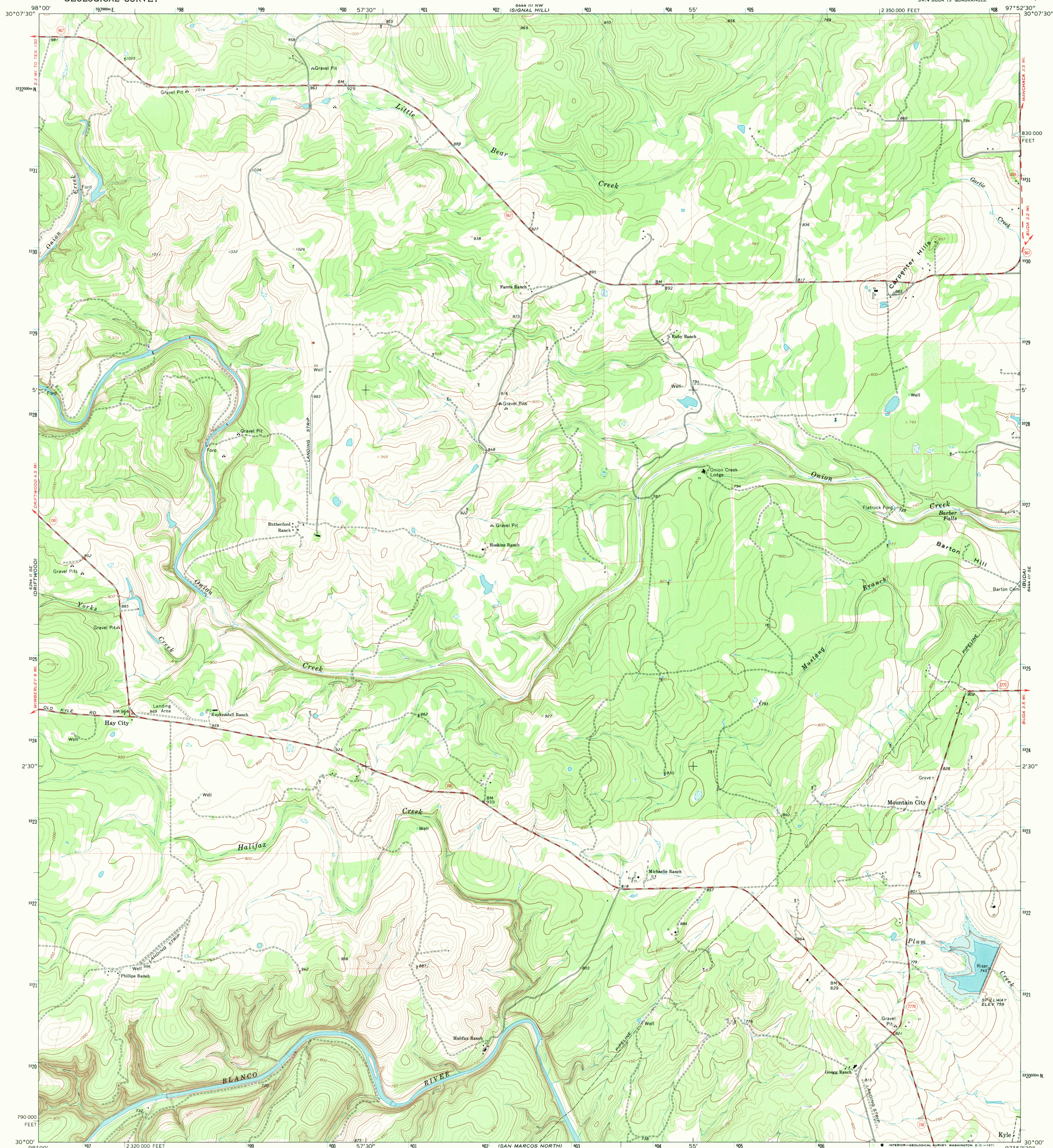
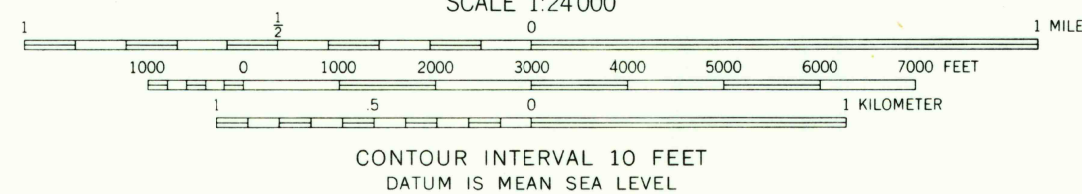
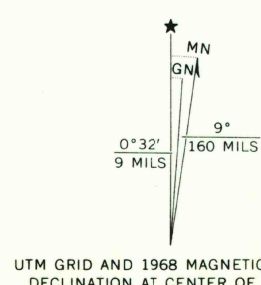


UNITED STATES
DEPARTMENT OF THE INTERIOR
GEOLOGICAL SURVEY

MOUNTAIN CITY QUADRANGLE
TEXAS—HAYS CO.
7.5 MINUTE SERIES (TOPOGRAPHIC)
SW 1/4 BUDA 15' QUADRANGLE



Mapped, edited, and published by the Geological Survey
Control by USGS and USC&GS
Topography by photogrammetric methods from aerial
photographs taken 1967. Field checked 1968
Polyconic projection. 1927 North American datum
10,000-foot grid based on Texas coordinate system,
south central zone
1000-meter Universal Transverse Mercator grid ticks,
zone 14, shown in blue
Fine red dashed lines indicate selected fence lines
Areas covered by dashed light-blue pattern are subject
to controlled inundation



THIS MAP COMPLIES WITH NATIONAL MAP ACCURACY STANDARDS
FOR SALE BY U. S. GEOLOGICAL SURVEY, DENVER, COLORADO 80225, OR WASHINGTON, D. C. 20242
A FOLDER DESCRIBING TOPOGRAPHIC MAPS AND SYMBOLS IS AVAILABLE ON REQUEST



U.S.G.S.
FILE COPY
TOPOGRAPHIC DIVISION

MOUNTAIN CITY, TEX.
SW 1/4 BUDA 15' QUADRANGLE
N3000—W9752.5/7.5

1968
AMS 6444 III SW—SERIES V882

MAY 21 1971