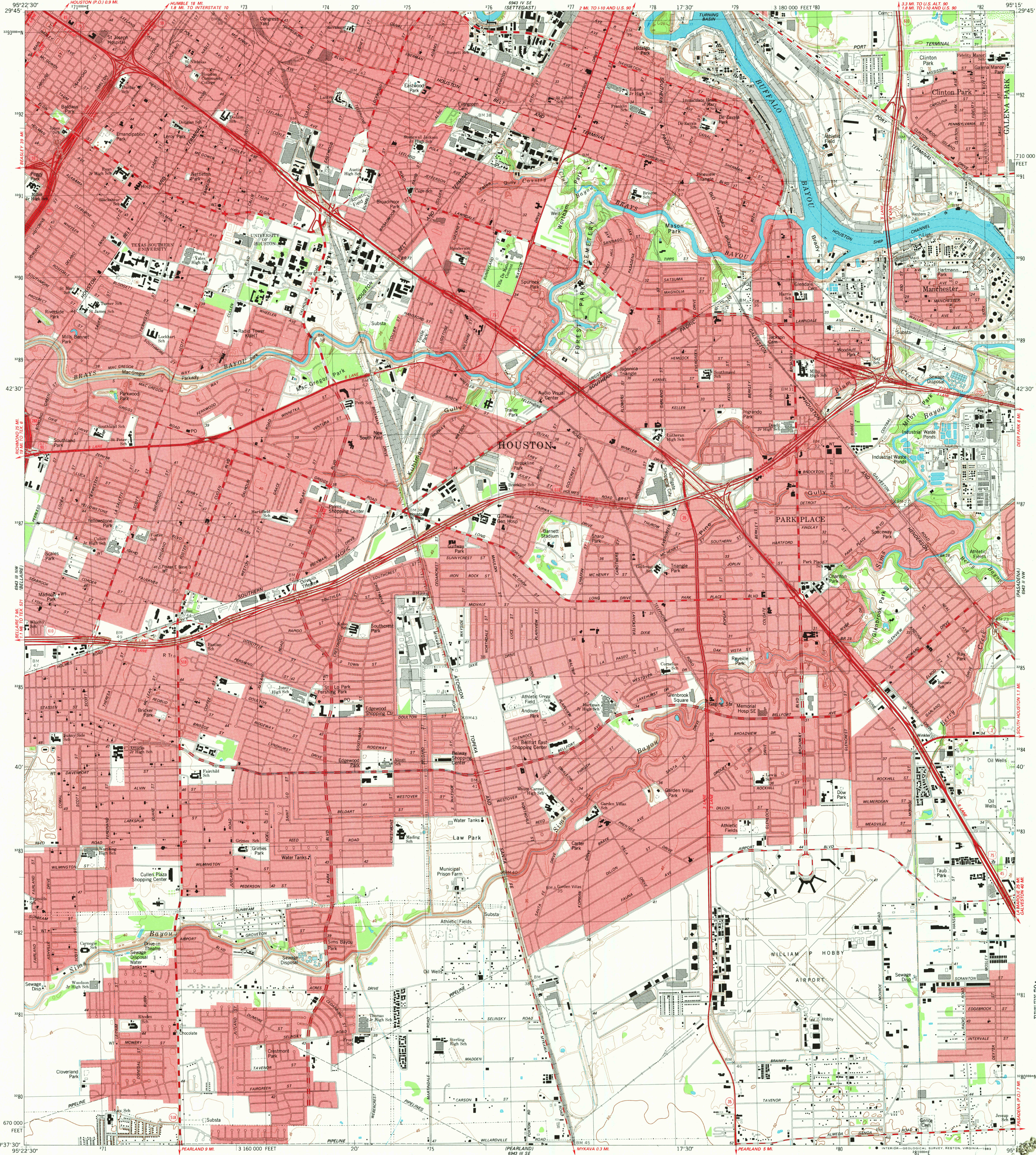


UNITED STATES
DEPARTMENT OF THE INTERIOR
GEOLOGICAL SURVEY

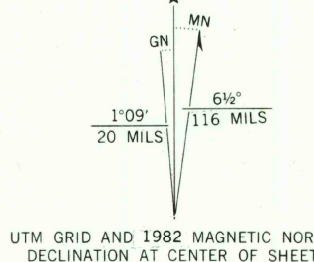
PARK PLACE QUADRANGLE
TEXAS-HARRIS CO.
7.5 MINUTE SERIES (TOPOGRAPHIC)



Mapped, edited, and published by the Geological Survey
Control by USGS and NOS/NOAA

Topography by photogrammetric methods from aerial photographs
taken 1976. Field checked 1976. Map edited 1982
Selected hydrographic data compiled from NOS/NOAA Chart 11329 (1980)
This information not intended for navigational purposes

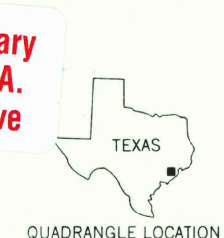
Projection and 10,000-foot grid ticks: Texas
coordinate system, south central zone (Lambert conformal conic)
1000-meter Universal Transverse Mercator grid, zone 15
1927 North American datum
To place on the predicted North American Datum 1983
move the projection lines 20 meters south and
22 meters east as shown by dashed corner ticks
Red tint indicates areas in which only landmark buildings are shown
A portion of this map lies within a subsidence area
Contouring based on 1973 adjustment of vertical control



SCALE 1:24 000
CONTOUR INTERVAL 5 FEET
NATIONAL GEODETIC VERTICAL DATUM OF 1929
SOUNDINGS IN FEET-GULF COAST LOW WATER DATUM
SHORELINE SHOWN REPRESENTS THE APPROXIMATE LINE OF MEAN HIGH WATER
THE MEAN RANGE OF TIDE IS NEGLIGIBLE

THIS MAP COMPLIES WITH NATIONAL MAP ACCURACY STANDARDS
FOR SALE BY U. S. GEOLOGICAL SURVEY, DENVER, COLORADO 80225, OR RESTON, VIRGINIA 22092
A FOLDER DESCRIBING TOPOGRAPHIC MAPS AND SYMBOLS IS AVAILABLE ON REQUEST

USGS Library
Reston, VA
Topo Archive



ROAD CLASSIFICATION
Primary highway, hard surface
Secondary highway, hard surface
Light-duty road, hard surface
Unimproved road
Interstate Route
U. S. Route
State Route

PARK PLACE, TEX.
N2937.5-W9515/7.5

1982
DMA 6943 III NE-SERIES V882

RETURN TO:
USGS AND HISTORICAL MAP ARCHIVES

2050