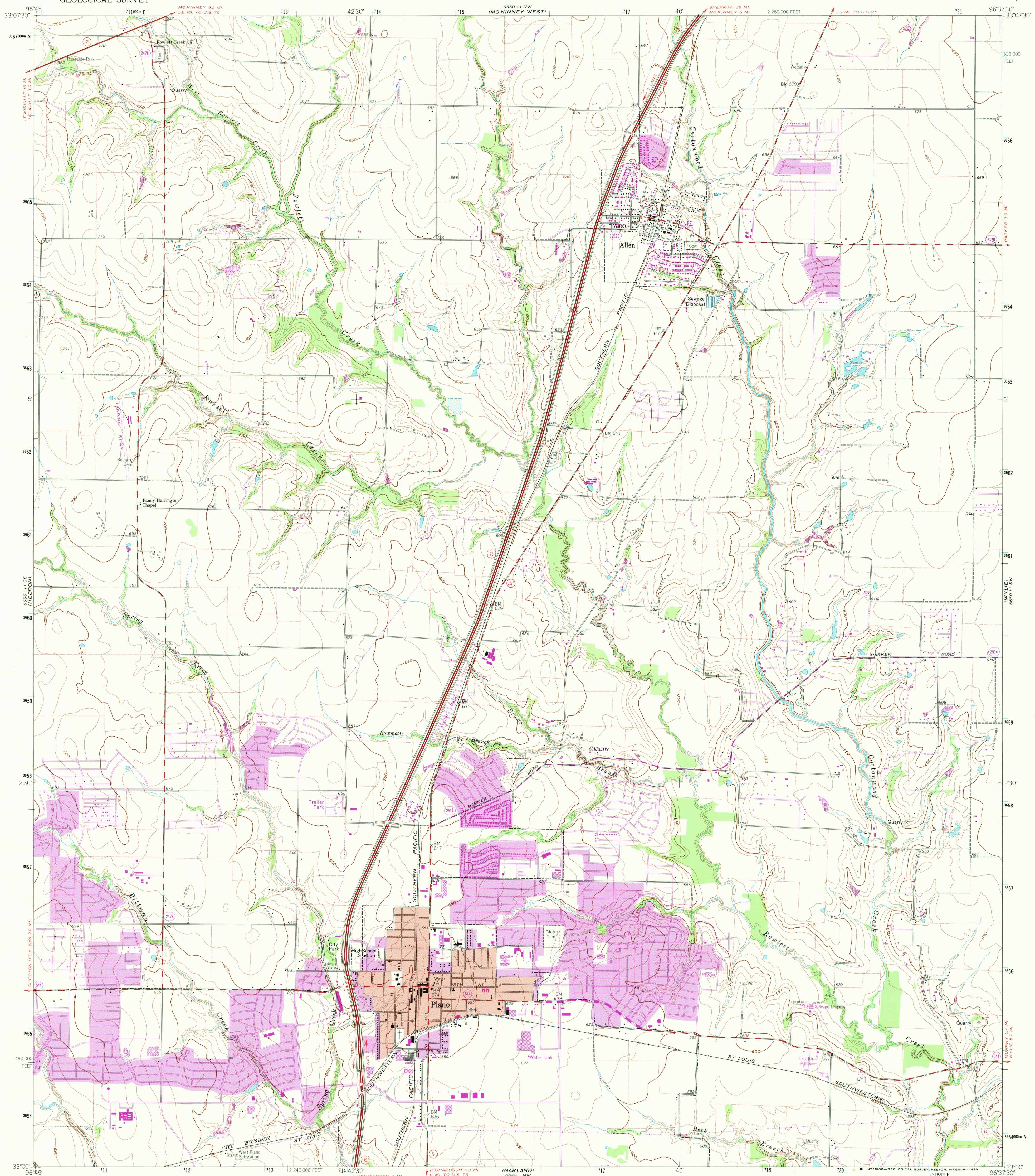


4850 11 NE
(FRISCO)

UNITED STATES
DEPARTMENT OF THE INTERIOR
GEOLOGICAL SURVEY

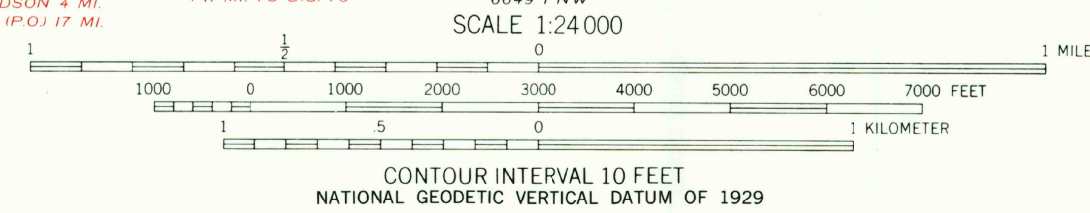
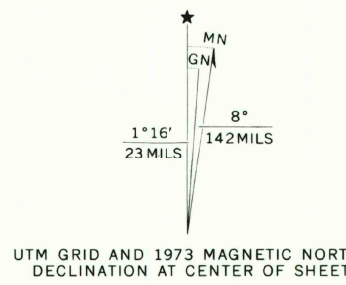
PLANO QUADRANGLE
TEXAS-COLLIN CO.
7.5 MINUTE SERIES (TOPOGRAPHIC)

850 11 NE
(MCKINNEY
EAST)



Mapped, edited, and published by the Geological Survey
Control by USGS and USC&GS
Topography from aerial photographs by photogrammetric methods
Aerial photographs taken 1957. Field check 1960
Polyconic projection. 1927 North American datum
10,000-foot grid based on Texas coordinate system,
north central zone
1000-meter Universal Transverse Mercator grid ticks,
zone 14, shown in blue
Red tint indicates area in which only landmark buildings are shown
Fine red dashed lines indicate selected fence and field lines
where generally visible on aerial photographs
This information is unchecked
To place on the predicted North American Datum 1983
move the projection lines 10 meters south and
26 meters east as shown by dashed corner ticks

Revisions shown in purple compiled from photographs
taken 1968 and 1973. This information not field checked
Purple tint indicates extension of urban areas

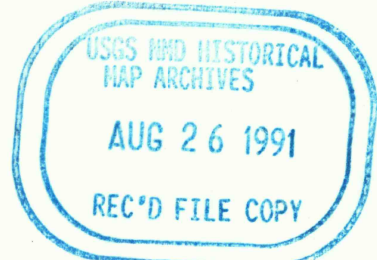


THIS MAP COMPLIES WITH NATIONAL MAP ACCURACY STANDARDS
FOR SALE BY U. S. GEOLOGICAL SURVEY, DENVER, COLORADO 80225, OR RESTON, VIRGINIA 22092
A FOLDER DESCRIBING TOPOGRAPHIC MAPS AND SYMBOLS IS AVAILABLE ON REQUEST



QUADRANGLE LOCATION

ROAD CLASSIFICATION
Heavy-duty ——— Light-duty ———
Medium-duty ——— Unimproved dirt ———
U.S. Route ——— State Route ———



PLANO, TEX.
N3300-W9637.5/7.5
1960
PHOTOREVISED 1968 AND 1973
DMA 6650 11 SW-SERIES V882