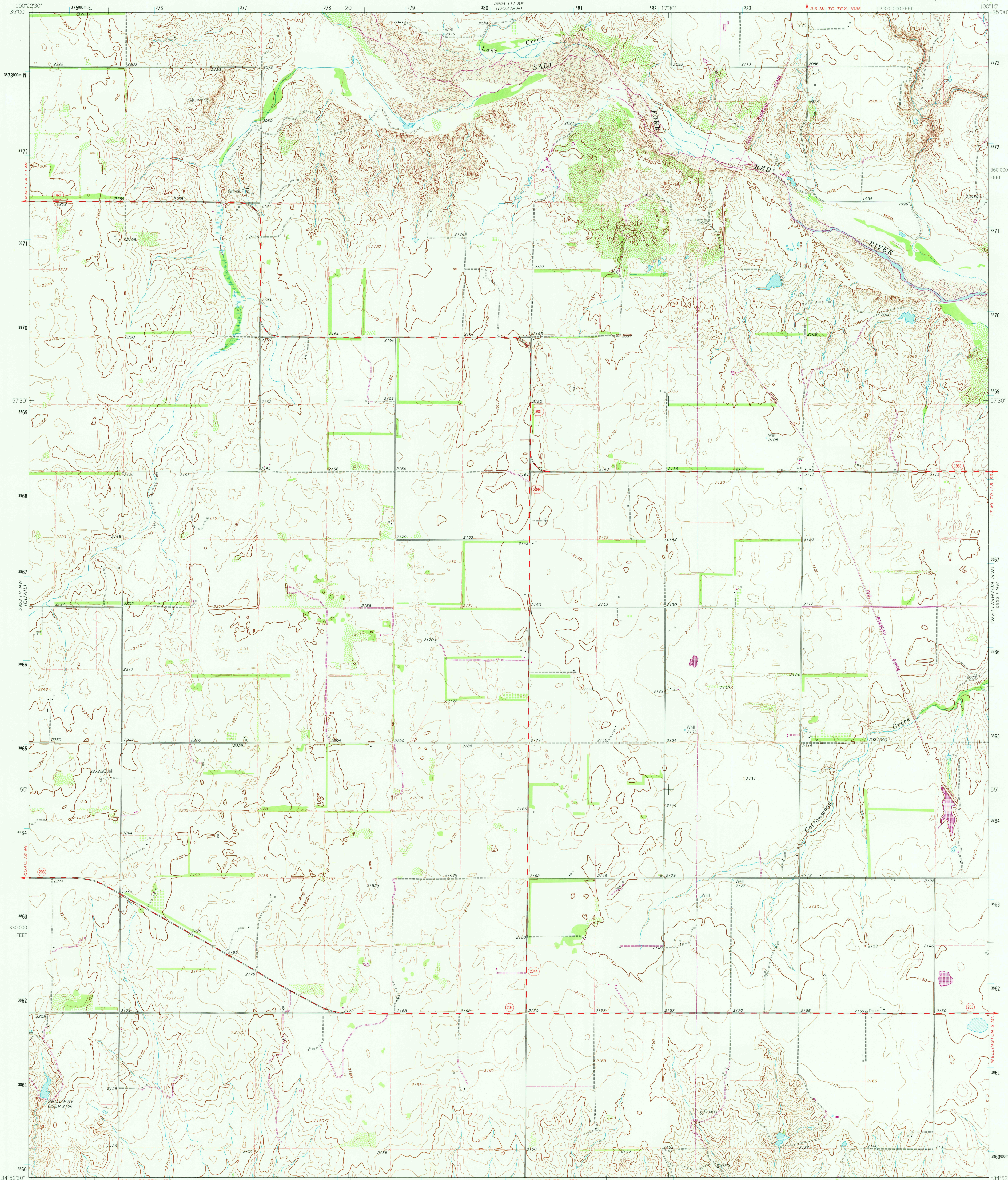


UNITED STATES  
DEPARTMENT OF THE INTERIOR  
GEOLOGICAL SURVEY

ROLLA NE QUADRANGLE  
TEXAS-COLLINGSWORTH CO.  
7.5 MINUTE SERIES (TOPOGRAPHIC)



Mapped, edited, and published by the Geological Survey

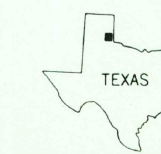
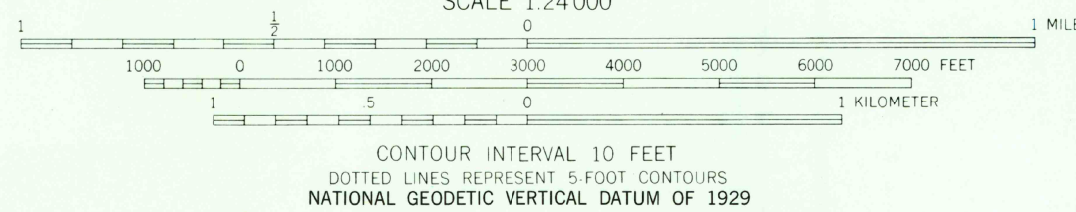
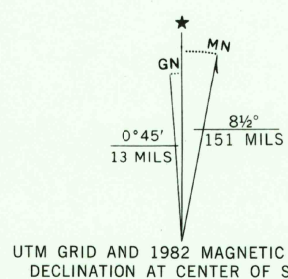
Control by USGS and NOS/NOAA

Topography by photogrammetric methods from aerial photographs taken 1962. Field checked 1964

Polyconic projection. 10,000-foot grid ticks based on Texas coordinate system, north zone. 1000-meter Universal Transverse Mercator grid ticks, zone 14, shown in blue. 1927 North American Datum. To place on the predicted North American Datum 1983 move the projection lines 2 meters south and 36 meters east as shown by dashed corner ticks

Fine red dashed lines indicate selected fence lines

Revisions shown in purple and woodland compiled from aerial photographs taken 1979 and other sources. This information not field checked. Map edited 1982



QUADRANGLE LOCATION

ROAD CLASSIFICATION  
Heavy-duty ——— Light-duty ———  
Unimproved dirt ———  
State Route ○

ROLLA NE, TEX.  
N3452.5-W10015.7 5

1964  
PHOTOREVISED 1982  
DMA 5953 IV NE-SERIES V682

OCT 22 1982

2109