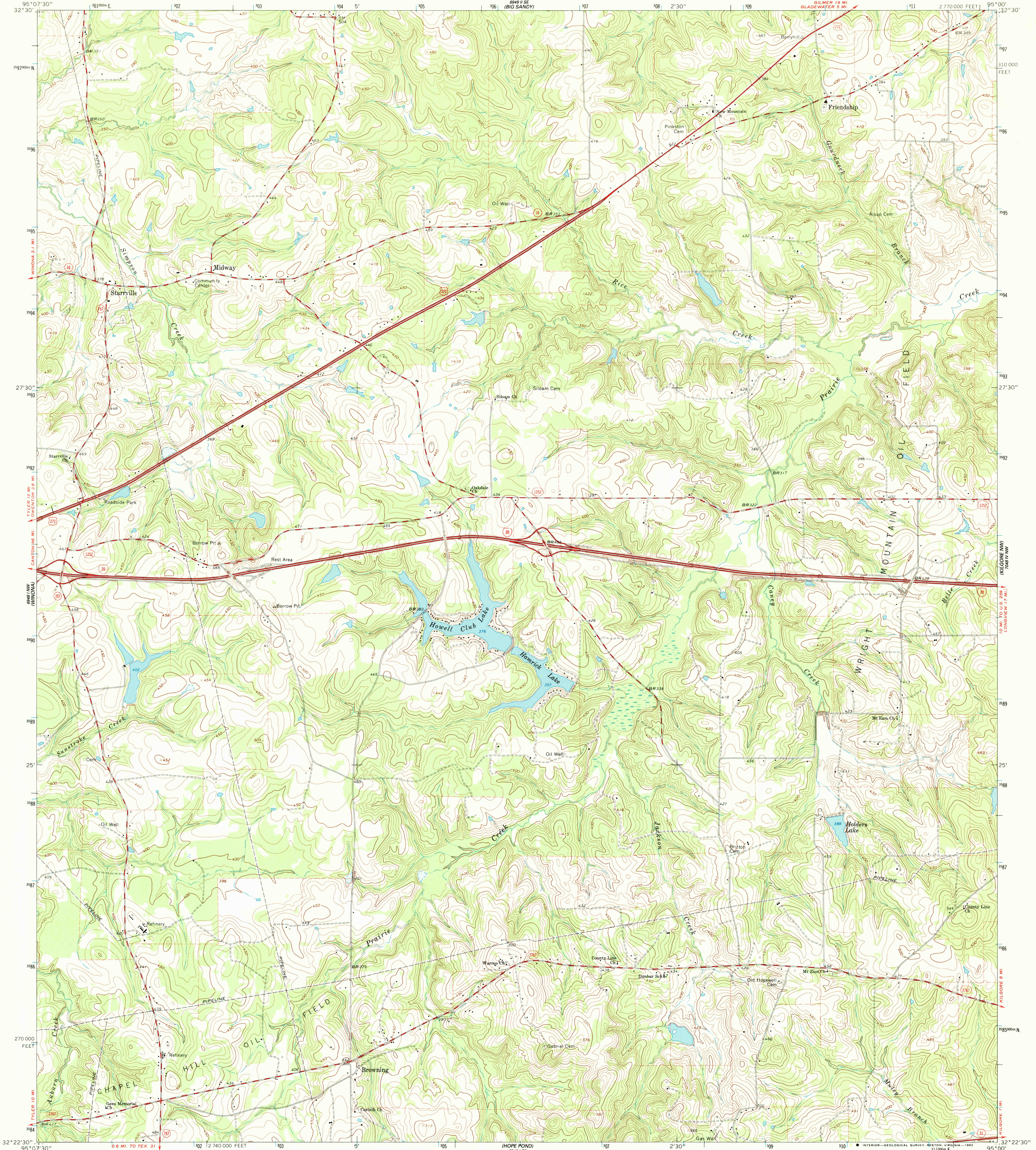


BR 351
HAWKINS

UNITED STATES
DEPARTMENT OF THE INTERIOR
GEOLOGICAL SURVEY

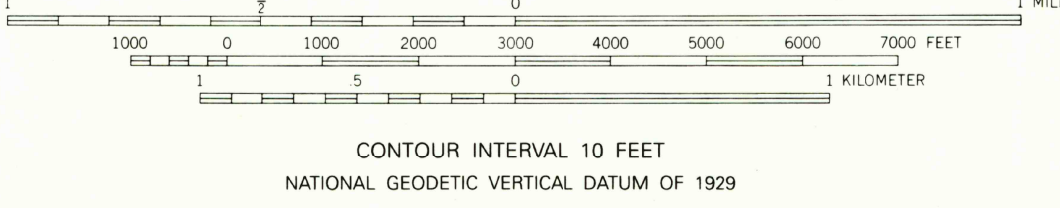
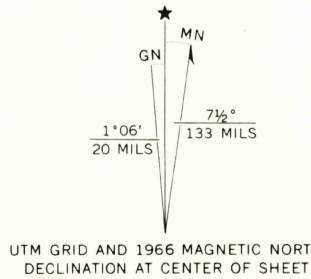
STARRVILLE QUADRANGLE
TEXAS-SMITH CO.
7.5 MINUTE SERIES (TOPOGRAPHIC)

BR 351
GLADEWATER



BR 351
HAWKINS

Mapped, edited, and published by the Geological Survey
Control by USGS and NOS/NOAA
Topography by photogrammetric methods from aerial photographs
taken 1965. Field checked 1966
Polyconic projection. 1927 North American Datum
10,000-foot grid based on Texas coordinate system,
north central zone
1000-meter Universal Transverse Mercator grid ticks, zone 15,
shown in blue
The difference between 1927 North American Datum and North
American Datum of 1983 (NAD 83) for 7.5 minute intersections is
given in USGS Bulletin 1875. The NAD 83 is shown by dashed
corner ticks
Fine red dashed lines indicate selected fence lines

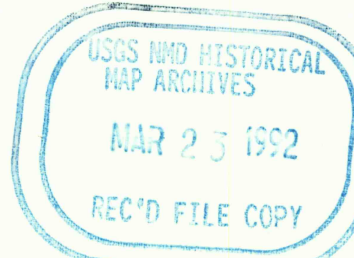


THIS MAP COMPLIES WITH NATIONAL MAP ACCURACY STANDARDS
FOR SALE BY U.S. GEOLOGICAL SURVEY
DENVER, COLORADO 80225, OR RESTON, VIRGINIA 22092
A FOLDER DESCRIBING TOPOGRAPHIC MAPS AND SYMBOLS IS AVAILABLE ON REQUEST



QUADRANGLE LOCATION

ROAD CLASSIFICATION	
Heavy duty	Light duty
Medium duty	Unimproved dirt
Interstate Route	U. S. Route
	State Route



STARRVILLE, TEX.

32095-D1-TF-024

1966

DMA 6948 1 NE-SERIES V882

3295-144