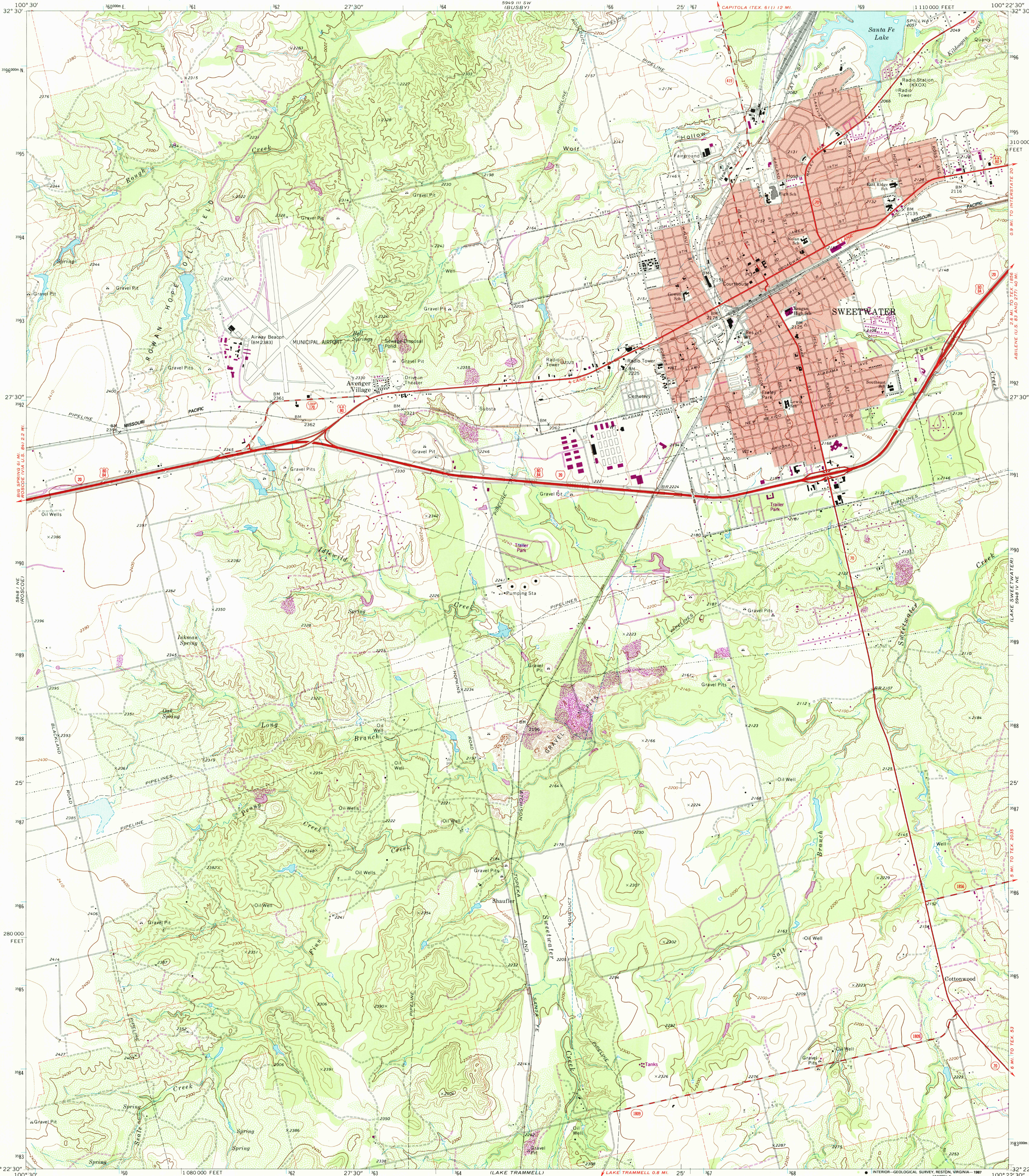


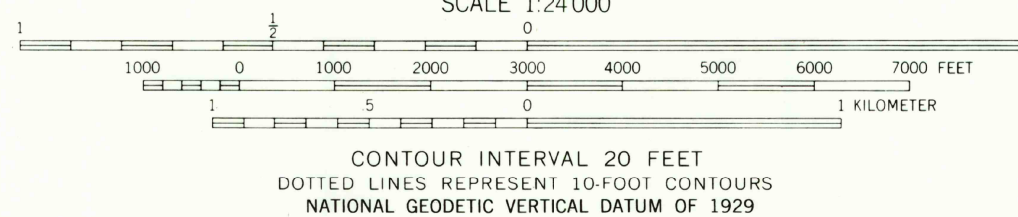
UNITED STATES
DEPARTMENT OF THE INTERIOR
GEOLOGICAL SURVEY

SWEETWATER QUADRANGLE
TEXAS—NOLAN CO.
7.5 MINUTE SERIES (TOPOGRAPHIC)



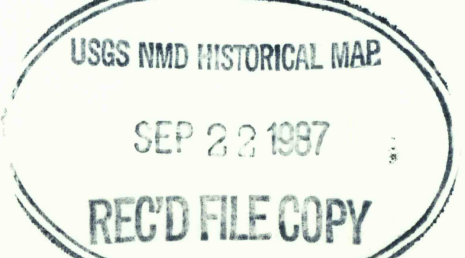
Mapped, edited, and published by the Geological Survey
Control by USGS and USC&GS
Topography by photogrammetric methods from aerial
photographs taken 1966. Field checked 1969
Polyconic projection. 1927 North American datum
10,000-foot grid based on Texas coordinate system,
north central zone
1000-meter Universal Transverse Mercator grid ticks,
zone 14, shown in blue
Red tint indicates areas in which only landmark buildings are shown
Fine red dashed lines indicate selected fence lines
To place on the predicted North American Datum 1983,
move the projection lines 10 meters south and
36 meters east as shown by dashed corner ticks

Revisions shown in purple compiled from aerial
photographs taken 1985 and other sources
This information not field checked. Map edited 1987



3200-133

ROAD CLASSIFICATION	
Primary highway, hard surface	Light-duty road, hard or improved surface
Secondary highway, hard surface	Unimproved road
Interstate Route	U. S. Route
	State Route



SWEETWATER, TEX.
32100-D4-TF-024
1969
PHOTOREVISED 1987
DMA 5948 IV NW-SERIES V882