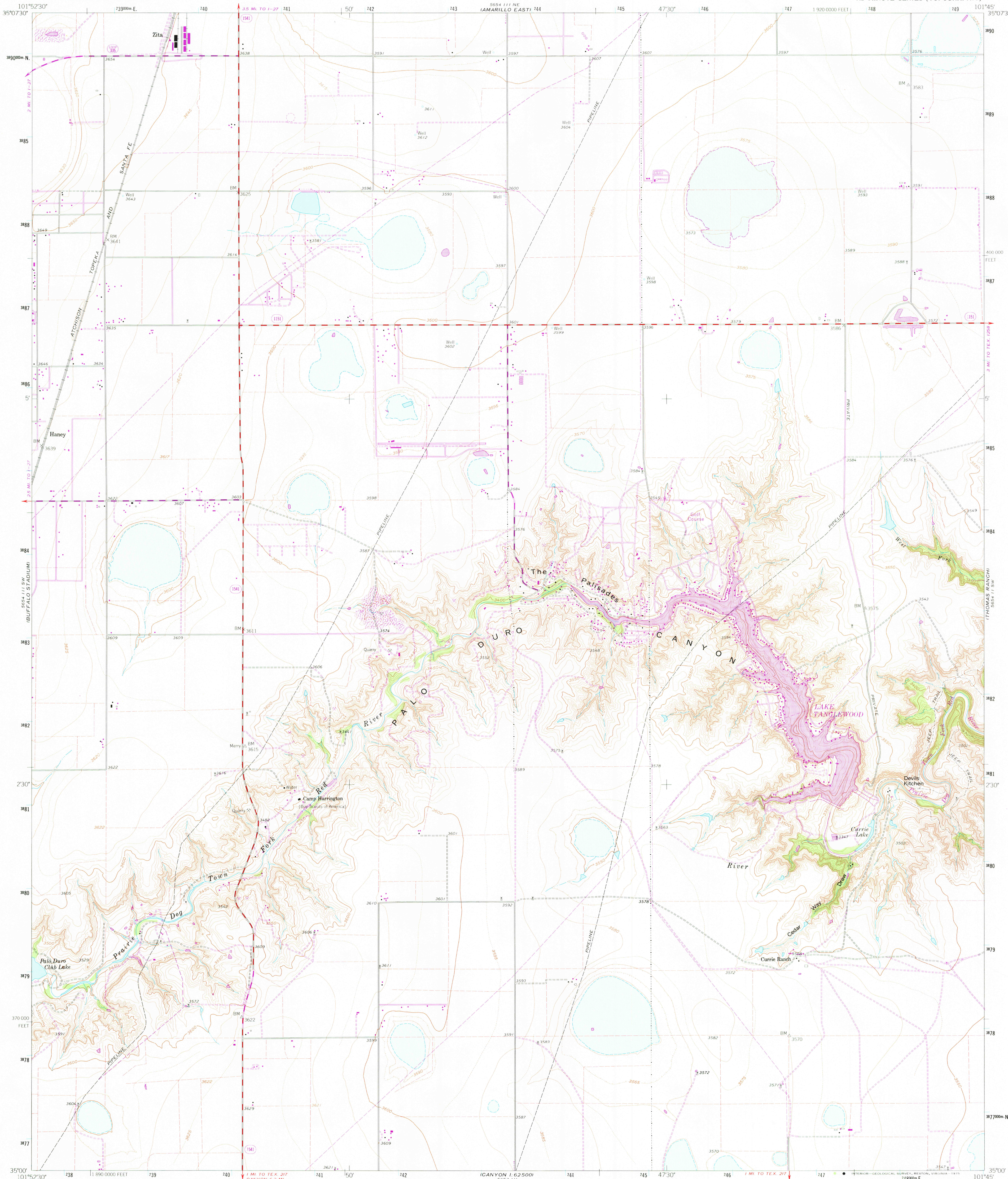


5654 III NE (AMARILLO WEST)

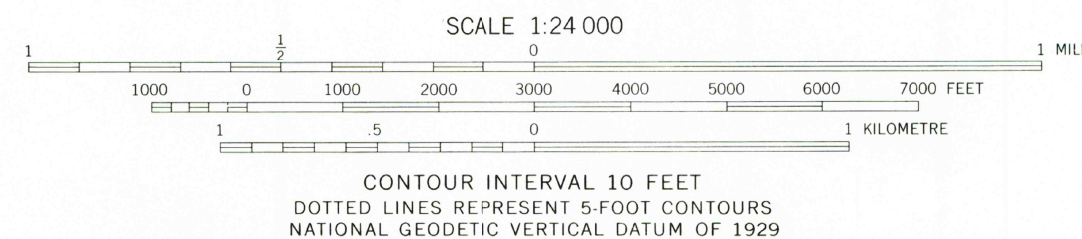
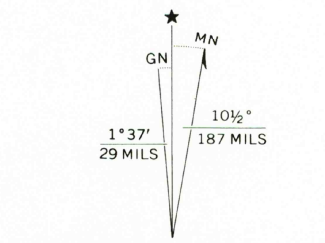
UNITED STATES
DEPARTMENT OF THE INTERIOR
GEOLOGICAL SURVEY

THE PALISADES QUADRANGLE
TEXAS-RANDALL CO.
7.5 MINUTE SERIES (TOPOGRAPHIC)

5654 III NW (PULLMAN)



Mapped, edited, and published by the Geological Survey
Control by USGS and NOS/NOAA
Topography by photogrammetric methods from aerial photographs
taken 1953. Field checked 1960
Polyconic projection. 1927 North American datum
10,000-foot grid based on Texas coordinate system,
north zone
1000 metre Universal Transverse Mercator grid ticks,
zone 14, shown in blue
Fine red dashed lines indicate selected fence lines
Revisions shown in purple compiled from aerial photographs
taken 1967 and 1973. This information not field checked



THIS MAP COMPLIES WITH NATIONAL MAP ACCURACY STANDARDS
FOR SALE BY U. S. GEOLOGICAL SURVEY, DENVER, COLORADO 80225, OR RESTON, VIRGINIA 22092
A FOLDER DESCRIBING TOPOGRAPHIC MAPS AND SYMBOLS IS AVAILABLE ON REQUEST



ROAD CLASSIFICATION
Primary highway, hard surface
Secondary highway, hard surface
Interstate Route
U. S. Route
State Route
Light-duty road, hard or improved surface
Unimproved road

USGS
HISTORICAL FILE
TOPOGRAPHIC DIVISION

THE PALISADES, TEX.
N3500-W10145/7.5
1960
PHOTOREVISED 1967 AND 1973
AMS 5654 III SE-SERIES V882

JUN 9 1975

2900