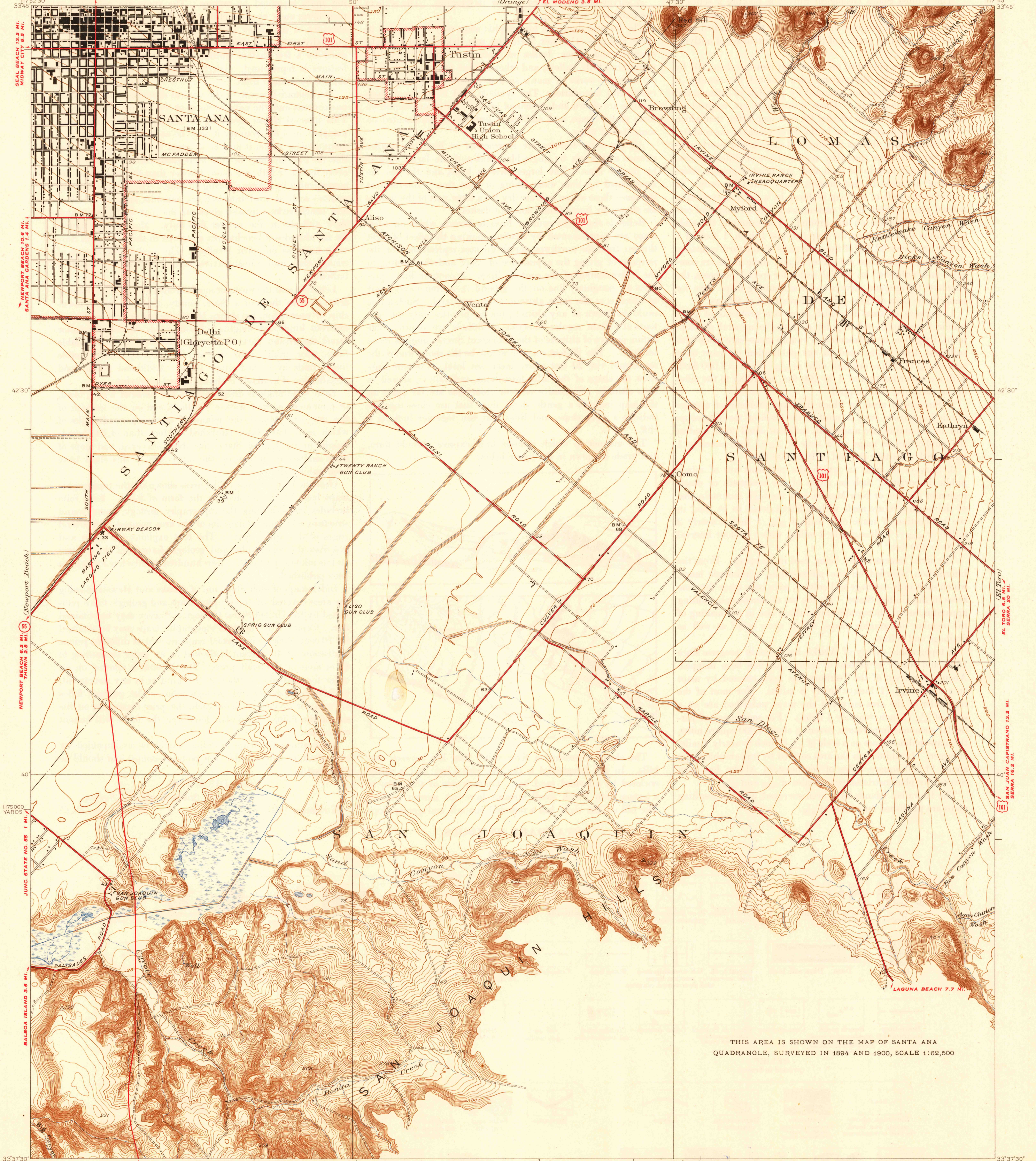


LOS ANGELES (CIVIC CENTER) 35 MI.
ANAHEIM 9.8 MI.
UNITED STATES
DEPARTMENT OF THE INTERIOR
GEOLOGICAL SURVEY

STATE OF CALIFORNIA
REPRESENTED BY THE
DIRECTOR OF PUBLIC WORKS

CALIFORNIA
(ORANGE COUNTY)
TUSTIN QUADRANGLE

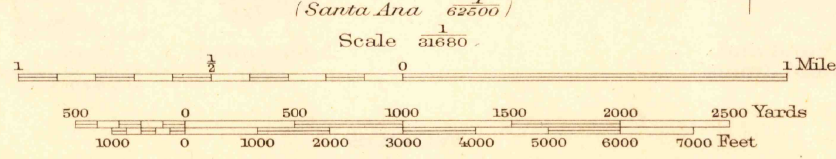
ANAHEIM 9.8 MI. (55)
ORANGE 3.7 MI.
(Orange)
EL MODENO 3.5 MI.



THIS AREA IS SHOWN ON THE MAP OF SANTA ANA
QUADRANGLE, SURVEYED IN 1894 AND 1900, SCALE 1:62,500

Topography by R.R. Monbeck and W.B. Upton, Jr.
Surveyed in 1932
CORONA DEL MAR 1.3 MI.
LAGUNA BEACH 7.7 MI.

TRUE NORTH
MAGNETIC NORTH
APPROXIMATE MEAN
DECLINATION, 1932



U.S.G.S.
FILE COPY
Inspection and Editing.

USGS
Historical File
Topographic Division

ROUTES USUALLY TRAVELED
HARD IMPERVIOUS SURFACES
OTHER SURFACE IMPROVEMENTS
U.S. ROUTE 1945 STATE ROUTE

Polyconic projection, 1927 North American datum
5000 yard grid based upon U.S. zone system G

TUSTIN, CALIF.
Edition of 1935
reprinted 1945
N3337.6-W11748.75