

(NEVADA CITY)

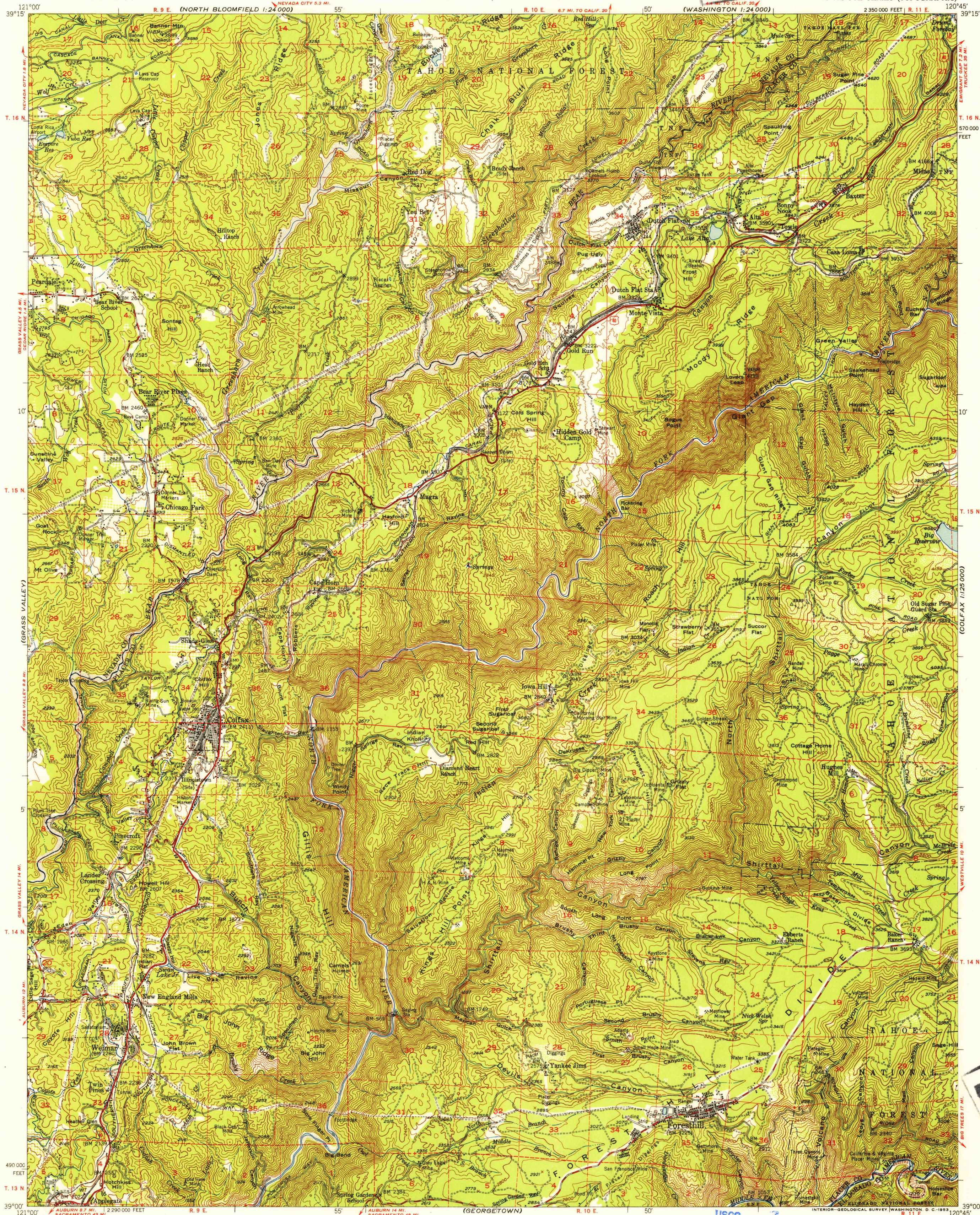
UNITED STATES  
DEPARTMENT OF THE INTERIOR  
GEOLOGICAL SURVEY

STATE OF CALIFORNIA  
EARL WARREN, GOVERNOR  
FRANK B. DURKEE, DIRECTOR OF PUBLIC WORKS  
A. D. EDMONSTON, STATE ENGINEER

FILE COPY  
Inspection and Editing

COLFAX QUADRANGLE  
CALIFORNIA  
15 MINUTE SERIES (TOPOGRAPHIC)

(COLFAX 1:250,000)

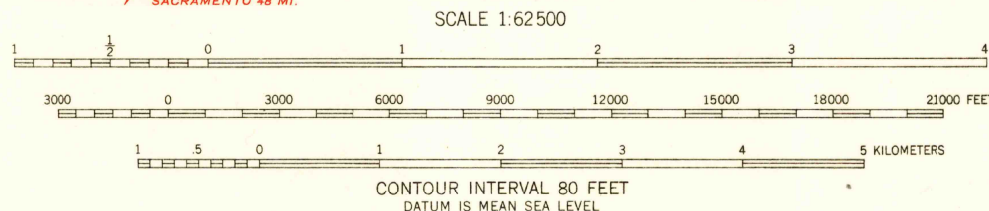


FILE COPY  
Inspection and Editing

NOV 10 1953

Mapped, edited, and published by the Geological Survey  
Control by USGS and USC&GS  
Topography from aerial photographs by multiplex methods  
Aerial photographs taken 1946. Field check, 1949-50  
Polyconic projection. 1927 North American datum  
10,000-foot grid based on California coordinate system, Zone 2  
Dashed land lines indicate approximate locations  
Unchecked elevations are shown in brown

TRUE NORTH  
MAGNETIC NORTH  
APPROXIMATE MEAN  
DECLINATION, 1950



USGS  
Historical File  
Topographic Division

ROAD CLASSIFICATION  
Heavy-duty — 4 LANE 16 LANE Light-duty —  
Medium-duty — 4 LANE 16 LANE Unimproved dirt —  
U.S. Route State Route



COLFAX, CALIF.  
N3900-W12045/15  
1950

THIS MAP COMPLIES WITH NATIONAL MAP ACCURACY STANDARDS  
FOR SALE BY U.S. GEOLOGICAL SURVEY, FEDERAL CENTER, DENVER, COLORADO OR WASHINGTON 25, D. C.  
A FOLDER DESCRIBING TOPOGRAPHIC MAPS AND SYMBOLS IS AVAILABLE ON REQUEST