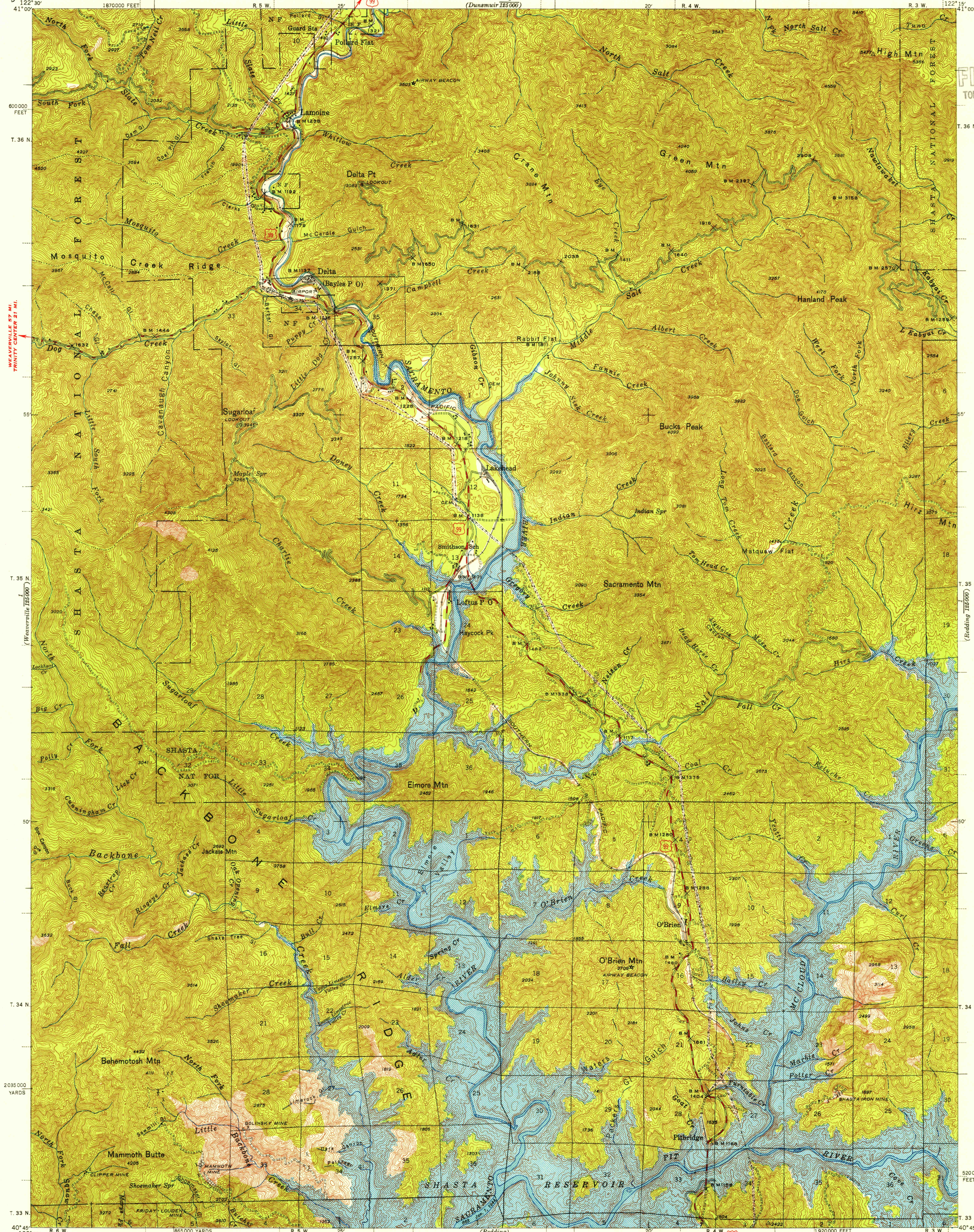


UNITED STATES
DEPARTMENT OF THE INTERIOR
GEOLOGICAL SURVEY

CALIFORNIA
(SHASTA COUNTY)
LAMOINE QUADRANGLE
15-MINUTE SERIES

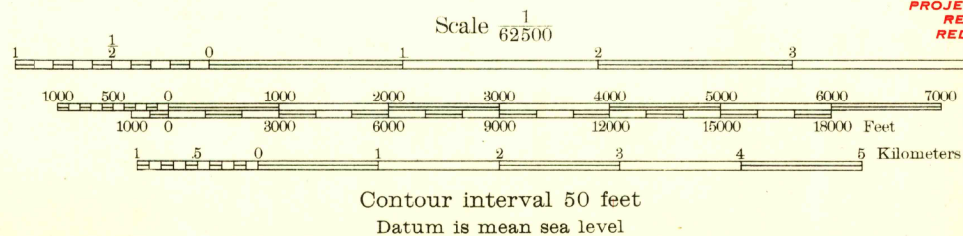
U.S.G.S.
FILE COPY
TOPOGRAPHIC DIVISION



Mapped by the Geological Survey
1943-1944

Boundaries of the Shasta National
Forest are approximate only.

TRUE NORTH
MAGNETIC NORTH
APPROXIMATE MEAN
DECLINATION, 1944



PROJECT CITY 5.4 MI.
REDDING 12.5 MI.
RED BLUFF 4.4 MI.

Certain land lines are omitted
because of insufficient data.
All recovered corners are shown.

ROAD CLASSIFICATION
1946

Dependable hard surface
heavy-duty road
Secondary hard surface
all weather road
Dirt road

Dry weather roads
Loose surface graded
Unsurfaced, graded
Dirt road

U. S. Route 15
State Route 26

More than two lanes indicated along road with tick at point of change

Polyconic projection. 1927 North American datum
5000 yard grid based on U. S. zone system, G
10000 foot grid based on California (1)
rectangular coordinate system

U.S.G.S.
FILE COPY
TOPOGRAPHIC DIVISION

U.S.G.S.
Historical File
Topographic Division

LAMOINE, CALIF.
Edition of 1946

N4045-W12215/15

OCT 19 1955