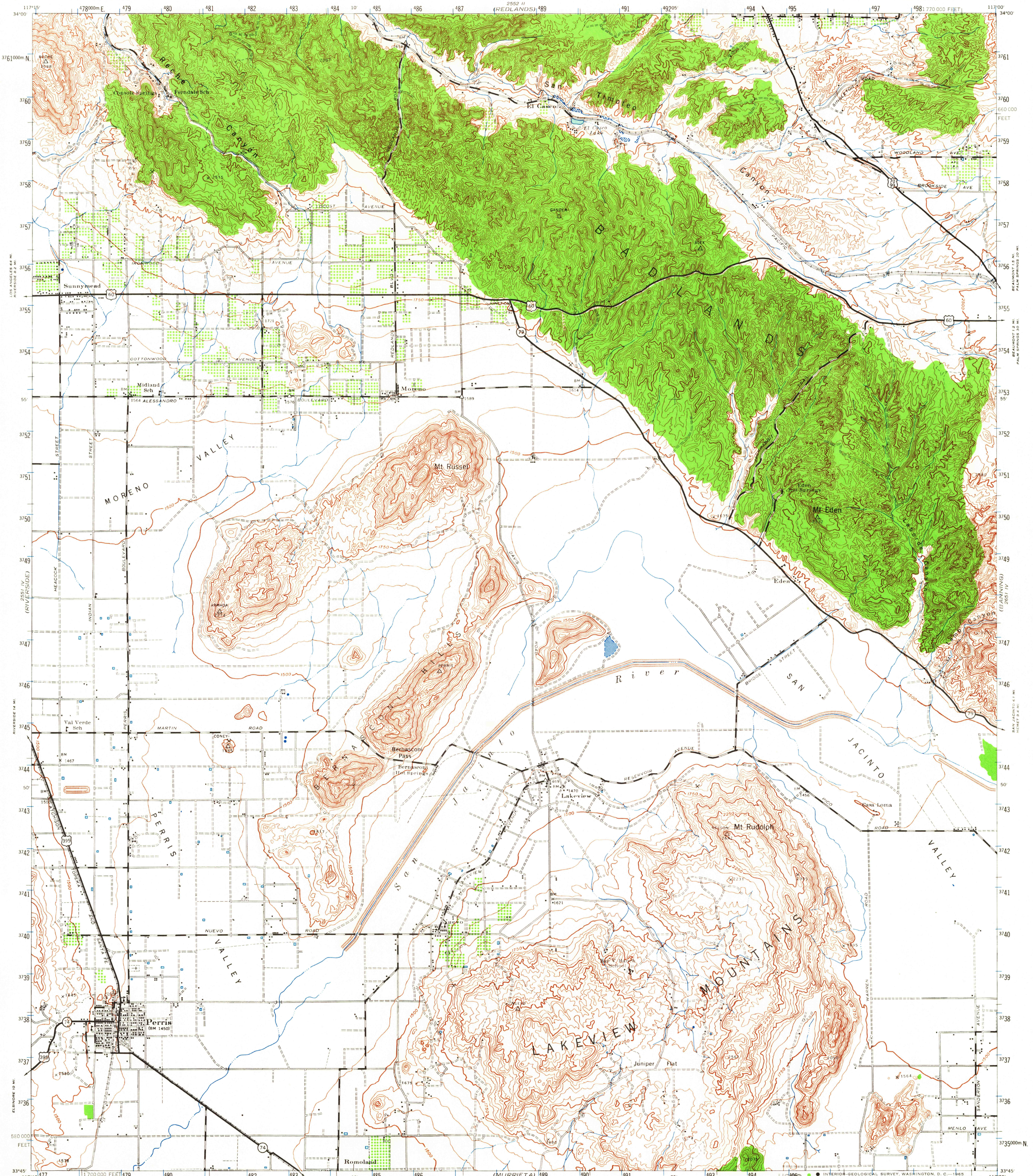


UNITED STATES
DEPARTMENT OF THE ARMY
CORPS OF ENGINEERS

PERRIS QUADRANGLE
CALIFORNIA—RIVERSIDE CO.
15 MINUTE SERIES (TOPOGRAPHIC)



Prepared under the direction of the Chief of Engineers by the Army Map Service (AM), U. S. Army, Washington, D. C. Scale changed, marginal data revised and Universal Transverse Mercator Grid added, 1947. Copied in 1947 from California, 1:62,500, AMS, Perris, 1942. Original map compiled by stereophotogrammetric methods for the Army Map Service by the 29th Engineer Battalion, U. S. Army. Horizontal control by USCGS and the 29th Engineer Battalion, U. S. Army. Vertical control by USCGS, USGS and the 29th Engineer Battalion, U. S. Army. Aerial photography by U. S. Army Air Force, 1939.

LEGEND

ROAD DATA 1942
In developed areas, only through roads are classified

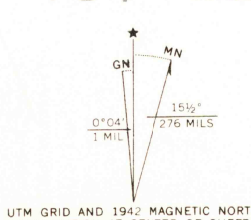
Hard surface, heavy duty road, more than two lanes wide
Hard surface, heavy duty road, two lanes wide
Secondary, hard surface, all-weather road, two lanes wide
Loose surface, graded, dry-weather road
Trail, dirt road
Railroad in street, Carline in street

SCALE 1:62,500
VERTICAL DATUM: SEA LEVEL DATUM OF 1929
TRANSVERSE MERCATOR PROJECTION
HORIZONTAL DATUM: 1927 NORTH AMERICAN DATUM

10,000-FOOT GRID TICKS: CALIFORNIA PLANE COORDINATE SYSTEM, ZONE 6, SHOWN IN BLACK
1000-METER GRID TICKS: UNIVERSAL TRANSVERSE MERCATOR SYSTEM, ZONE 11, SHOWN IN BLUE

REPRINTED FROM MILITARY EDITION FOR CIVIL USE
FOR SALE BY U. S. GEOLOGICAL SURVEY, DENVER 25, COLORADO OR WASHINGTON 25, D. C.
A FOLDER DESCRIBING TOPOGRAPHIC MAPS AND SYMBOLS IS AVAILABLE ON REQUEST

Historical File
Topographic Division



This area also covered by 7.5-minute, 1:24,000-scale maps: El Casco 1953, Sunnymead 1953, Perris 1953, and Lakeview 1953.

PERRIS, CALIF.
N3345-W11700/15

1942

AMS 2551 1—SERIES V795

MAR 17 1965

3185