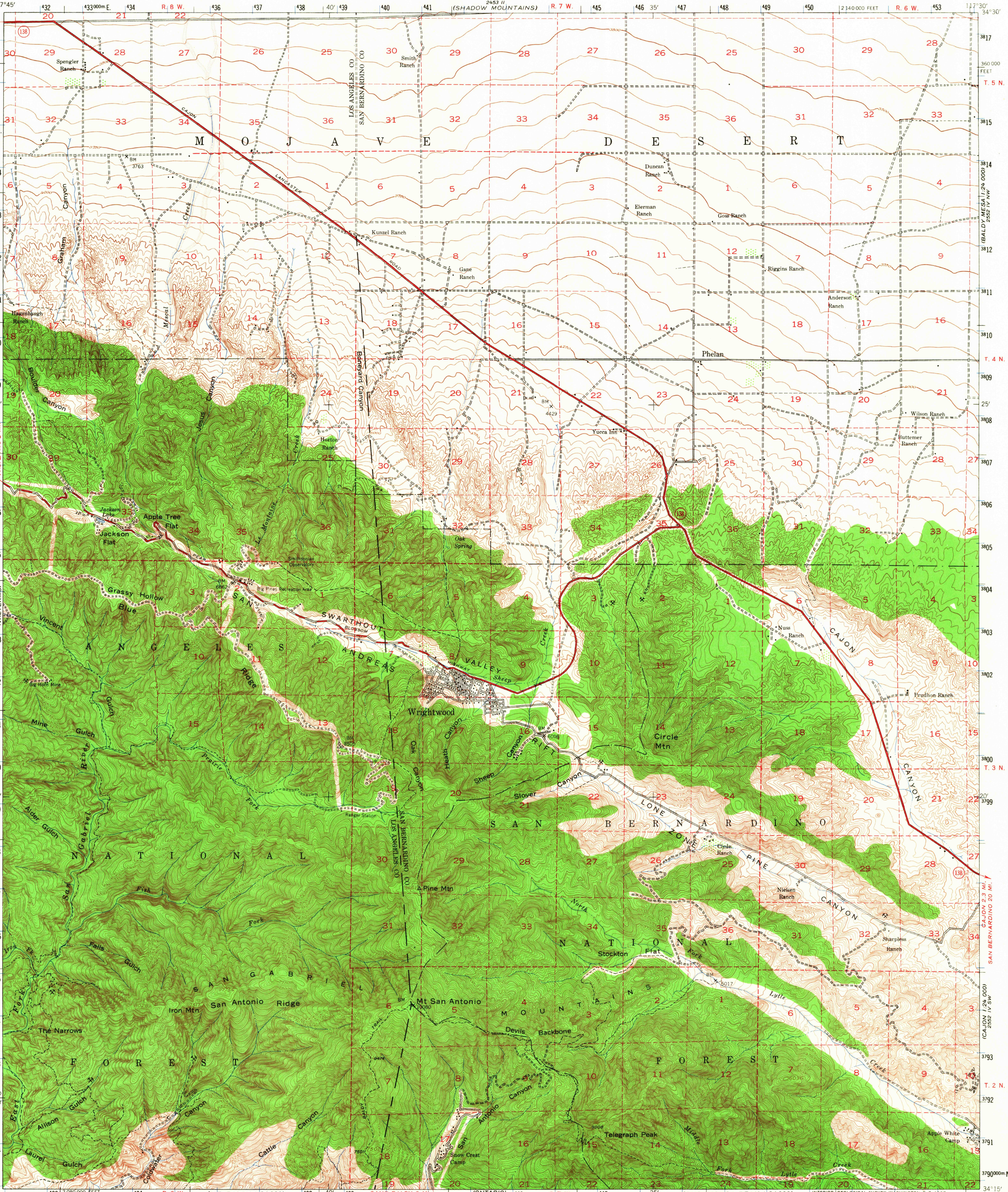


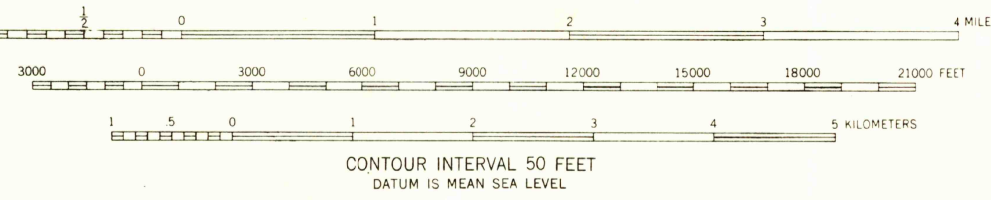
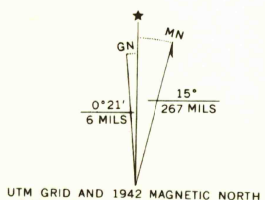
UNITED STATES  
DEPARTMENT OF THE INTERIOR  
GEOLOGICAL SURVEY

UNITED STATES  
DEPARTMENT OF THE ARMY  
CORPS OF ENGINEERS  
(SHADOW MOUNTAINS)

SAN ANTONIO QUADRANGLE  
CALIFORNIA  
15 MINUTE SERIES (TOPOGRAPHIC)



Mapped by the Geological Survey  
Revised by the Army Map Service  
Published for civil use by the Geological Survey  
Control by USGS  
Topography by plane-table methods 1899-1900  
Planimetric detail revised from aerial photographs taken 1941  
Field check 1942  
Polyconic projection. 1927 North American datum  
10,000-foot grid based on California coordinate system, zone 5  
Dashed land lines indicate approximate location  
No distinction is made between dwellings, barns,  
commercial and industrial buildings  
1000-meter Universal Transverse Mercator grid ticks,  
zone 11, shown in blue



USGS  
Historical File  
Topographic Division

USGS  
TOPOGRAPHIC DIVISION

ROAD CLASSIFICATION  
Heavy duty ——— Light duty ———  
Medium duty ——— Unimproved dirt ———  
U.S. Route ——— State Route ———  
This area also covered by 1:24,000 scale maps of Phelan,  
Mesquite Creek, Mt. San Antonio, and Telegraph Peak  
7.5 quadrangles, surveyed in 1956  
SAN ANTONIO, CALIF. 6005  
N3415-W11730/15  
1942  
AMS 2452 I-SERIES V795

FOR SALE BY U. S. GEOLOGICAL SURVEY, DENVER, COLORADO 80225 OR WASHINGTON, D. C. 20242  
A FOLDER DESCRIBING TOPOGRAPHIC MAPS AND SYMBOLS IS AVAILABLE ON REQUEST