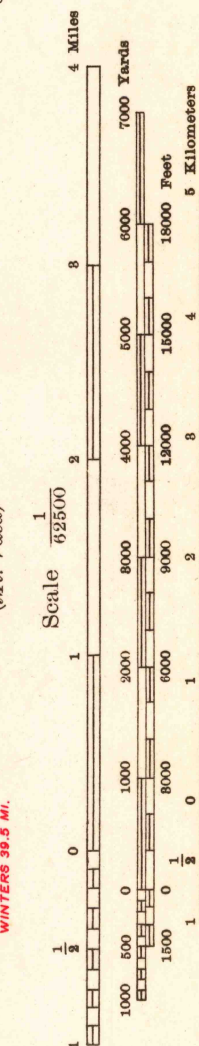
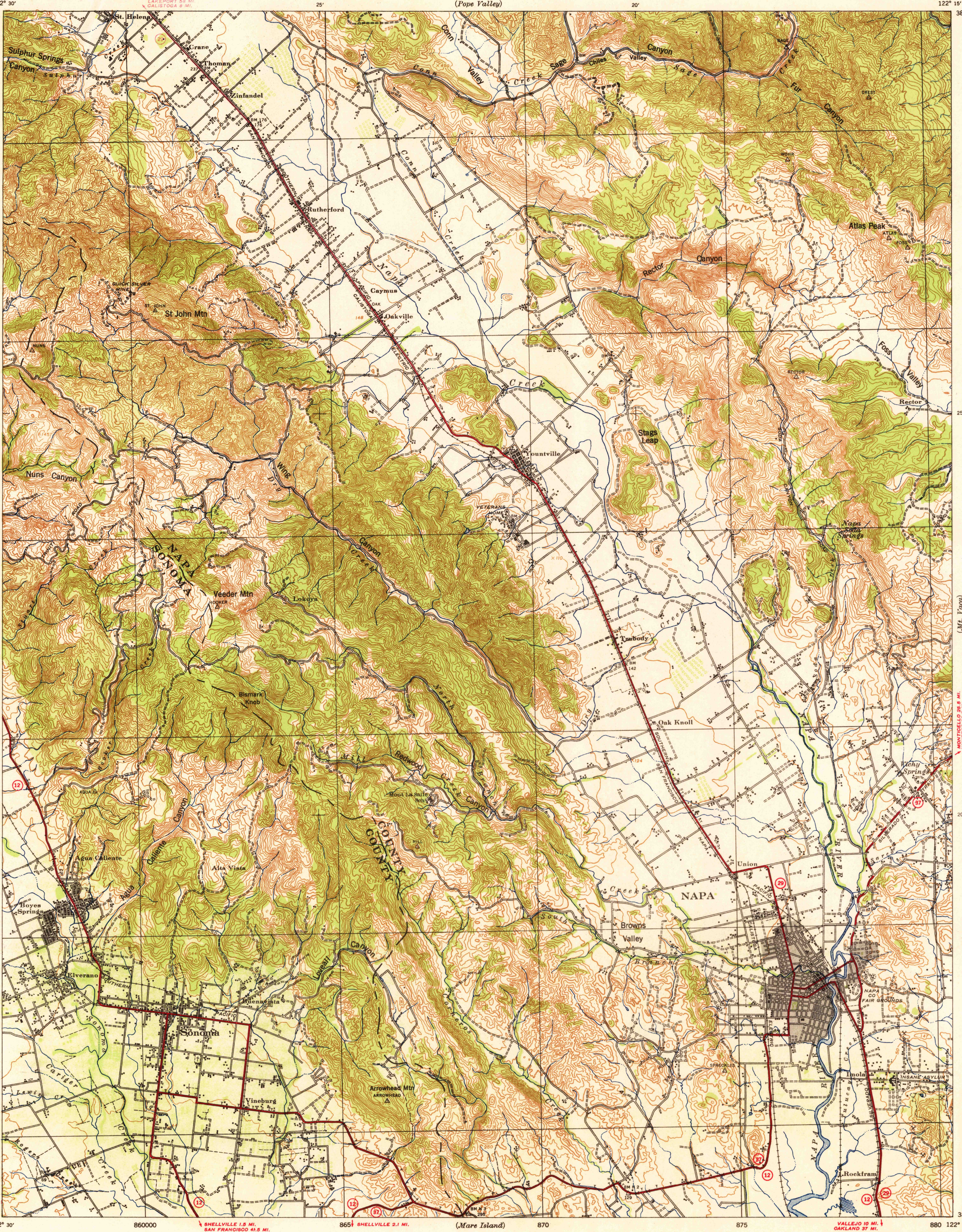


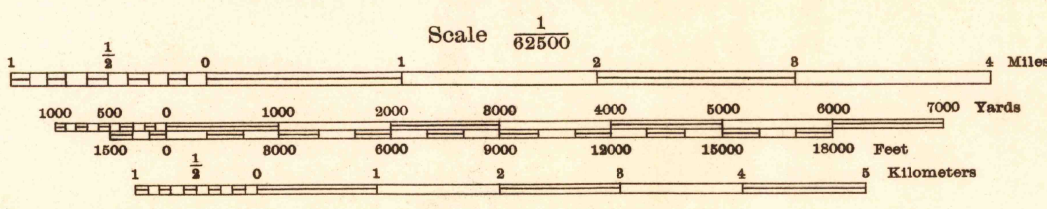
CORPS OF ENGINEERS, U. S. ARMY
TACTICAL MAP

CALIFORNIA
SONOMA QUADRANGLE
GRID ZONE "G"

Advance Sheet
Subject to correction



Prepared under the direction of the Chief of Engineers, U. S. Army, 1941.
Horizontal control by 29th Engineers, U. S. Army, 1939-1940, U. S. Geological Survey, 1899, and U. S. Coast and Geodetic Survey, 1932.
Vertical control by 29th Engineers, U. S. Army, 1939-1940, U. S. Geological Survey, 1940, and U. S. Coast and Geodetic Survey, 1932.
Topography by 29th Engineers, U. S. Army, 1941, utilizing multiplex areo-projectors from T-3A (five lens) aerial photographs.
Photography by 91st Observation Squadron, Air Corps, U. S. Army, 1939.
Polyconic Projection, North American 1927 Datum.



Contour Interval 50 feet
Datum is mean sea level (1929 Adj.)
FIVE THOUSAND YARD GRID COMPUTED FROM "GRID SYSTEM FOR PROGRESSIVE MAPS IN THE U. S. ZONE G, U. S. C. & S. SPECIAL PUBLICATION NO. 59 (THE LAST THREE DIGITS OF THE GRID NUMBERS ARE OMITTED)"
NOTE: OFFICERS USING THIS MAP WILL MARK REVISION CORRECTIONS AND ADDITIONS WHICH COME TO THEIR ATTENTION AND MAIL DIRECT TO: THE CHIEF OF ENGINEERS, WASHINGTON, D. C.

USCS
Historical File
Topographic Division

29TH ENGINEER BATTALION REPRODUCTION PLANT, PORTLAND, OREG.
1942
ROUTES USUALLY TRAVELED
HARD IMPERVIOUS SURFACES
OTHER SURFACE IMPROVEMENTS
U. S. ROUTE
STATE ROUTE

SONOMA, CALIF.
N3815-W12215/15