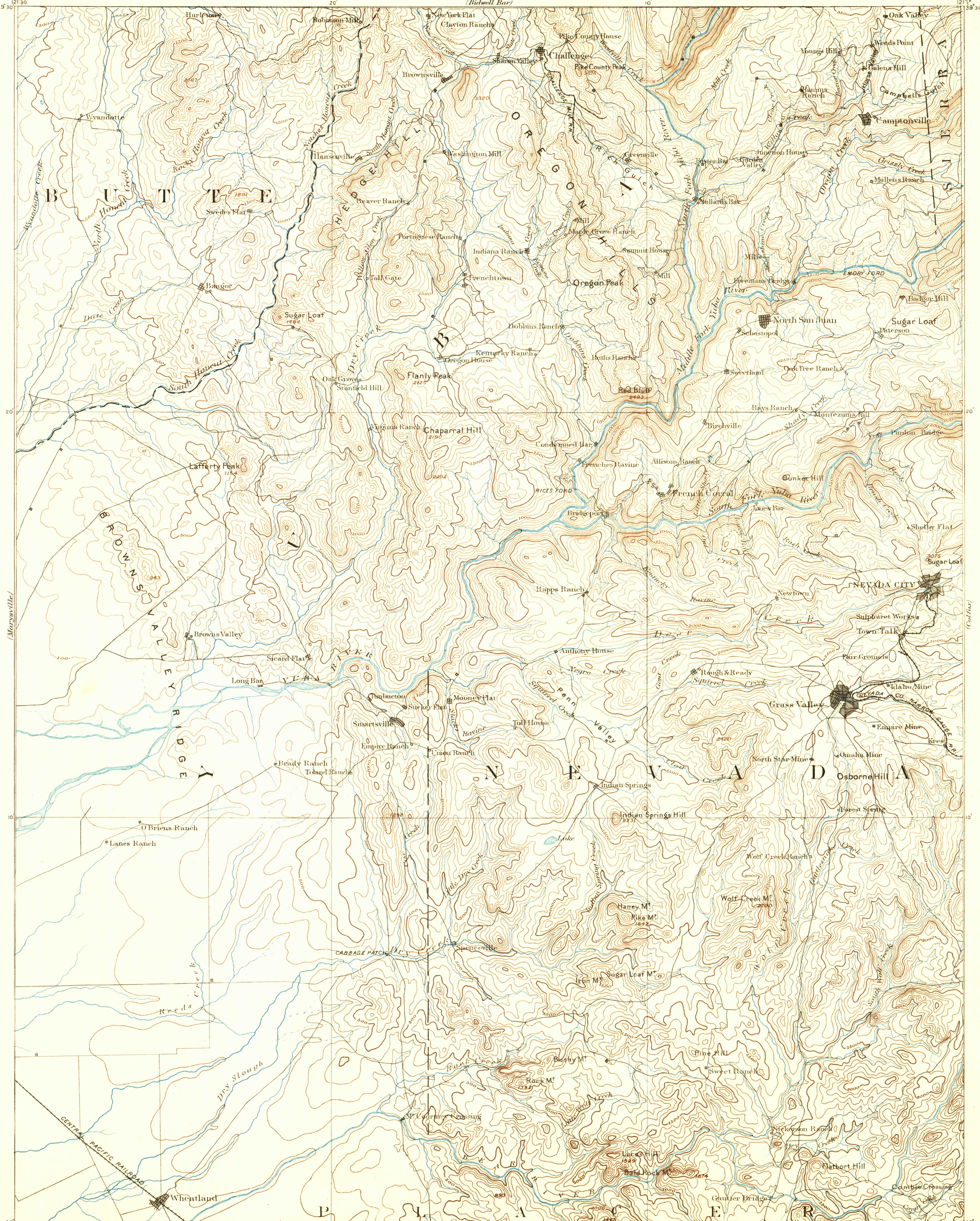


U. S. G. S.  
FILE COPY  
Editor of Topographic Maps.

U. S. GEOLOGICAL SURVEY.  
J.W. POWELL, DIRECTOR.

CALIFORNIA  
SMARTSVILLE SHEET.



Henry Gannett, Chief Geographer.  
A.H. Thompson, Geographer in charge.  
Triangulation by H.M. Wilson.  
Topography by H.M. Wilson and A.F. Dunnington.  
Surveyed in 1885 and 1886.

1885
H.M. Wilson
1886
A.F. Dunnington

Scale 125,000  
Contour Interval 100 feet

USGS  
Historical File  
Topographic Division

Edition of Sept. 1894.

(600)

Smartsville