

7 459 1/2 S.E.
(7 459 1/2 S.E.)

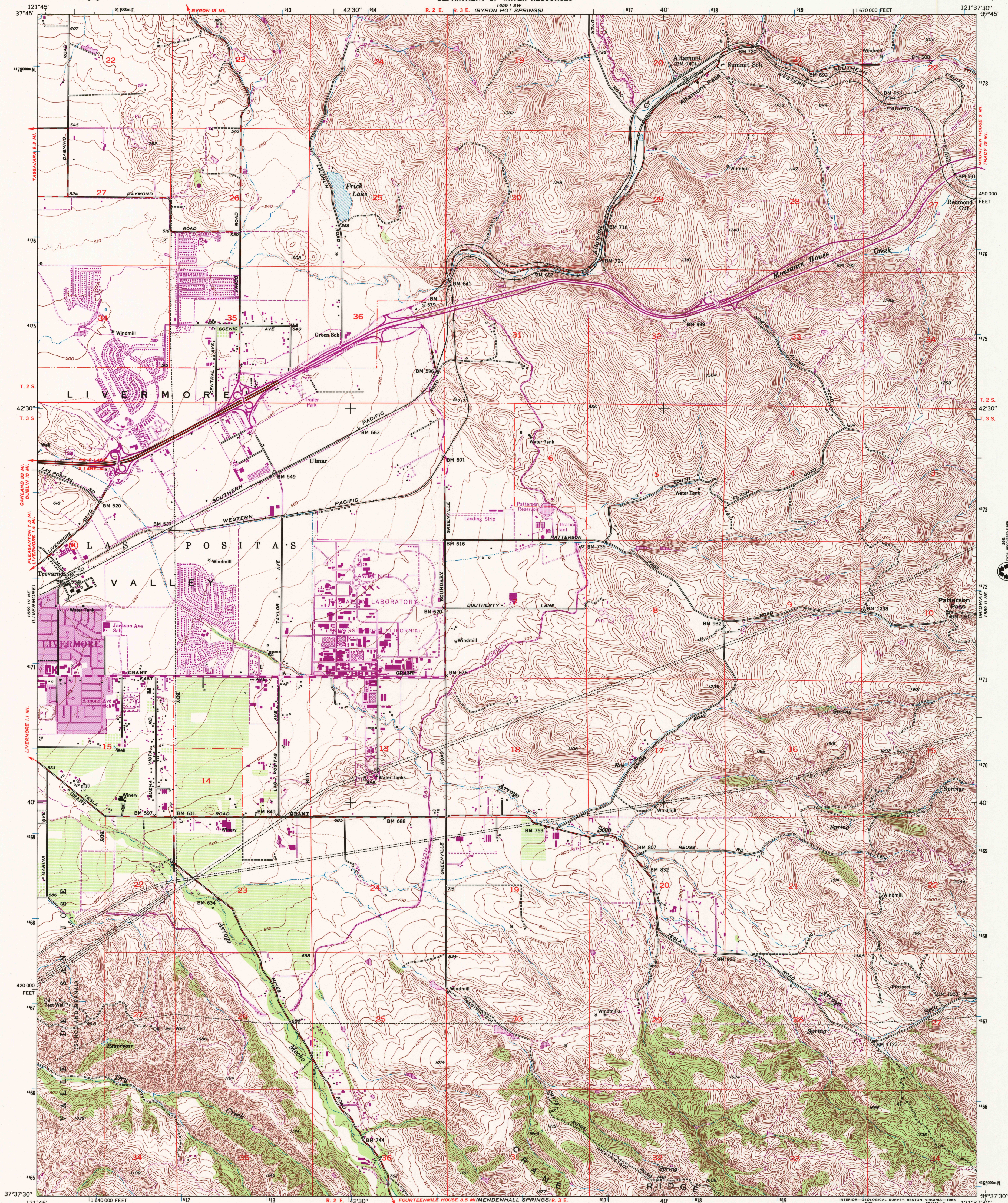


U.S. DEPARTMENT OF THE INTERIOR
U.S. GEOLOGICAL SURVEY

STATE OF CALIFORNIA
DEPARTMENT OF WATER RESOURCES

ALTAMONT QUADRANGLE
CALIFORNIA—ALAMEDA CO.
7.5 MINUTE SERIES (TOPOGRAPHIC)

7 459 1/2 S.E.
(7 459 1/2 S.E.)



LA COSTA VALLEY
1659 1/2 S.E.

Mapped, edited, and published by the Geological Survey

Control by USGS, NOS/NOAA, USCE, and Alameda Co

Topography by photogrammetric methods from aerial photographs taken 1949 and planetable surveys 1953

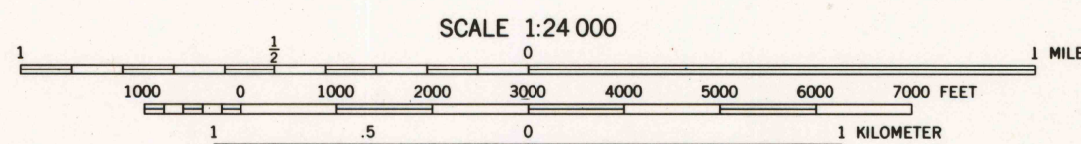
Polyconic projection. 10,000-foot grid based on California coordinate system, zone 3. 1000-meter Universal Transverse Mercator grid ticks, zone 10, shown in blue. 1927 North American Datum

To place on the predicted North American Datum 1983 move the projection lines 13 meters north and 93 meters east as shown by dashed corner ticks

There may be private inholdings within the boundaries of the National or State reservations shown on this map

UTM GRID AND 1981 MAGNETIC NORTH DECLINATION AT CENTER OF SHEET

Revisions shown in purple and woodland compiled from aerial photographs taken 1978 and other sources. This information not field checked. Map edited 1981. Purple tint indicates extension of urban areas



CONTOUR INTERVAL 20 FEET
DASHED LINES REPRESENT HALF-INTERVAL CONTOURS
NATIONAL GEODETIC VERTICAL DATUM OF 1929

THIS MAP COMPLIES WITH NATIONAL MAP ACCURACY STANDARDS
FOR SALE BY U.S. GEOLOGICAL SURVEY, P.O. BOX 25286, DENVER, COLORADO 80225
A FOLDER DESCRIBING TOPOGRAPHIC MAPS AND SYMBOLS IS AVAILABLE ON REQUEST



QUADRANGLE LOCATION

ROAD CLASSIFICATION
Heavy-duty ——— Light-duty ———
Medium-duty ——— Unimproved dirt ———
Interstate Route U.S. Route State Route

ALTAMONT, CALIF.

37121-F6-TF-024

1953
PHOTOREVISED 1981
DMA 1659 1/2 N—SERIES V895

7 459 1/2 S.E.
(7 459 1/2 S.E.)

9 780607 1082463