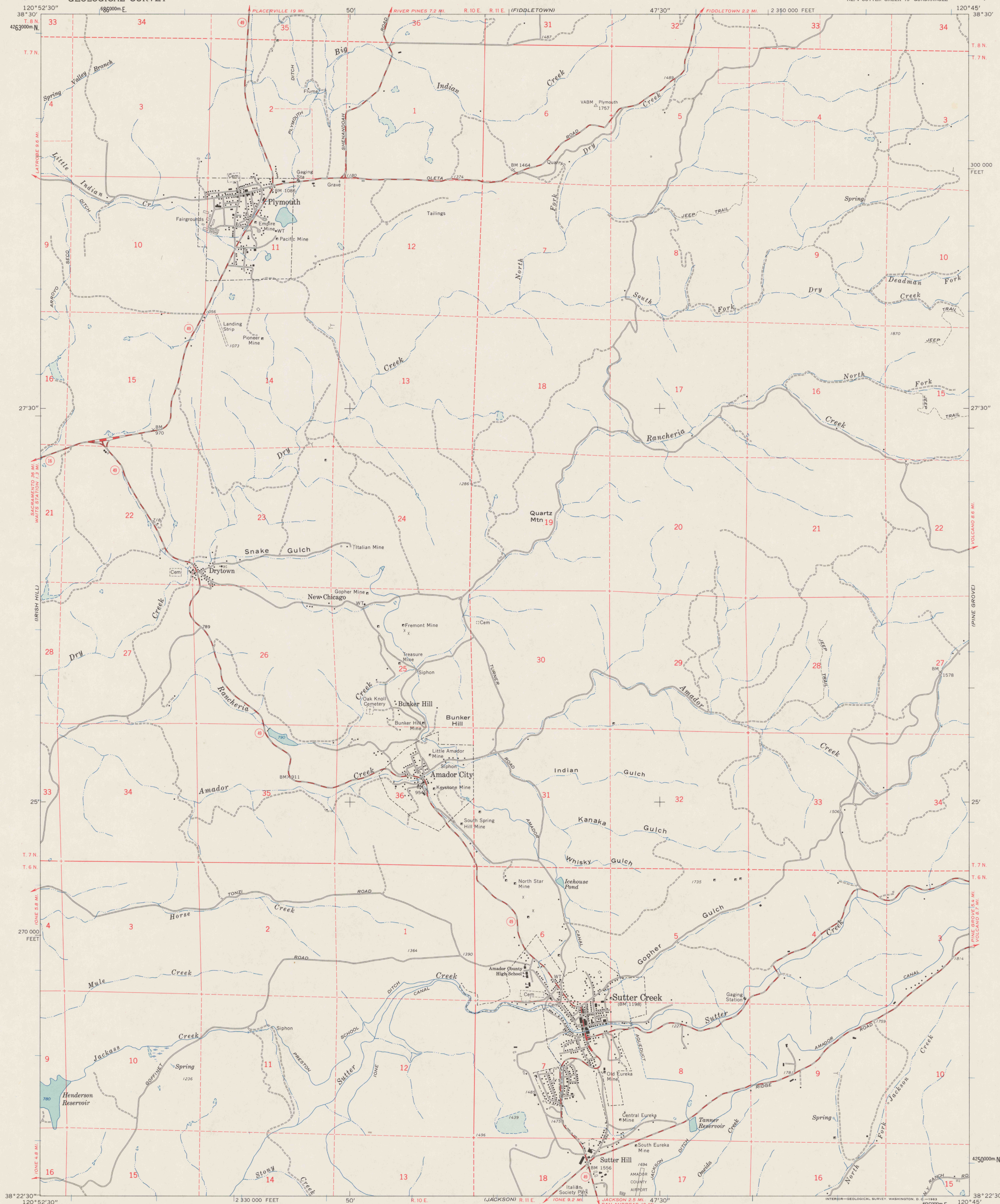


UNITED STATES
DEPARTMENT OF THE INTERIOR
GEOLOGICAL SURVEY

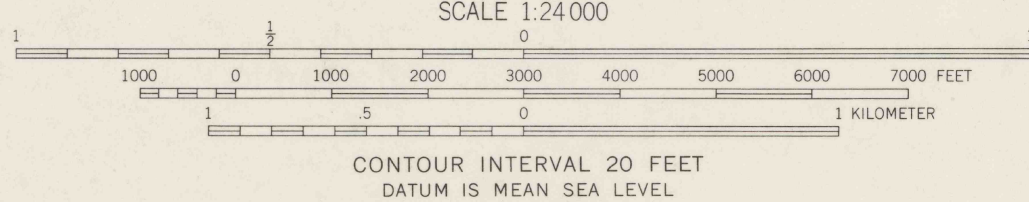
AMADOR CITY QUADRANGLE
CALIFORNIA—AMADOR CO.
7.5 MINUTE SERIES (TOPOGRAPHIC)
NE/4 SUTTER CREEK 15' QUADRANGLE



Mapped, edited, and published by the Geological Survey
in cooperation with California Department of Water Resources

Control by USGS and USC&GS
Topography by photogrammetric methods from aerial
photographs taken 1959. Field checked 1962
Polyconic projection. 1927 North American datum
10,000-foot grid based on California coordinate system, zone 2
1000-meter Universal Transverse Mercator grid ticks,
zone 10, shown in blue
Fine red dashed lines indicate selected fence lines

TRUE NORTH
MAGNETIC NORTH
APPROXIMATE MEAN
DECLINATION, 1962



THIS MAP COMPLIES WITH NATIONAL MAP ACCURACY STANDARDS
FOR SALE BY U.S. GEOLOGICAL SURVEY, DENVER 25, COLORADO OR WASHINGTON 25, D. C.
A FOLDER DESCRIBING TOPOGRAPHIC MAPS AND SYMBOLS IS AVAILABLE ON REQUEST



ROAD CLASSIFICATION
Medium-duty ——— Light-duty ———
Unimproved dirt ———
State Route ———

REFERENCE

AMADOR CITY, CALIF.
NE/4 SUTTER CREEK 15' QUADRANGLE
N3822.5—W12045/7.5

1962

DO NOT CIRCULATE

This edition is a partial printing of the standard topographic
quadrangle map. Contours and woodland areas are omitted.

REF
B7000
Var
U5
7.5
ed. 1002
rep. 1983 pp