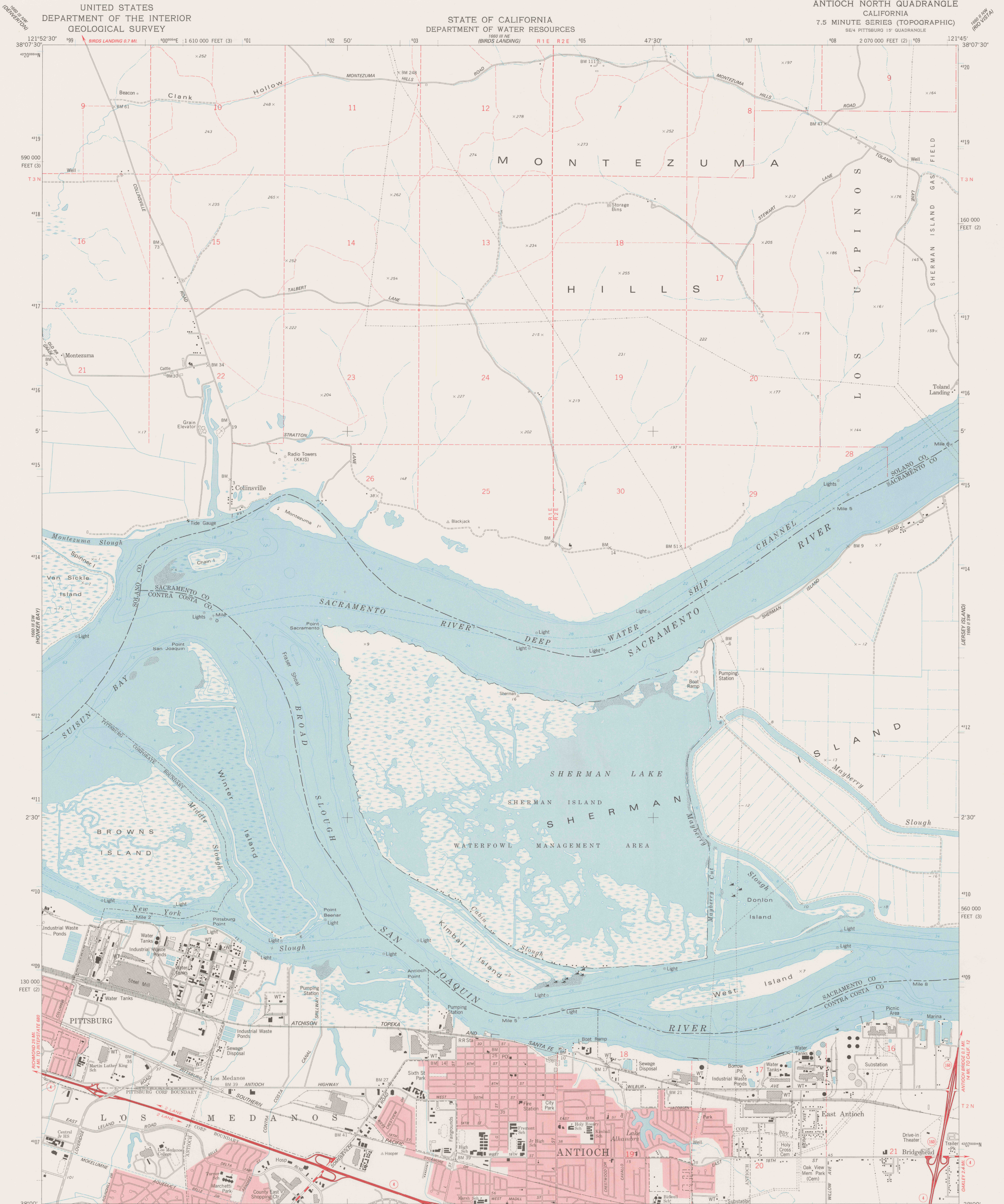


UNITED STATES  
DEPARTMENT OF THE INTERIOR  
GEOLOGICAL SURVEY

STATE OF CALIFORNIA  
DEPARTMENT OF WATER RESOURCES

ANTIOCH NORTH QUADRANGLE  
CALIFORNIA  
7.5 MINUTE SERIES (TOPOGRAPHIC)  
SE/4 PITTSBURG 15' QUADRANGLE



Mapped, edited, and published by the Geological Survey  
Control by USGS, NOS/NOAA, and State of California  
Topography by photogrammetric methods from aerial photographs  
taken 1974 and planetable surveys 1976. Map edited 1978  
Supersedes map dated 1953

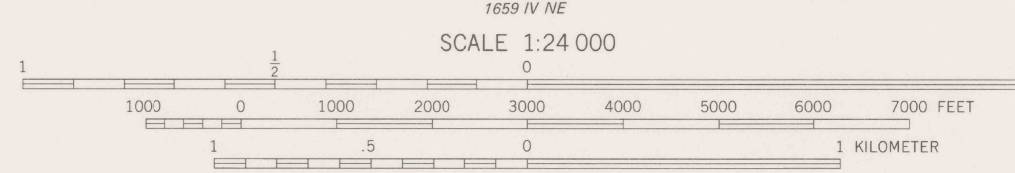
Selected hydrographic data compiled from NOS/NOAA Charts 18656 and 18661 (1976)  
This information is not intended for navigational purposes

Projection: California coordinate system, zone 2 (Lambert conformal conic)  
10,000-foot grid ticks based on California coordinate system, zone 2 and 3  
1000-meter Universal Transverse Mercator grid ticks,  
zone 10, shown in blue. 1927 North American datum

Red tint indicate areas in which only landmark buildings are shown

Fine red dashed lines indicate selected fence and field lines where  
generally visible on aerial photographs. This information is unchecked

This map lies within a subsidence area  
Vertical control based on latest available adjustment



ROAD CLASSIFICATION  
Primary highway, hard surface  
Secondary highway, hard surface  
Unimproved road  
Interstate Route  
U. S. Route  
State Route

FOR EARLIEST  
EDITION OF  
THIS MAP SEE  
3052.C48 31.U5:  
Collinsville

ANTIOCH NORTH, CALIF.  
SE/4 PITTSBURG 15' QUADRANGLE  
N3800-W12145/7.5  
1978  
AMS 1060 III SE-SERIES V895

REFERENCE  
REF  
B700a  
Var  
U5