

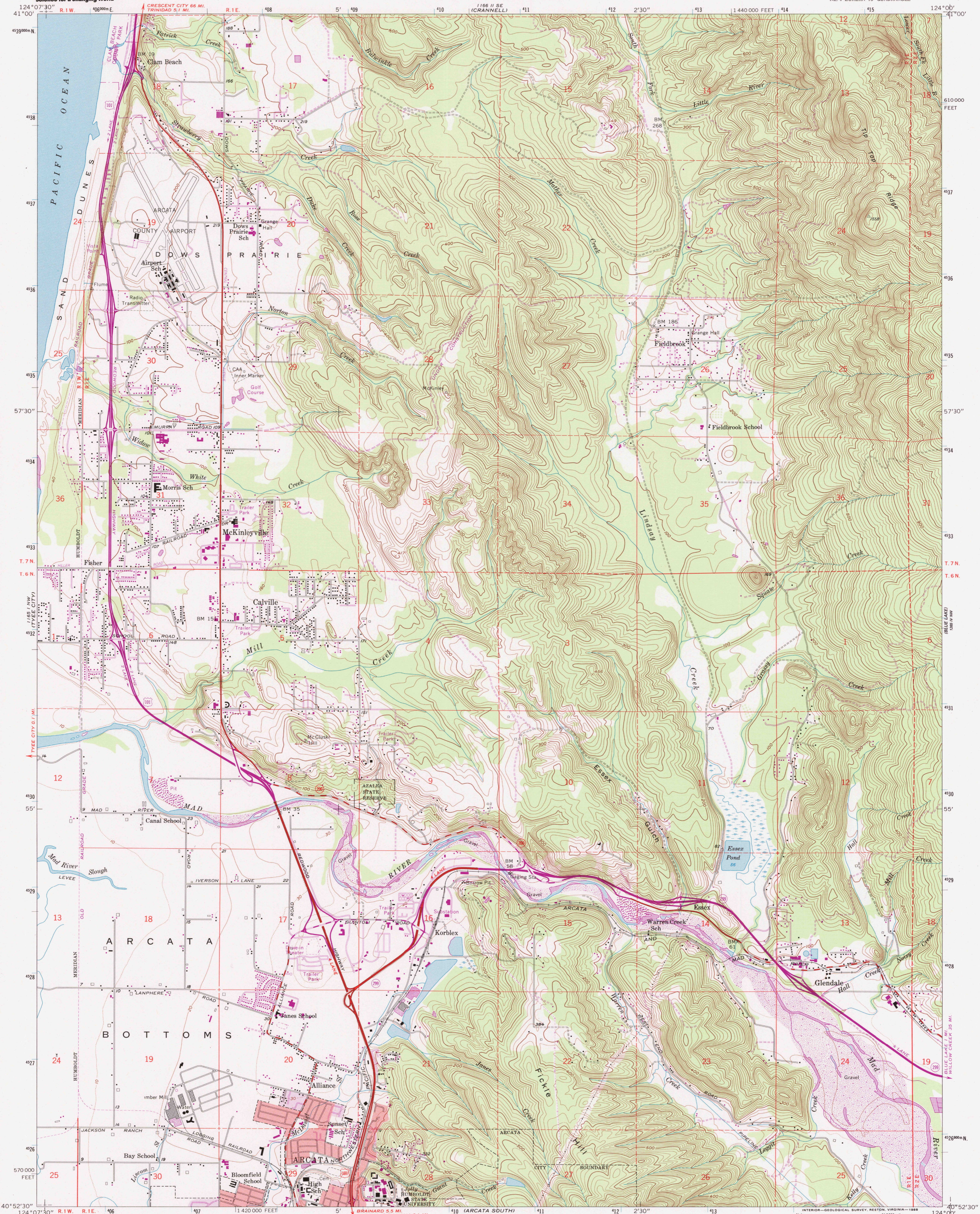


U.S. DEPARTMENT OF THE INTERIOR
U.S. GEOLOGICAL SURVEY

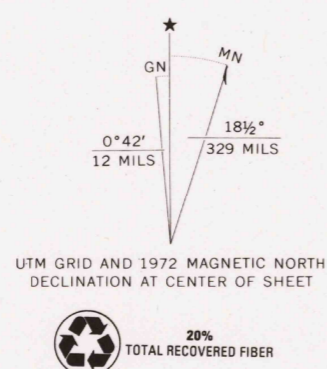
STATE OF CALIFORNIA
DEPARTMENT OF WATER RESOURCES

ARCATA NORTH QUADRANGLE
CALIFORNIA—HUMBOLDT CO.
7.5 MINUTE SERIES (TOPOGRAPHIC)
NE/4 EUREKA 15' QUADRANGLE

124° 07' 30" W
41° 00' N



Mapped, edited, and published by the Geological Survey
Control by USGS and USC&GS
Topography from aerial photographs by photogrammetric methods
and by planimetric surveys 1959. Aerial photographs taken 1956
Polyconic projection. 1927 North American datum
10,000-foot grid based on California coordinate system, zone 1
1000-meter Universal Transverse Mercator grid ticks,
zone 10, shown in blue
To place on the predicted North American Datum 1983
move the projection lines 20 meters north and
97 meters east as shown by dashed corner ticks
Red tint indicates area in which only landmark buildings are shown



SCALE 1:24,000
CONTOUR INTERVAL 20 FEET
DOTTED LINES REPRESENT 10-FOOT CONTOURS
DATUM IS MEAN SEA LEVEL
SHORELINE SHOWN REPRESENTS THE APPROXIMATE LINE OF MEAN HIGH WATER
THE MEAN RANGE OF TIDE IS APPROXIMATELY 4 FEET

THIS MAP COMPLIES WITH NATIONAL MAP ACCURACY STANDARDS
FOR SALE BY U.S. GEOLOGICAL SURVEY, P.O. BOX 25286, DENVER, COLORADO 80225
A FOLDER DESCRIBING TOPOGRAPHIC MAPS AND SYMBOLS IS AVAILABLE ON REQUEST

Revisions shown in purple compiled from aerial photographs
taken 1970. This information not field checked
Purple tint indicates extension of urban areas

ROAD CLASSIFICATION
Heavy-duty ——— Light-duty ———
Medium-duty ——— Unimproved dirt ———
U.S. Route ——— State Route ———
ARCATA NORTH, CALIF.
NE/4 EUREKA 15' QUADRANGLE
40124-HI-TF-024
1959
PHOTOGRAPHED 1972
DMA 1165 I NE—SERIES V895

