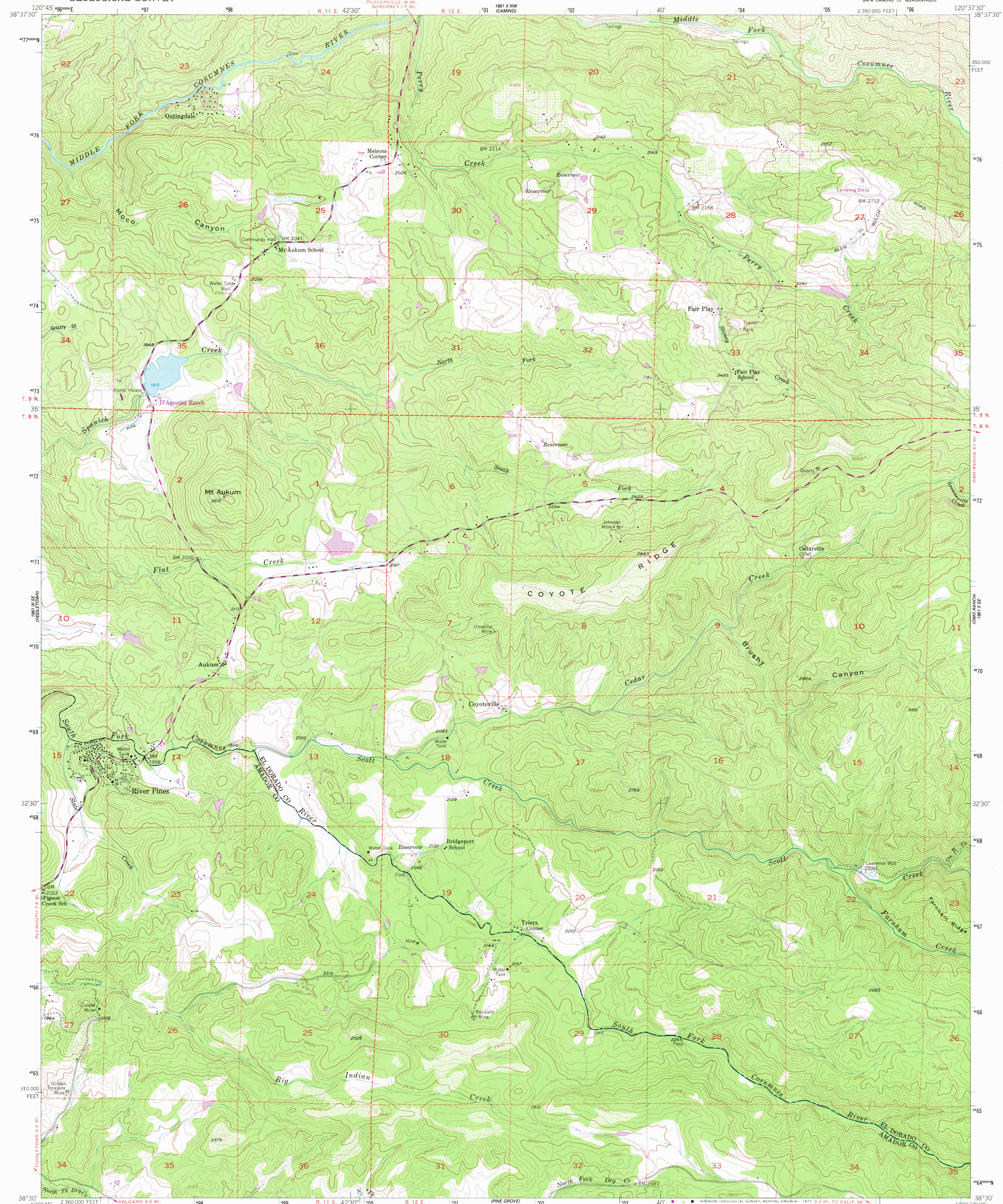


UNITED STATES
DEPARTMENT OF THE INTERIOR
GEOLOGICAL SURVEY

AUKUM QUADRANGLE
CALIFORNIA
7.5 MINUTE SERIES (TOPOGRAPHIC)
SW 1/4 CAMINO 15' QUADRANGLE



Mapped, edited, and published by the Geological Survey

Control by USGS

Topography from aerial photographs by multiplex methods

Aerial photographs taken 1948. Field check 1952

Polyconic projection. 1927 North American datum

10,000-foot grid based on California coordinate system, zone 2

Dashed land lines indicate approximate locations

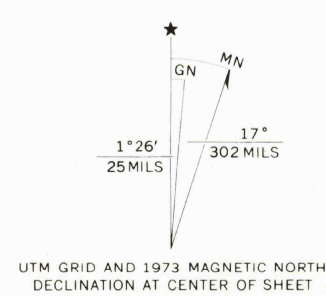
Unchecked elevations are shown in brown

1000-meter Universal Transverse Mercator grid ticks,

zone 10, shown in blue

Revisions shown in purple compiled from aerial photographs

taken 1973. This information not field checked



SCALE 1:24,000

1000 0 1000 2000 3000 4000 5000 6000 7000 FEET

1 5 10 KILOMETER

CONTOUR INTERVAL 40 FEET

NATIONAL GEODETIC VERTICAL DATUM OF 1929

THIS MAP COMPLIES WITH NATIONAL MAP ACCURACY STANDARDS

FOR SALE BY U. S. GEOLOGICAL SURVEY, DENVER, COLORADO 80225, OR RESTON, VIRGINIA 22092

A FOLDER DESCRIBING TOPOGRAPHIC MAPS AND SYMBOLS IS AVAILABLE ON REQUEST



QUADRANGLE LOCATION

ROAD CLASSIFICATION

Medium-duty ——— Light-duty ———

Unimproved dirt ———

AUKUM, CALIF.

SW 1/4 CAMINO 15' QUADRANGLE

N3830—W12037.5/7.5

1952

PHOTOREVISED 1973

AMS 1861 II SW—SERIES V895