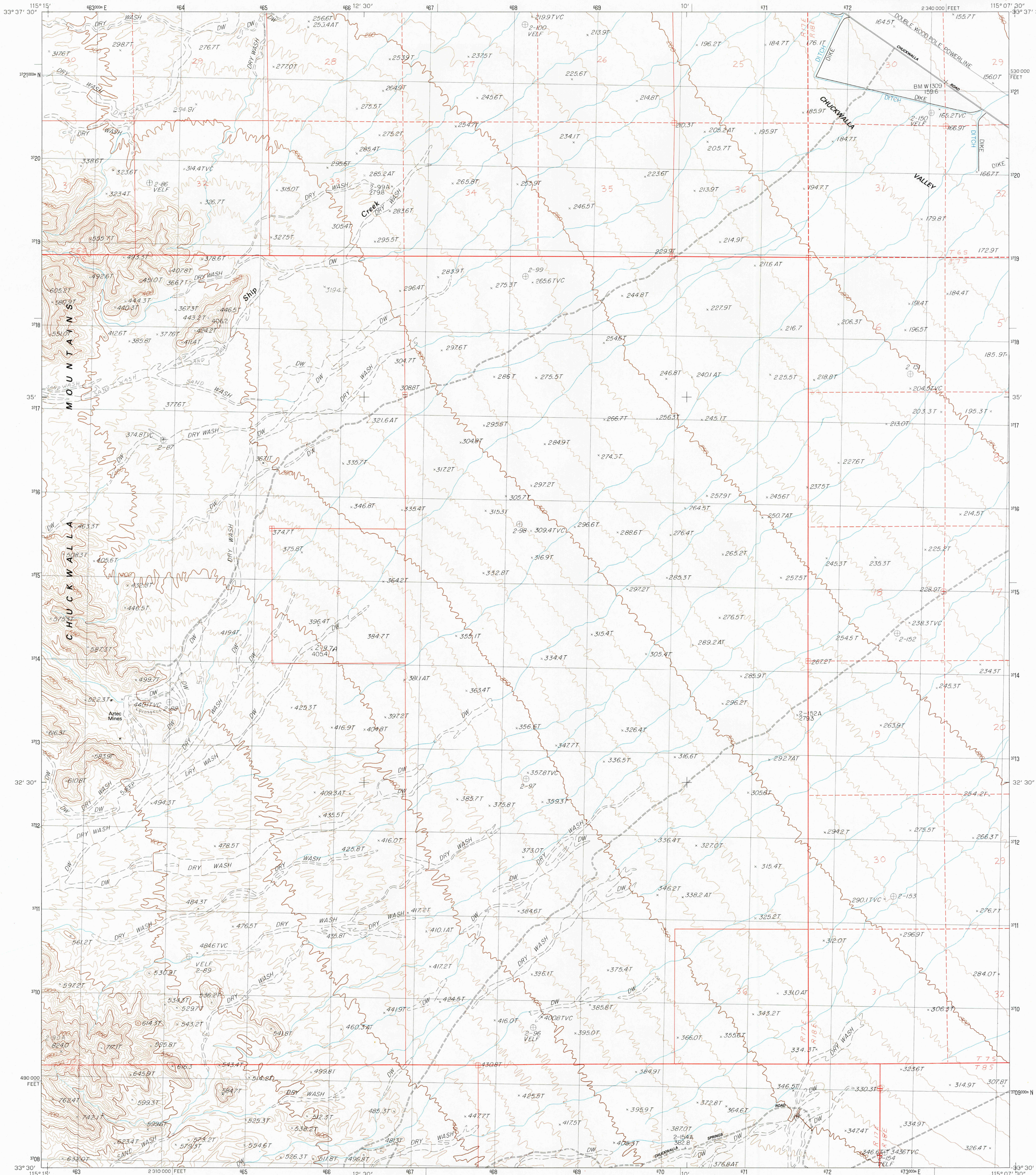


UNITED STATES
DEPARTMENT OF THE INTERIOR
GEOLOGICAL SURVEY

AZTEC MINES QUADRANGLE
CALIFORNIA—RIVERSIDE CO.
7.5 MINUTE SERIES (TOPOGRAPHIC)



PRODUCED BY THE UNITED STATES GEOLOGICAL SURVEY
CONTROL BY U.S.G.S. NOS. 1000000
COMPILED FROM AERIAL PHOTOGRAPHS TAKEN 1977
FIELD CHECKED 1978 MAP EDITED 1983
PROJECTION UNIVERSAL TRANSVERSE MERCATOR
GRID: 1000-METER UNIVERSAL TRANSVERSE MERCATOR, ZONE 11
10,000-FOOT STATE GRID TICS CALIFORNIA, ZONE 6
UTM GRID DECLINATION 1900 EAST
1980 MAGNETIC NORTH DECLINATION 1330 EAST
VERTICAL DATUM: NATIONAL GEODETIC DATUM OF 1929
HORIZONTAL DATUM: 1927 NORTH AMERICAN DATUM
To place on the predicted North American Datum of 1983,
move the projection lines as shown by dashed corner ticks
(2 meters south / 75 meters east)
There may be private inholdings within the boundaries of any
Federal and State Reservations shown on this map
Where omitted, land lines have not been established

PROVISIONAL MAP
Produced from original
manuscript drawings. Infor-
mation shown as of date of
field check.

SCALE 1:24 000
1 000 0 1000 2000 3000 4000 5000 6000 7000 8000 9000 10 000
KILOMETERS
METERS
MILES
FEET
CONTOUR INTERVAL 10 METERS
ALL ELEVATIONS SHOWN TO THE NEAREST 0.1 METER
To convert meters to feet multiply by 3.2808
To convert feet to meters multiply by 0.3048
THIS MAP COMPLIES WITH NATIONAL MAP ACCURACY STANDARDS
FOR SALE BY U. S. GEOLOGICAL SURVEY, DENVER, COLORADO 80225, OR RESTON, VIRGINIA 22092

QUADRANGLE LOCATION
CALIF.
ADJOINING 7.5 QUADRANGLE NAMES
1 2 3 4 5 6 7 8
1 Corn Spring
2 Sidewinder Well
3 Ford Dry Lake
4 Pilot Mtn.
5 East of Aztec Mines
6 Augustine Pass
7 Chuckwalla Spring
8 Little Chuckwalla Mts.
ROAD LEGEND
Improved Road.....
Unimproved Road.....
Trail.....
Interstate Route U.S. Route State Route
AZTEC MINES, CALIF.
PROVISIONAL EDITION 1983
33115-E2-TM-024