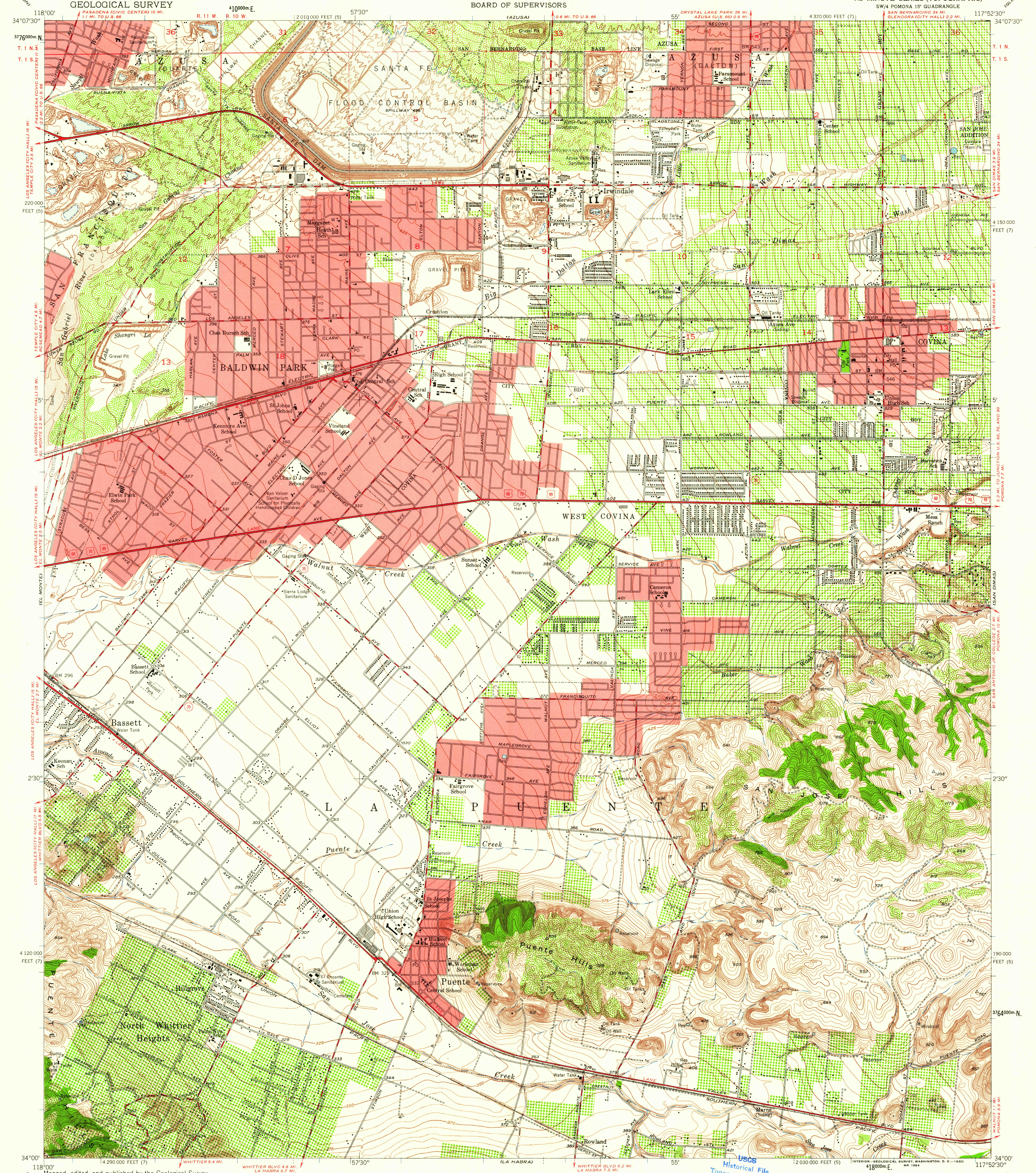


UNITED STATES
DEPARTMENT OF THE INTERIOR
GEOLOGICAL SURVEY

LOS ANGELES COUNTY
BOARD OF SUPERVISORS

BALDWIN PARK QUADRANGLE
CALIFORNIA—LOS ANGELES CO.
7.5 MINUTE SERIES (TOPOGRAPHIC)
SW/4 POMONA 19' QUADRANGLE



Maped, edited, and published by the Geological Survey
Control by USGS and USC&GS
Topography by plane-table surveys 1924, 1925, and 1933
Culture revised from aerial photographs taken 1952. Field check 1953
Polyconic projection. 1927 North American datum
10,000-foot grids based on California coordinate system,
zones 5 and 7
Red tint indicates areas in which only landmark buildings are shown
Dotted land lines were established by private survey
1000-meter Universal Transverse Mercator grid ticks,
zone 11, shown in blue

TRUE NORTH
MAGNETIC NORTH
APPROXIMATE MEAN
DECLINATION, 1953

SCALE 1:24,000
1 0 1000 2000 3000 4000 5000 6000 7000 FEET
1 KILOMETER
CONTOUR INTERVALS 5 AND 25 FEET
DATUM IS MEAN SEA LEVEL

5 FOOT
CONTOURS
25

QUADRANGLE LOCATION
CALIF.

USGS
FILE COPY
TOPOGRAPHIC DIVISION

BALDWIN PARK, CALIF.
SW/4 POMONA 19' QUADRANGLE
N 3400—W 11752.5/7.5
1953

FOR SALE BY U. S. GEOLOGICAL SURVEY, DENVER 25, COLORADO OR WASHINGTON 25, D. C.
A FOLDER DESCRIBING TOPOGRAPHIC MAPS AND SYMBOLS IS AVAILABLE ON REQUEST