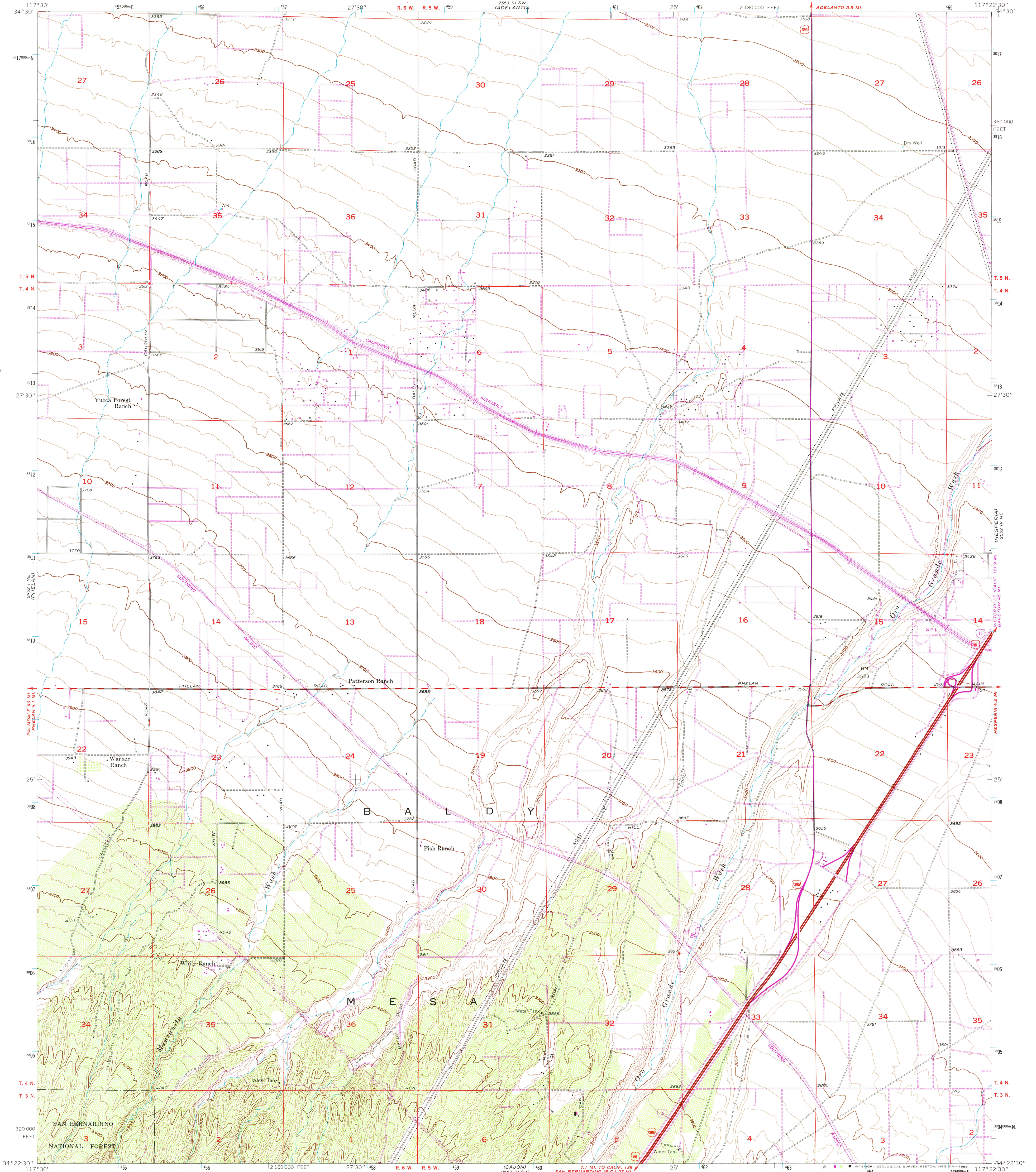


UNITED STATES  
DEPARTMENT OF THE INTERIOR  
GEOLOGICAL SURVEY

BALDY MESA QUADRANGLE  
CALIFORNIA—SAN BERNARDINO CO.  
7.5 MINUTE SERIES (TOPOGRAPHIC)



Mapped, edited, and published by the Geological Survey

Control by USGS, USC&GS, and USCE

Topography from aerial photographs by Kelsh plotter

Aerial photographs taken 1952. Field check 1956

Polyconic projection

10,000-foot grid based on California coordinate system, zone 5

1000-meter Universal Transverse Mercator grid ticks,

zone 10, shown in blue 1927 North American Datum

To place on the predicted North American Datum 1983

move the projection lines 3 meters north and

83 meters east as shown by dashed corner ticks

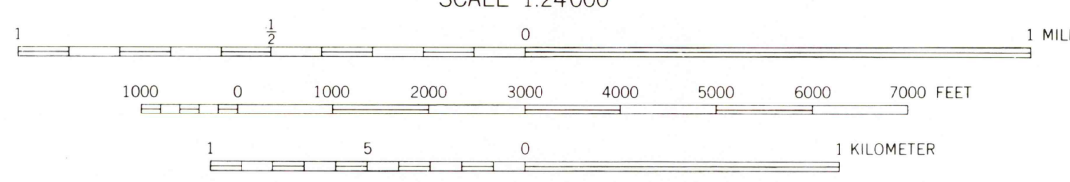
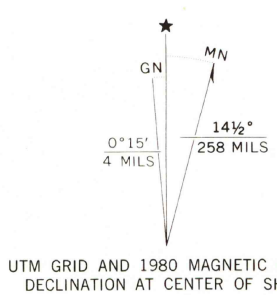
There may be private inholdings within the boundaries

of the National or State reservations shown on this map

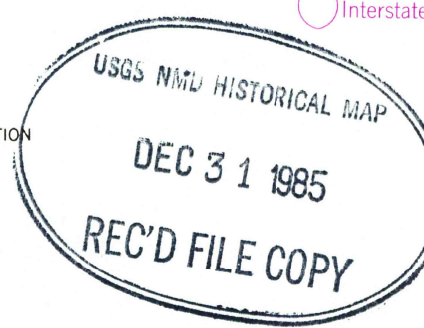
Revisions shown in purple and woodland compiled from

aerial photographs taken 1978 and other source data

This information not field checked. Map edited 1980



THIS MAP COMPLIES WITH NATIONAL MAP ACCURACY STANDARDS  
FOR SALE BY U. S. GEOLOGICAL SURVEY, DENVER, COLORADO 80225, OR RESTON, VIRGINIA 22092  
A FOLDER DESCRIBING TOPOGRAPHIC MAPS AND SYMBOLS IS AVAILABLE ON REQUEST



ROAD CLASSIFICATION  
Heavy-duty ——— Light-duty ———  
Medium-duty ——— Unimproved dirt ———  
Interstate Route ——— U.S. Route ———

BALDY MESA, CALIF.  
34117-D4-TF-024

1956  
PHOTOREVISED 1980  
DMA 2552 IV NW—SERIES V895